



Approved consolidated baseline methodology ACM0010

“Consolidated baseline methodology for GHG emission reductions from manure management systems”

Source

This consolidated baseline methodology is based on elements from the following methodologies:

- AM0006: “GHG emission reductions from manure management systems”, based on the CDM-PDD “Methane capture and combustion of swine manure treatment for Peralillo” whose baseline study, monitoring and verification plan and project design document were prepared by Agricola Super Limitada. For more information regarding the proposal and its consideration by the Executive Board please refer to case NM0022: “Methane capture and combustion of swine manure treatment for Peralillo” on <<http://cdm.unfccc.int/methodologies/approved>>;
- AM0016: “Greenhouse gas mitigation from improved Animal Waste Management Systems in confined animal feeding operations”, whose baseline study, monitoring and verification plan and project design document were prepared by AgCert Canada Co. on behalf of Granja Becker, L.B.Pork, Inc. and AgCert Canada Co. For more information regarding the proposal and its consideration by the Executive Board please refer to case NM0034-rev 2: “Granja Becker GHG Mitigation Project” on <<http://cdm.unfccc.int/methodologies/approved>>.

For more information regarding the proposals and their consideration by the Executive Board please refer to:

- Case NM0022: “Methane capture and combustion of swine manure treatment for Peralillo”;
- Case NM0034-rev2: “Granja Becker GHG Mitigation Project”.

on <<http://cdm.unfccc.int/goto/MPappmeth>>.

The methodology also refers to the latest version of the following tools:¹

- “Tool to determine project emissions from flaring gases containing Methane”;
- “Tool to calculate project emissions from electricity consumption”;
- “Tool to calculate project or leakage CO₂ emissions from fossil fuel combustion”.

For more information on the proposals and their consideration by the Executive Board as well as on approved methodological tools please refer to: <<http://cdm.unfccc.int/goto/MPappmeth>>.

Selected approach from paragraph 48 of the CDM modalities and procedures

“Emissions from a technology that represents an economically attractive course of action, taking into account barriers to investment”

Applicability

This methodology is applicable generally to manure management on livestock farms where the existing anaerobic manure treatment system, within the project boundary, is replaced by one or a combination of more than one animal waste management systems (AWMSs) that result in less GHG emissions.

¹ Please refer to <<http://cdm.unfccc.int/goto/MPappmeth>>.



This methodology is applicable to manure management projects with the following conditions:

- Farms where livestock populations, comprising of cattle, buffalo, swine, sheep, goats, and/or poultry, is managed under confined conditions;
- Farms where manure is not discharged into natural water resources (e.g. rivers or estuaries);
- In case of anaerobic lagoons treatments systems, the depth of the lagoons used for manure management under the baseline scenario should be at least 1m;²
- The annual average temperature in the site where the anaerobic manure treatment facility in the baseline existed is higher than 5°C;
- In the baseline case, the minimum retention time of manure waste in the anaerobic treatment system is greater than 1 month;
- The AWMS/process in the project case should ensure that no leakage of manure waste into ground water takes place, e.g., the lagoon should have a non-permeable layer at the lagoon bottom.

This baseline methodology shall be used in conjunction with the approved monitoring methodology ACM0010 (Consolidated baseline methodology for GHG emission reductions from manure management systems).

Identification of the baseline scenario

The methodology determines the baseline scenario through the following steps:

- Step 1: Define alternative scenarios to the proposed CDM project activity;
- Step 2: Barriers analysis;
- Step 3: Investment analysis;
- Step 4: Baseline revision at renewal of crediting period.

Step 1: Define alternative scenarios to the proposed CDM project activity

- (1) Identify realistic and credible alternative scenarios that are available either to the project participants or to other potential project developers³ for managing the manure. These alternative scenarios should include:
 - The proposed project activity not being registered as a CDM project activity;
 - All other plausible and credible alternatives to the project activity scenario, including the common practices in the relevant sector. In doing so, the complete set of possible manure management systems listed in the 2006 IPCC Guidelines for National Greenhouse Gas Inventories (Chapter 10, Table 10.17) should be taken into account. In drawing up a list of possible scenarios, possible combinations of different Animal Waste Management Systems (AWMS) should be taken into account;
 - If applicable, continuation of the current situation (no project activity or other alternatives undertaken).

² In particular, loading in the waste water streams has to be high enough to assure that the lagoon develops an anaerobic bottom layer and that algal oxygen production can be ruled out.

³ For example, a coal-fired power station or hydropower may not be an alternative for an independent power producer investing in wind energy or for a sugar factory owner investing in a co-generation, but may be an alternative for a public utility. As a result, the proposed project may be able to avoid emissions that would have occurred from the coal-fired power station that would have been built (or built earlier) by the utility in the absence of the CDM. Therefore, there may be cases where the baseline scenario includes an alternative that is not accessible to the project participant. However, there are also cases where all the alternatives are accessible to the project participant: for instance, this may be the case for projects flaring landfill gas, improving boilers, etc.



Eliminate alternatives that are not in compliance with all applicable legal and regulatory requirements. Apply Sub-step 1b of the latest version of the “Tool for demonstration assessment and of additionality”.

For the purpose of identifying alternative scenarios that are common practice, provide an analysis of other manure management practices implemented previously or currently underway. Projects are considered similar if they are in the same country/region, are of a similar scale, and take place in a comparable environment with respect to regulatory framework, investment climate, access to technology, access to financing, etc. Other CDM project activities are not to be included in this analysis. Provide documented evidence. On the basis of that analysis, identify and include all alternative scenarios that are common practice.

Step 2: Barrier analysis

Establish a complete list of barriers that would prevent alternative scenarios to occur in the absence of the CDM. Such barriers may include:

- Investment barriers, *inter alia*:
 - Debt funding is not available for this type of innovative activities;
 - Neither access to international capital markets due to real or perceived risks associated with domestic or foreign direct investment in the country where the project activity is to be implemented.
- Technological barriers, *inter alia*:
 - Skilled and/or properly trained labour to operate and maintain the technology is not available and no education/training institution in the host country provides the needed skill, leading to equipment disrepair and malfunctioning;
 - Lack of infrastructure for implementation of the technology.
- Barriers due to prevailing practice, *inter alia*:
 - The alternative is the “first of its kind”: No alternative of this type is currently operational in the host country or region.

Since the proposed project activity not being registered as a CDM project activity shall be one of the considered alternatives, any barrier that may prevent the project activity to occur shall be included in that list.

Provide transparent and documented evidence, and offer conservative interpretations of this documented evidence, as to how it demonstrates the existence and significance of the identified barriers. Anecdotal evidence can be included, but alone is not sufficient proof of barriers. The type of evidence to be provided may include:

- (a) Relevant legislation, regulatory information or industry norms;
- (b) Relevant (sectoral) studies or surveys (e.g. market surveys, technology studies, etc) undertaken by universities, research institutions, industry associations, companies, bilateral/multilateral institutions, etc;
- (c) Relevant statistical data from national or international statistics;
- (d) Documentation of relevant market data (e.g. market prices, tariffs, rules);

- (e) Written documentation from the company or institution developing or implementing the CDM project activity or the CDM project developer, such as minutes from Board meetings, correspondence, feasibility studies, financial or budgetary information, etc;
- (f) Documents prepared by the project developer, contractors or project partners in the context of the proposed project activity or similar previous project implementations;
- (g) Written documentation of independent expert judgments from industry, educational institutions (e.g. universities, technical schools, training centers), industry associations and others.

Assess for all barriers identified which scenario alternatives would be prohibited from being implemented by the barrier and eliminate those alternatives from further consideration.

If there is only one scenario alternative that is not prevented by any barrier, and

- (i) *If this alternative is not the proposed project activity not being registered as a CDM project activity, then this scenario alternative is the most plausible baseline scenario;*
- (ii) *If this alternative is the proposed project activity not being registered as a CDM project activity, then the project activity is the most plausible baseline scenario;*
- (iii) *If there are still several baseline scenario alternatives remaining, either go to Step III (investment analysis) or choose the alternative with the lowest emissions (i.e. the most conservative) as the most plausible baseline scenario.*

Step 3: Investment analysis

Undertake investment analysis of all the alternatives that do not face any barriers, as identified in Step II. For each alternative, all costs and economic benefits attributable to the waste management scenario should be illustrated in a transparent and complete manner, as shown in Table 1 below.

Table 1: Calculation of NPV and IRR

COSTS AND BENEFITS	Year 1	Year 2	Year n	Year n+1
Equipment costs (specify the equipment needed)				
Installation costs				
Maintenance costs				
Other costs (e.g. operation, consultancy, engineering, etc.)				
Revenues from the sale of electricity or other project related products, when applicable				
SUBTOTAL				
TOTAL				
NPV (US\$) (specify discount rate)				
IRR (%)				

For each alternative baseline scenario, the internal rate of return (IRR) and/or the net present value (NPV) should be calculated. The calculation of the IRR must include *inter alia* investment costs, operation and maintenance costs, as well as any other appropriate costs (engineering, consultancy, etc.). Similarly, take into consideration all revenues generated by each manure management scenario, including revenue from the sale of electricity and cost savings due to avoided electricity purchases and other sources of income related to the implementation of the project, except revenues from the sale of CERs.

The IRR for all alternative scenarios should be calculated in a conservative manner. To ensure this, assumptions and parameters for the proposed project activity, if still under consideration, should be chosen in a conservative way such that they tend to lead to a higher IRR and NPV. For all other scenarios



considered, assumptions and parameters should be chosen in a way such that they tend to lead to a lower IRR and NPV. This conservative choice of parameters and assumptions should be ensured by obtaining expert opinions and should be evaluated by the DOE as part of the validation of the project activity.

If the IRR cannot be calculated due to the existence of only negative flows in the financial analysis, the comparison should be based on the NPV, stating explicitly the discount rate used.

The baseline scenario is identified as the economically most attractive course of action i.e., alternative scenario with highest IRR or NPV, where the IRR cannot be calculated

Step 4: Baseline revision at renewal of crediting period

Renewal of crediting period: The project participants, at the renewal of each credit period, will undertake the relevance of baseline scenario identified above taking into account change in the relevant national and/or sectoral regulations between two crediting periods as well as any increase in the animal stock above the pre-project animal stock. This assessment will be undertaken by the verifying DOE.

Additionality

If the baseline determination in this methodology (see section "Identification of the baseline scenario" above) demonstrates that the baseline is different from the proposed project activity not undertaken as a CDM project activity it may be concluded that the project is additional.

Project boundary

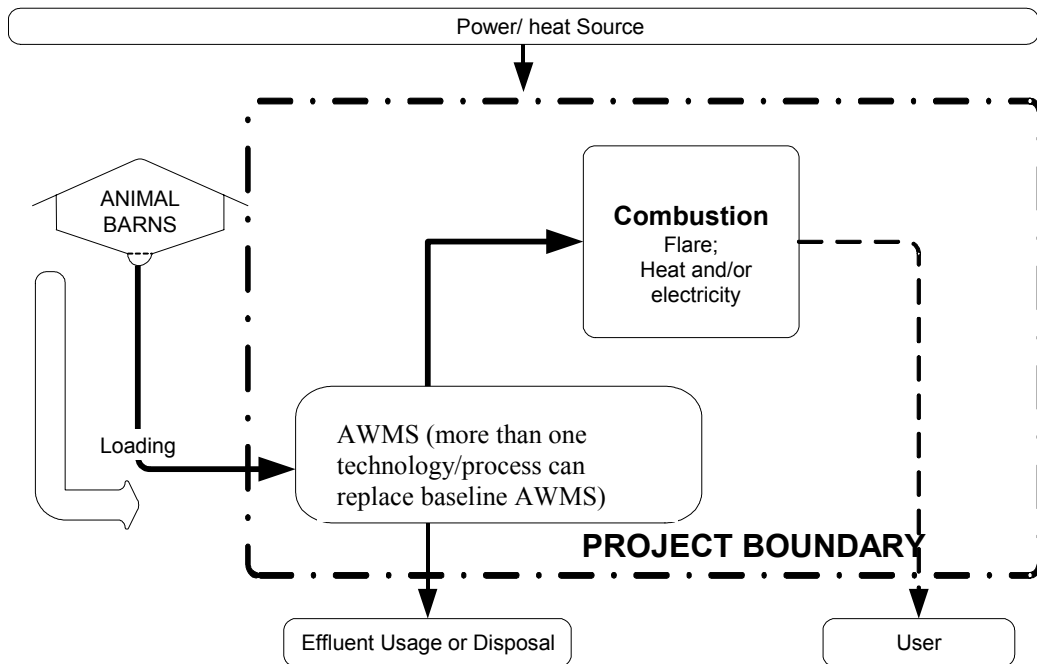


Figure 1: Project activity boundary

	Source	Gas		Justification / Explanation
Baseline	Direct emissions from the waste treatment processes	CH ₄	Included	The major source of emissions in the baseline
		N ₂ O	Included	
		CO ₂	Excluded	CO ₂ emissions from the decomposition of organic waste are not accounted
	Emissions from electricity consumption / generation	CO ₂	Included	Electricity may be consumed from the grid or generated onsite in the baseline scenario
		CH ₄	Excluded	Excluded for simplification. This is conservative.
		N ₂ O	Excluded	Excluded for simplification. This is conservative.
	Emissions from thermal energy generation	CO ₂	Included	If thermal energy generation is included in the project activity
		CH ₄	Excluded	Excluded for simplification. This is conservative.
		N ₂ O	Excluded	Excluded for simplification. This is conservative.



	Source	Gas		Justification / Explanation
Project Activity	Emissions from thermal energy generation	CO ₂	Included	May be an important emission source
		CH ₄	Excluded	Excluded for simplification. This emission source is assumed to be very small.
		N ₂ O	Excluded	Excluded for simplification. This emission source is assumed to be very small.
	Emissions from on-site electricity use	CO ₂	Included	May be an important emission source. If electricity is generated from collected biogas, these emissions are not accounted for.
		CH ₄	Excluded	Excluded for simplification. This emission source is assumed to be very small.
		N ₂ O	Excluded	Excluded for simplification. This emission source is assumed to be very small.
	Direct emissions from the waste treatment processes	N ₂ O	Included	
		CO ₂	Excluded	CO ₂ emissions from the decomposition of organic waste are not accounted
		CH ₄	Included	The emission from uncombusted methane, physical leakage, and minor CH ₄ emissions from aerobic treatment.

The project proponents will provide a clear diagrammatic representation of the project scenario with all the treatments steps adopted in treating the manure waste as well as its final disposal in the CDM-PDD. The diagrammatic representation will also indicate the fraction of volatile solids degraded within the project boundary in pre-project situation before disposal. This shall include the final disposal of methane, if any captured, and also the auxiliary energy used to run project treatments steps.

The precise location of the farm(s) where the project activity takes place shall be identified in the CDM-PDD (e.g., co-ordinates of farm (s) using global positioning system).

Baseline Emissions

The baseline is the AWMSs identified through the baseline selection procedure.

Baseline emissions are:

$$BE_y = BE_{CH_4,y} + BE_{N_2O,y} + BE_{elec/heat,y} \quad (1)$$

Where:

BE_y = Baseline emissions in year y , in tCO₂e/year

$BE_{CH_4,y}$ = Baseline methane emissions in year y , in tCO₂e/year

$BE_{N_2O,y}$ = Baseline N₂O emissions in year y , in tCO₂e/year

$BE_{elec/heat,y}$ = Baseline CO₂ emissions from electricity and/or heat used in the baseline, in tCO₂e/year

(i) Methane emissions

Manure management system in the baseline could be based on different treatment systems and on one or more stages. Therefore:

$$BE_{CH_4,y} = GWP_{CH_4} \cdot D_{CH_4} * \sum_{j,LT} MCF_j * B_{0,LT} * N_{LT} * VS_{LT,y} * MS\%_{Bl,j} \quad (2)$$

$BE_{CH_4,y}$	The annual baseline methane emissions in t CO ₂ e/y
GWP_{CH_4}	Global Warming Potential (GWP) of CH ₄
D_{CH_4}	CH ₄ density (0.00067 t/m ³ at room temperature (20 °C) and 1 atm pressure)
MCF_j	Annual methane conversion factor (MCF) for the baseline AWMS _j from IPCC 2006 table 10.17, chapter 10, volume 4
$B_{0,LT}$	Maximum methane producing potential of the volatile solid generated, in m ³ CH ₄ /kg _{dm} , by animal type LT
N_{LT}	Annual Average number of animals of type LT for the year y, expressed in numbers.
$VS_{LT,y}$	Annual volatile solid for livestock LT entering all AWMS [on a dry matter weight basis (kg-dm/animal/year), as estimated below
$MS\%_{Bl,j}$	Fraction of manure handled in system j
LT	All types of livestock

Estimation of various variables and parameters for above equations:

(A) $VS_{LT,y}$ can be determined in one of the following ways, stated in the order of preference:

- Using published country specific data. If the data is expressed in kg dm per day, multiply the value with nd_y (number of days in year y).
- Estimation of VS based on dietary intake of livestock:

$$VS_{LT,y} = \left[GE_{LT} * \left(1 - \frac{DE_{LT}}{100} \right) + (UE * GE_{LT}) \right] * \left[\left(\frac{1 - ASH}{ED_{LT}} \right) \right] * nd_y \quad (3)$$

Where:

$VS_{LT,y}$	= Annual volatile solid excretions on a dry matter weight basis (kg-dm/year)
GE_{LT}	= Daily average gross energy intake in MJ/day
DE_{LT}	= Digestible energy of the feed in percent (IPCC 2006 defaults available)
$UE * GE_{LT}$	= Urinary energy expressed as fraction of GE. Typically 0.04GE can be considered urinary energy excretion by most ruminants (reduce to 0.02 for ruminants fed with 85% or more grain in the diet or for swine). Use country-specific values where available
ASH	= Ash content of manure calculated as a fraction of the dry matter feed intake. Use country-specific values where available
ED_{LT}	= Energy density of the feed in MJ/kg (IPCC notes the energy density of feed, ED, is typically 18.45 MJ/kg DM, which is relatively constant across a wide variety of grain-based feeds.) fed to livestock type LT. The project proponent will record the composition of the feed to enable the DOE to verify the energy density of the feed
nd_y	= Number of days in year y where the treatment plant was operational

3. Scaling default IPCC values VS_{default} to adjust for a site-specific average animal weight as shown in equation below:

$$VS_{LT,y} = \left(\frac{W_{\text{site}}}{W_{\text{default}}} \right) \cdot VS_{\text{default}} \cdot nd_y \quad (4)$$

Where:

- $VS_{LT,y}$ = Adjusted volatile solid excretion per year on a dry-matter basis for a defined livestock population at the project site in kg-dm/animal/yr
- W_{site} = Average animal weight of a defined population at the project site in kg
- W_{default} = Default average animal weight of a defined population in kg from where the data on VS_{default} is sourced (IPCC 2006 or US-EPA, which ever is lower)
- VS_{default} = Default value (IPCC 2006 or US-EPA, which ever is lower) for the volatile solid excretion per day on a dry-matter basis for a defined livestock population in kg-dm/animal/day
- nd_y = Number of days in year y where the treatment plant was operational

4. Utilizing published IPCC defaults, multiply the value with nd_y (number of days in year y).

Developed countries $VS_{LT,y}$ values can be used provided the following conditions can be satisfied:

- The genetic source of the production operations livestock originate from an Annex I Party;
- The farm use formulated feed rations (FFR) which are optimized for the various animal(s), stage of growth, category, weight gain/productivity and/or genetics;
- The use of FFR can be validated (through on-farm record keeping, feed supplier, etc.);
- The project specific animal weights are more similar to developed country IPCC default values.

The following sources should be used to calculate baseline emissions:

- IPCC 2006 guidelines, volume 4, chapter 10;
- US-EPA 2001: Development Document for the Proposed Revisions to the National Pollutant Discharge Elimination System Regulation and the Effluent Guidelines for Concentrated Animal Feeding Operations, Chapter 8.2 (<http://epa.gov/ost/guide/cafo/devdoc.html>).

(B) Maximum Methane Production Potential ($B_{0,LT}$):

This value varies by species and diet. Where default values are used, they should be taken from tables 10A-4 through 10A-9 (IPCC 2006 Guidelines for National Greenhouse Gas Inventories volume 4, chapter 10) specific to the country where the project is implemented.

Developed countries $B_{0,LT}$ values can be used provided the following conditions are satisfied:

- The genetic source of the production operations livestock originate from an Annex I Party;
- The farm use formulated feed rations (FFR) which are optimized for the various animal(s), stage of growth, category, weight gain/productivity and/or genetics;
- The use of FFR can be validated (through on-farm record keeping, feed supplier, etc.);
- The project specific animal weights are more similar to developed country IPCC default values.

*(C) Methane conversion factors (MCFs):*

- The IPCC 2006 MCF values given in table 10.17 (chapter 10, volume 4) should be used, which is attached here as Annex 3. MCF values depend on the annual average temperature where the anaerobic manure treatment facility in the baseline existed. For average annual temperatures below 10 °C and above 5 °C, a linear interpolation should be used to estimate the MCF value at the specific temperature assuming an MCF value of 0 at an annual average of 5 °C. Future revisions to the IPCC Guidelines for National Greenhouse Gas Inventories should be taken into account;
- A conservativeness factor should be applied by multiplying MCF values (estimated as per above bullet) with a value of 0.94, to account for the 20% uncertainty in the MCF values as reported by IPCC 2006.

For subsequent treatment stages, the reduction of the volatile solids during a treatment stage is estimated based on referenced data for different treatment types. Emissions from the next treatment stage are then calculated following the approach outlined above, but with volatile solids adjusted for the reduction from the previous treatment stages by multiplying by $(1 - R_{VS})$, where R_{VS} is the relative reduction of volatile solids from the previous stage. The relative reduction (R_{VS}) of volatile solids depends on the treatment technology and should be estimated in a conservative manner. Default values for different treatment technologies can be found in Table 8.10 of chapter 8.2 in US-EPA (2001).⁴ These values are provided in Annex 1.

(D) Annual Average number of animals (N_{LT}):

$$N_{LT} = N_{da} * \left(\frac{N_p}{365} \right) \quad (5.a)$$

Where:

N_{LT} = Annual average number of animals of type LT for the year y , expressed in numbers

N_{da} = Number of days animal is alive in the farm in the year y , expressed in numbers

N_p = Number of animals produced annually of type LT for the year y , expressed in numbers

If the project developer can monitor in a reliable and traceable way the daily stock of animals in the farm, discounting dead animals and animals discarded from the productive process from the daily stock, then the annual average number of animals (N_{LT}) may be calculated as an average of the daily stock of animals in the farm without considering dead animals and discarded animals.

$$N_{LT} = \frac{\sum_{1}^{365} N_{AA}}{365} \quad (5.b)$$

Where:

N_{LT} : = Annual average number of animals of type LT for the year y , expressed in numbers

N_{AA} = Daily stock of animals in the farm, discounting dead and discarded animals

⁴ <<http://www.epa.gov/ost/guide/cafo/pdf/DDChapters8.pdf>>.

(ii) N_2O emissions from manure management

$$BE_{N_2O,y} = GWP_{N_2O} \cdot CF_{N_2O-N,N} \cdot \frac{1}{1000} \cdot (E_{N_2O,D,y} + E_{N_2O,ID,y}) \quad (6)$$

Where:

- $BE_{N_2O,y}$ = Annual baseline N_2O emissions in t CO_2e/yr
- GWP_{N_2O} = Global Warming Potential (GWP) for N_2O
- $CF_{N_2O-N,N}$ = Conversion factor N_2O-N to N_2O (44/28)
- $E_{N_2O,D,y}$ = Direct N_2O emission in kg $N_2O-N/year$
- $E_{N_2O,ID,y}$ = Indirect N_2O emission in kg $N_2O-N/year$

$$E_{N_2O,D,y} = \sum_{j,LT} (EF_{N_2O,D,j} \cdot NEX_{LT,y} \cdot N_{LT} \cdot MS\%_{Bl,j}) \quad (7)$$

Where:

- $E_{N_2O,D,y}$ = Are the direct nitrous oxide emissions in kg of N_2O per year
- $EF_{N_2O,D,j}$ = Is the direct N_2O emission factor for the treatment system j of the manure management system in kg N_2O-N/kg N (estimated with site-specific, regional or national data if such data is available, otherwise use default EF_3 from table 10.21, chapter 10, volume 4, in the IPCC 2006 Guidelines for National Greenhouse Gas Inventories)
- $NEX_{LT,y}$ = Is the annual average nitrogen excretion per head of a defined livestock population in kg N/animal/year estimated as described in Annex 2
- $MS\%_{Bl,j}$ = Fraction of manure handled in system j , in %
- N_{LT} = Annual Average number of animals of type LT for the year y estimated as per equation (5.a) or (5.b), expressed in numbers

$$E_{N_2O,ID,y} = \sum_{j,LT} (EF_{N_2O,ID,j} \cdot F_{gasm} \cdot NEX_{LT,y} \cdot N_{LT} \cdot MS\%_{Bl,j}) \quad (8)$$

Where:

- $E_{N_2O,ID,y}$ = Are the indirect nitrous oxide emissions in kg of N_2O per year
- $EF_{N_2O,ID,j}$ = Is the indirect N_2O emission factor for N_2O emissions from atmospheric deposition of nitrogen on soils and water surfaces, kg N_2O-N/kg NH_3-N and NO_x-N emitted, estimated with site-specific, regional or national data if such data is available. Otherwise, default values for EF_4 from table 11.3, chapter 11, volume 4 of IPCC 2006 Guidelines for National Greenhouse Gas Inventories can be used
- $NEX_{LT,y}$ = Is the annual average nitrogen excretion per head of a defined livestock population in kg N/animal/year estimated as described in Annex 2
- $MS\%_{Bl,j}$ = Fraction of manure handled in system j
- F_{gasm} = Percent of managed manure nitrogen for livestock category that volatilises as NH_3 and NO_x in the manure management system
- N_{LT} = Annual Average number of animals of type LT for the year y estimated as per equation (5.a) or (5.b), expressed in numbers

For subsequent treatment stages, the reduction of the nitrogen during a treatment stage is estimated based on referenced data for different treatment types. Emissions from the next treatment stage are then calculated following the approach outlined above, but with nitrogen adjusted for the reduction from the previous treatment stages by multiplying by $(1 - R_N)$, where R_N is the relative reduction of nitrogen from the previous stage. The relative reduction (R_N) of nitrogen depends on the treatment technology and

should be estimated in a conservative manner. Default values for different treatment technologies can be found in Chapter 8.2 in US-EPA (2001).⁵ These values are provided in Annex 1.

(iii) CO₂ emission from electricity and heat within the project boundary

$$BE_{elec/heat,y} = EG_{BL,y} \cdot CEF_{Bl,elec,y} + EG_{d,y} \cdot CEF_{grid} + HG_{BL,y} \cdot CEF_{Bl,therm,y} \quad (9)$$

Where:

- $EG_{BL,y}$ = Is the amount of electricity in the year y that would be consumed at the project site in the absence of the project activity (MWh) for operating AWMS
- $CEF_{Bl,elec,y}$ = Is the carbon emissions factor for electricity consumed at the project site in the absence of the project activity (tCO₂/MWh)
- $EG_{d,y}$ = Is the amount of electricity generated utilizing the biogas collected during project activity and exported to the grid during the year y (MWh)
- CEF_{grid} = Is the carbon emissions factor for the grid in the project scenario (tCO₂/MWh)
- $HG_{BL,y}$ = Is the quantity of thermal energy that would be consumed in year y at the project site in the absence of the project activity (MJ) using fossil fuel for operating AWMS
- $CEF_{Bl,therm}$ = Is the CO₂ emissions intensity for thermal energy generation (tCO₂ e/MJ)

Determination of $CEF_{Bl,elec}$:

In cases where electricity would in the absence of the project activity be generated in an on-site fossil fuel fired power plant, project participants should use for $CEF_{Bl,elec}$ the default emission factor for a diesel generator with a capacity of more than 200 kW for small-scale project activities (0.8 tCO₂/MWh, see Table I.D.1 in the simplified baseline and monitoring methodology AMS.I.D for selected small-scale CDM project activity categories).

In cases where electricity would, in the absence of the project activity, be purchased from the grid, the emission factor $CEF_{Bl,elec}$ should be calculated according to approved methodology “Tool for calculation of emission factor for electricity systems”. If electricity consumption is less than small scale threshold (15 GWh/yr), use the default emission factor for a diesel generator with a capacity of more than 200 kW for small-scale project activities (0.8 tCO₂/MWh, see Table I.D.1 in the simplified baseline and monitoring methodology AMS.I.D for selected small-scale CDM project activity categories).

Determination of CEF_{grid} :

CEF_{grid} should be calculated according to “Tool for calculation of emission factor for electricity systems”.

Determination of $CEF_{Bl,therm}$:

$CEF_{Bl,therm}$ is the CO₂ emissions intensity for thermal energy generation (tCO₂e/MJ).

Baseline electricity and thermal energy consumptions should be estimated as the average of the historical 3 years consumption.

Project Emissions

The project activity might include one or more AWMS to treat the manure. For example, the manure might be first treated in an anaerobic digester and the treated waste might be further processed using an aerobic pond. Each AWMS is referred to as a treatment stage.

⁵ <<http://www.epa.gov/ost/guide/cafo/pdf/DDChapters8.pdf>>.



Project emissions are estimated as follows:

$$PE_y = PE_{AD,y} + PE_{Aer,y} + PE_{N_2O,y} + PE_{PL,y} + PE_{flare,y} + PE_{elec/heat} \quad (10)$$

$PE_{AD,y}$	Leakage from AWMS systems that capture's methane in t CO ₂ e/yr
$PE_{Aer,y}$	Methane emissions from AWMS that aerobically treats the manure in t CO ₂ e/yr
$PE_{N_2O,y}$	Nitrous oxide emission from project manure waste management system in t CO ₂ e/yr
$PE_{PL,y}$	Physical leakage of emissions from biogas network to flare the captured methane or supply to the facility where it is used for heat and/or electricity generation in t CO ₂ e/yr
$PE_{flare,y}$	Project emissions from flaring of the residual gas stream in t CO ₂ e/yr
$PE_{elec/heat}$	Project emissions from use of heat and/or electricity in the project case in t CO ₂ e/yr

(i) Methane emissions from AWMS where gas is captured ($PE_{AD,y}$):

IPCC guidelines specify physical leakage from anaerobic digesters as being 15% of total biogas production. Where project participants use lower values for percentage of physical leakage, they should provide measurements proving that this lower value is appropriate for the project.

Ex ante leakage to be reported in the CDM-PDD will be estimated using equation 11.a or 11.b below, with a leakage factor of 0.15 or a lower value, if properly justified through documented evidence (which should be validated by the DOE).

If project case AWMS is anaerobic digester only, then use equation (11.a), else use equation (11.b).

$$PE_{AD,y} = GWP_{CH_4} \cdot D_{CH_4} \cdot LF_{AD} \cdot F_{AD} \cdot \sum_{LT} (B_{0,LT} \cdot N_{LT} \cdot VS_{LT,y}) \quad (11.a)$$

$$PE_{AD,y} = GWP_{CH_4} \cdot D_{CH_4} \cdot LF_{AD} \cdot F_{AD} \cdot \left[\prod_{n=1}^N (1 - R_{VS,n}) \right] \cdot \sum_{j,LT} (B_{0,LT} \cdot N_{LT} \cdot VS_{LT,y} \cdot MS\%_j) \quad (11.b)$$

D_{CH_4}	CH ₄ density (0.00067 t/m ³ at room temperature (20 °C) and 1 atm pressure)
LF_{AD}	Methane leakage from Anaerobic digesters, default of 0.15
F_{AD}	Fraction of volatile solid directed to anaerobic digester
$R_{VS,n}$	Fraction of volatile solid treated in AWMS stage n. The project proponents shall provide the values based on proven test results. In absence of such values the conservative value of volatile solids treated in Annex 1 shall be used
LT	Index for livestock type
$B_{0,LT}$	CH ₄ production capacity from manure for livestock type LT, in m ³ CH ₄ /kg-VS, to be chosen based on procedure provided for in the baseline methodology section
N_{LT}	Annual average number of animals of type LT for the year y estimated as per equation (5.a) or (5.b), expressed in numbers
$VS_{LT,y}$	Annual volatile solid excretion of livestock type LT on a dry-matter basis in kg/animal/year
$MS\%_j$	Fraction of manure handled in system j

As noted in equations (11.a) and (11.b), not all volatile solids are degraded in the anaerobic digester. If the undegraded volatile solid in the effluent from anaerobic digester is discharged outside the project boundary without further treatment, these emissions should be treated as leakage and appropriately reported and accounted.

(ii) Methane emissions from aerobic AWMS treatment ($PE_{Aer,y}$):

IPCC guidelines specify emissions from aerobic lagoons as 0.1% of total methane generating potential of the waste processed, which can be used as a default for all types of aerobic AWMS treatment.

$$PE_{Aer,y} = GWP_{CH_4} \cdot D_{CH_4} * 0.001 * F_{Aer} * \left[\prod_{n=1}^N (1 - R_{VS,n}) \right] * \sum_{j,LT} (B_{0,LT} * N_{LT} * VS_{LT,y} * MS\%_j) + PE_{Sl,y} \quad (12)$$

$R_{VS,n}$	Fraction of volatile solid degraded in AWMS treatment method n of the N treatment steps prior to waste being treated in Aerobic lagoon
D_{CH_4}	CH ₄ density (0.00067 t/m ³ at room temperature (20 °C) and 1 atm pressure).
F_{Aer}	Fraction of volatile solid directed to Aerobic system
LT	Index for livestock type
$B_{0,LT}$	CH ₄ production capacity from manure for livestock type LT , in m ³ CH ₄ /kg-VS, to be chosen based on procedure provided for in the Baseline methodology section.
$VS_{LT,y}$	Annual volatile solid excretion livestock type LT on a dry-matter basis in kg/animal/year
N_{LT}	Annual average number of animals of type LT for the year y estimated as per equation (5.a) or (5.b), expressed in numbers
$PE_{Sl,y}$	CH ₄ emissions from sludge disposed of in storage pit prior to disposal during the year y , expressed in tons of CO ₂ e /yr
$MS\%_j$	Fraction of manure handled in system j

Aerobic treatment results in large accumulations of sludge. Sludge requires removal and has large VS values. It is important to identify the following management process for the sludge and estimate the emissions from that management process. If the sludge ponds are not within the project boundary, the emissions should be included in leakages. The emissions from sludge ponds shall be estimated as follows:

$$PE_{Sl,y} = GWP_{CH_4} \cdot D_{CH_4} * MCF_{sl} * F_{Aer} * \left[\prod_{n=1}^N (1 - R_{VS,n}) \right] * \sum_{j,LT} (B_{0,LT} * N_{LT} * VS_{LT,y} * MS\%_j) \quad (13)$$

$R_{VS,n}$	Fraction of volatile solid degraded in AWMS treatment method n of the N treatment steps prior to sludge being treated. Values for R_{vs} should be taken from Annex 1
D_{CH_4}	CH ₄ density (0.00067 t/m ³ at room temperature (20 °C) and 1 atm pressure).
F_{Aer}	Fraction of volatile solid directed to Aerobic system
LT	Index for livestock type
$B_{0,LT}$	CH ₄ production capacity from manure for livestock type LT , in m ³ CH ₄ /kg-VS, to be chosen based on procedure provided for in the baseline methodology section
$VS_{LT,y}$	Annual volatile solid excretion of livestock type LT on a dry-matter basis in kg/animal/year
N_{LT}	Annual average number of animals of type LT for the year y estimated as per equation (5.a) or (5.b), expressed in numbers
$MS\%_j$	Fraction of manure handled in system j
MCF_{sl}	Methane conversion factor (MCF) for the sludge stored in sludge pits estimated as in the baseline emissions section

(iii) N_2O emissions from manure management

$$PE_{N_2O,y} = GWP_{N_2O} \cdot CF_{N_2O-N,N} \cdot \frac{1}{1000} \cdot (E_{N_2O,D,y} + E_{N_2O,ID,y}) \quad (14)$$

Where:

- $PE_{N_2O,y}$ = Annual project N_2O emissions in t CO₂e/yr
- GWP_{N_2O} = Global Warming Potential (GWP) for N_2O
- $CF_{N_2O-N,N}$ = Conversion factor N_2O-N to N_2O (44/28)
- $E_{N_2O,D,y}$ = Direct N_2O emission in kg N_2O-N /year
- $E_{N_2O,ID,y}$ = Indirect N_2O emission in kg N_2O-N /year

$$E_{N_2O,D,y} = \sum_{j,LT} (EF_{N_2O,D,j} \cdot NEX_{LT,y} \cdot N_{LT} \cdot MS\%_j) \quad (15)$$

Where:

- $E_{N_2O,D,y}$ = Are the direct nitrous oxide emissions in kg of N_2O per year
- $EF_{N_2O,D,j}$ = Is the direct N_2O emission factor for the treatment system j of the manure management system in kg N_2O-N /kg N (estimated with site-specific, regional or national data if such data is available, otherwise use default EF_3 in volume 4, chapter 10, table 10.21 in IPCC 2006 Guidelines)
- $NEX_{LT,y}$ = Is the annual average nitrogen excretion per head of a defined livestock population in kg N/animal/year estimated as described in Annex 2
- MS_j = Fraction of manure handled in system j, in %
- N_{LT} = Annual average number of animals of type LT for the year y estimated as per equation (5.a) or (5.b), expressed in numbers

$$E_{N_2O,ID,y} = \sum_{j,LT} (EF_{N_2O,ID,j} * F_{gasm} * NEX_{LT,y} * N_{LT} * MS\%_j) \quad (16)$$

Where:

- $E_{N_2O,y}$ = Are the indirect nitrous oxide emissions in kg of N_2O per year
- $EF_{N_2O,ID,j}$ = Is the indirect N_2O emission factor for N_2O emissions from atmospheric deposition of nitrogen on soils and water surfaces, kg N_2O-N /kg NH_3-N and NO_x-N emitted estimated with site-specific, regional or national data if such data is available. Otherwise, default values for EF_4 from table 11.3, chapter 11, volume 4 of IPCC 2006 guidelines can be used
- $NEX_{LT,y}$ = Is the annual average nitrogen excretion per head of a defined livestock population in kg N/animal/year estimated as described in Annex 2
- $MS\%_j$ = Fraction of manure handled in system j
- F_{gasm} = Percent of managed manure nitrogen for livestock category that volatilises as NH_3 and NO_x in the manure management system
- N_{LT} = Annual average number of animals of type LT for the year y estimated as per equation (5.a) or (5.b), expressed in numbers

For subsequent treatment stages, the reduction of the nitrogen during a treatment stage is estimated based on referenced data for different treatment types. Emissions from the next treatment stage are then calculated following the approach outlined above, but with nitrogen adjusted for the reduction from the previous treatment stages by multiplying by $(1-R_N)$, where R_N is the relative reduction of nitrogen from the previous stage. The relative reduction (R_N) of nitrogen depends on the treatment technology and

should be estimated in a conservative manner. Default values for different treatment technologies can be found in Chapter 8.2 in US-EPA (2001).⁶ These values are provided in Annex 1.

(iv) *Physical Leakage from distribution network of the captured methane in (PE_{PL})*

This refers to leaks in the biogas system from the biogas pipeline delivery system. The sum of the quantities of captured methane fed to the flare, to the power plant and to the boiler (measured as per the monitoring plan) must be compared annually with the total methane generated as measured by meter at the outlet of the methane generating digester. The difference between the monitored value of methane generated and that consumed in flare/electricity generation/heat shall be accounted as leakage from the pipelines.

In the case where biogas is just flared and the pipeline from collection point to flare is short (i.e., less than 1 km, and for on site delivery only), one flow meter can be used. In such cases the physical leakage may be considered as zero.

(v) *Project emissions from flaring of the residual gas stream ($PE_{flare,y}$):*

The combustion of biogas methane may give rise to significant methane emissions as a result of incomplete or inefficient combustion.

Project emissions from flaring of the residual gas stream should be determined following the procedure described in the “*Tool to determine project emissions from flaring gases containing Methane*”.

(vi) *Project emissions from heat use and electricity use ($PE_{elec/heat}$):*

$$PE_{elec/heat,y} = PE_{Elec,y} + \sum_j PE_{heat,j,y} \quad (17)$$

Where:

$PE_{Elec,y}$ = Is the emissions from consumption of electricity in the project case. The project emissions from electricity consumption ($PE_{Elec,y} = PE_{EC,y}$) will be calculated following the latest version of “Tool to calculate project emissions from electricity consumption”. In case, the electricity consumption is not measured then the electricity consumption shall be estimated as follows:

$$EC_{PJ,y} = \sum_i CP_{i,y} * 8760, \text{ where } CP_{i,y} \text{ is the rated capacity (in MW) of electrical equipment } i \text{ used for project activity}$$

$PE_{heat,j,y}$ = Is the emissions from consumption of heat in the project case. The project emissions from fossil fuel combustion ($PE_{heat,j,y} = PE_{FC,j,y}$) will be calculated following the latest version of “Tool to calculate project or leakage CO₂ emissions from fossil fuel combustion”. For this purpose, the processes j in the tool corresponds to all fossil fuel combustion in the paper plant established as part of the project activity, as well as any other on-site fuel combustion for the purposes of the project activity

⁶ <<http://www.epa.gov/ost/guide/cafo/pdf/DDChapters8.pdf>>.

Leakage

Leakage covers the emissions from land application of treated manure, outside the project boundary. These emissions are estimated as net of those released under project activity and those released in the baseline scenario. Net leakage of N₂O and CH₄ are only considered if they are positive.

$$LE_y = (LE_{P,N_2O} - LE_{B,N_2O}) + (LE_{P,CH_4} - LE_{B,CH_4}) \quad (18)$$

Where:

LE_{P,N_2O} = Are the N₂O emissions released during project activity from land application of the treated manure, in tCO₂e/year

LE_{B,N_2O} = Are the N₂O emissions released during baseline scenario from land application of the treated manure, in tCO₂e/year

LE_{P,CH_4} = Are the CH₄ emissions released during project activity from land application of the treated manure, in tCO₂e/year

LE_{B,CH_4} = Are the CH₄ emissions released during baseline scenario from land application of the treated manure, in tCO₂e/year

(i) Estimation of N₂O emissions:

The baseline case N₂O emissions are estimated using the following equations:

$$LE_{B,N_2O} = GWP_{N_2O} \cdot CF_{N_2O-N,N} \cdot \frac{1}{1000} * (LE_{N_2O,land} + LE_{N_2O,runoff} + LE_{N_2O,vol}) \quad (19)$$

$$LE_{N_2O,land} = EF_1 * \prod_{n=1}^N (1 - R_{N,n}) * \sum_{LT} NEX_{LT,y} \cdot N_{LT} \quad (20)$$

$$LE_{N_2O,runoff} = EF_5 * F_{leach} * \prod_{n=1}^N (1 - R_{N,n}) * \sum_{LT} NEX_{LT,y} \cdot N_{LT} \quad (21)$$

$$LE_{N_2O,vol} = EF_4 * \prod_{n=1}^N (1 - R_{N,n}) * F_{gasm} * \sum_{LT} NEX_{LT,y} \cdot N_{LT} \quad (22)$$

Where:

$LE_{N_2O,land}$ = Direct nitrous oxide emission from application of manure waste, in Kg N₂O-N/year

$LE_{N_2O,runoff}$ = Nitrous oxide emission due to leaching and run-off, in Kg N₂O-N/year

F_{gasm} = Fraction of animal manure N that volatilizes as NH₃ and NO_x in kg NH₃-N and NO_x-N per kg of N, estimated with site-specific, regional or national data if such data is available. Otherwise, default values from table 11.3, chapter 11, volume 4 of IPCC 2006 guidelines can be used

N_{LT} = Annual average number of animals of type LT estimated as per equation (5.a) or (5.b), expressed in numbers

NEX_{LT} = Average annual N excretion per head per animal category LT in kg - N/animal-year (estimated as in annex 2)

EF_1 = Emission factor for direct emission of N₂O from soils in Kg N₂O-N/kg N, estimated with site-specific, regional or national data if such data is available. Otherwise, default values from table 11.1, chapter 11, volume 4 of IPCC 2006 guidelines can be used

EF_5	= Emission factor for indirect emission of N ₂ O from runoff in Kg N ₂ O-N/kg N, estimated with site-specific, regional or national data if such data is available. Otherwise, default values from table 11.3, chapter 11, volume 4 of IPCC 2006 guidelines can be used
EF_4	= Emission factor for N ₂ O emissions from atmospheric deposition of N on soils and water surfaces, [kg N- N ₂ O / (kg NH ₃ -N + NO _x -N volatilized)], estimated with site-specific, regional or national data if such data is available. Otherwise, default values from table 11.3, chapter 11, volume 4 of IPCC 2006 guidelines can be used.
F_{leach}	= Fraction of <i>all</i> N added to/mineralised in managed soils in regions where leaching/runoff occurs that is lost through leaching and runoff should be estimated with site-specific, regional or national data if such data is available. Otherwise, default values from table 11.3, chapter 11, volume 4 of IPCC 2006 guidelines can be used
$CF_{N2O-N,N}$	= Conversion factor (= 44/28)
$R_{N,n}$	= Fraction of NEX in manure waste that is reduced in the Baseline AWMS. The relative reduction of nitrogen depends on the treatment technology and should be estimated in a conservative manner. Default values for different treatment technologies can be found in Annex 1

The project case N₂O emissions are estimated using the following equations:

$$LE_{P,N2O} = GWP_{N2O} \cdot CF_{N2O-N,N} \cdot \frac{1}{1000} * (LE_{N2O,land} + LE_{N2O,runoff} + LE_{N2O,vol}) \quad (23)$$

$$LE_{N2O,land} = EF_1 * \prod_{n=1}^N (1 - R_{N,n}) * \sum_{LT} NEX_{LT,y} \cdot N_{LT} \quad (24)$$

$$LE_{N2O,runoff} = EF_5 * F_{leach} * \prod_{n=1}^N (1 - R_{N,n}) * \sum_{LT} NEX_{LT,y} \cdot N_{LT} \quad (25)$$

$$LE_{N2O,vol} = EF_4 * \prod_{n=1}^N (1 - R_{N,n}) * F_{gasm} * \sum_{LT} NEX_{LT,y} \cdot N_{LT} \quad (26)$$

Where:

$LE_{N2O,land}$	= Direct nitrous oxide emission from application of manure waste, in Kg N ₂ O-N/year
$LE_{N2O,runoff}$	= Nitrous oxide emission due to leaching and run-off, in Kg N ₂ O-N/year
F_{gasm}	= Fraction of animal manure N that volatilizes as NH ₃ and NO _x in kg NH ₃ -N and NO _x -N per kg of N, estimated with site-specific, regional or national data if such data is available. Otherwise, default values from table 11.3, chapter 11, volume 4 of IPCC 2006 guidelines can be used
N_{LT}	= Annual average number of animals of type LT estimated as per equation (5.a) or (5.b), expressed in numbers
NEX_{LT}	= Average annual N excretion per head per animal category LT in kg - N/animal-year (estimated as in annex 2)
EF_1	= Emission factor for direct emission of N ₂ O from soils in kg N ₂ O-N/kg N, estimated with site-specific, regional or national data if such data is available. Otherwise, default values from table 11.1, chapter 11, volume 4 of IPCC 2006 guidelines can be used

- EF_5 = Emission factor for indirect emission of N₂O from runoff in kg N₂O-N/kg N, estimated with site-specific, regional or national data if such data is available. Otherwise, default values from table 11.3, chapter 11, volume 4 of IPCC 2006 guidelines can be used
- EF_4 = Emission factor for N₂O emissions from atmospheric deposition of N on soils and water surfaces, [kg N- N₂O / (kg NH₃-N + NO_x-N volatilized)], estimated with site-specific, regional or national data if such data is available. Otherwise, default values from table 11.3, chapter 11, volume 4 of IPCC 2006 guidelines can be used
- F_{leach} = Fraction of *all* N added to/mineralised in managed soils in regions where leaching/runoff occurs that is lost through leaching and runoff should be estimated with site-specific, regional or national data if such data is available. Otherwise, default values from table 11.3, chapter 11, volume 4 of IPCC 2006 guidelines can be used
- $CF_{N_{20-N,N}}$ = Conversion factor (= 44/28)
- $R_{N,n}$ = Fraction of NEX in manure waste that is reduced in the project AWMS. The relative reduction of nitrogen depends on the treatment technology and should be estimated in a conservative manner. Default values for different treatment technologies can be found in Annex 1

It is possible to measure the quantity of manure applied to land in kg manure/yr (Q_{DM}) and the nitrogen concentration in kg N / kg manure (N_{DM}) in the manure to estimate the total quantity of nitrogen applied to land. In this case, $\prod_{n=1}^N (1 - R_{N,n}) * \sum_{LT} NEX_{LT,a} \cdot N_{LT}$ in equations (24), (25) and (26) above should be substituted by $Q_{DM} * N_{DM}$.

(ii) Methane emissions from disposal of treated manure

The calculation of methane emissions from land application of manure in the baseline and project cases are estimated from equations (27) and (28), below:

$$LE_{B,CH_4} = GWP_{CH_4} * D_{CH_4} * MCF_d * \left[\prod_{n=1}^N (1 - R_{VS,n}) \right] * \sum_{j,LT} (B_{0,LT} * N_{LT} * VS_{LT,y} * MS\%_j) \quad (27)$$

$$LE_{P,CH_4} = GWP_{CH_4} * D_{CH_4} * MCF_d * \left[\prod_{n=1}^N (1 - R_{VS,n}) \right] * \sum_{j,LT} (B_{0,LT} * N_{LT} * VS_{LT,y} * MS\%_j) \quad (28)$$

- LE_{B,CH_4} Methane leakage emissions in the baseline (t CO₂e / yr)
- LE_{P,CH_4} Methane leakage emissions in the project case (t CO₂e / yr)
- $R_{VS,n}$ Fraction of volatile solid degraded in AWMS n prior to sludge being treated. Values for R_{VS} should be taken from annex 1
- GWP_{CH_4} Global Warming Potential (GWP) of CH₄.
- D_{CH_4} CH₄ density (0.00067 t/m³ at room temperature (20 °C) and 1 atm pressure)

$B_{0,LT}$	Maximum methane producing potential of the volatile solid generated, in m^3CH_4/kg_dm , by animal type LT
N_{LT}	Annual average number of animals of type LT estimated as per equation (5.a) or (5.b), expressed in numbers
$VS_{LT,y}^s$	Annual volatile solids from livestock LT, on a dry matter weight basis (kg-dm/year)
$MS\%_j$	Fraction of manure handled in system j
MCF_d	Methane conversion factor (MCF) assumed to be equal to 1

Emission Reduction

The emission reduction ER_y by the project activity during a given year y is the difference between the baseline emissions (BE_y) and the sum of project emissions (PE_y) and Leakage, as follows:

$$ER_y = BE_y - PE_y - LE_y \tag{29}$$

Further, in estimating emissions reduction for claiming certified emissions reductions, if the calculated CH4 baseline emissions from anaerobic lagoons are higher than the measured CH4 generated in the anaerobic digester in the project situation (this is calculated as product of biogas flow at the digester outlet and methane fraction in the biogas), then the latter shall be used to calculate the emissions reduction for claiming certified emissions reductions. Therefore, the actual methane captured from an anaerobic digester shall be compared to the $(BE_{CH_4,y} - PE_{AD,y} - PE_{PL,y})$ and if found lower, then $(BE_{CH_4,y} - PE_{AD,y} - PE_{PL,y})$ (which is a component of $BE_y - PE_y$)in equation (29) is replaced by actual methane captured.

Data and parameters not monitored

ID Number:	1
Parameter:	$R_{VS,n}$
Data unit:	Fraction
Description:	VS degradation factor
Source of data:	Refer to Annex 1
Measurement procedures (if any):	Archive electronically during project plus 5 years
Any comment:	Estimated from Table provided in Annex 1. The most conservative value for the given technology must be used.

ID Number:	2
Parameter:	$EF_{N_2O,D,j}, EF_{N_2O,ID,j}$
Data unit:	kg N2O-N/ kg N and kg N2O-N/ kg NH3-N and NOX-N
Description:	N2O emission factors (direct and indirect emissions) used in equation 14 and 15
Source of data:	IPCC 2006 Guidelines
Measurement procedures (if any):	Archive electronically during project plus 5 years
Any comment:	IPCC 2006 default values may be used, if country specific or region specific data are not available



ID Number:	3
Parameter:	F_{gasm}
Data unit:	Fraction
Description:	Fraction of N lost due to volatilization
Source of data:	IPCC 2006 Guidelines
Measurement procedures (if any):	Archive electronically during project plus 5 years
Any comment:	IPCC 2006 default values can be used

ID Number:	4
Parameter:	EF_1, EF_4, EF_5
Data unit:	kg N ₂ O-N/ kg N for EF_1, EF_5 and kg N ₂ O-N/ kg NH ₃ -N and NO _x -N for EF_4
Description:	N ₂ O emission factor from soil and runoff water
Source of data:	IPCC 2006 Guidelines
Measurement procedures (if any):	Archive electronically during project plus 5 years
Any comment:	IPCC 2006 default values may be used, if country specific or region specific data are not available

ID Number:	5
Parameter:	F_{leach}
Data unit:	Fraction
Description:	Fraction of N leached
Source of data:	IPCC 2006 Guidelines
Measurement procedures (if any):	Archive electronically during project plus 5 years
Any comment:	IPCC 2006 default values can be used

ID Number:	6
Parameter:	$CEF_{\text{Bl, therm,y}}$
Data unit:	tCO ₂ /MJ
Description:	Emission factor of baseline heat use
Source of data:	Refer to baseline methodology
Measurement procedures (if any):	Archive electronically during project plus 5 years
Any comment:	Calculated as per procedure described in the baseline methodology

ID Number:	7
Parameter:	$EG_{\text{Bl,y}}$
Data unit:	MWh
Description:	Electricity consumption by Baseline AWMS
Source of data:	Project proponents
Measurement procedures (if any):	Archive electronically for the duration of project plus 5 years
Any comment:	Estimation is based on three years data prior to start of the project. Electricity meters will undergo maintenance/calibration subject to appropriate industry standards. The accuracy of the meter readings will be verified by receipts issued by the purchasing power company. Uncertainty of the meters to be obtained from the manufacturers. This uncertainty to be included in a conservative manner while calculating CERs and procedure for doing so should be described in the CDM-PDD.



ID Number:	8
Parameter:	nd_y
Data unit:	Number
Description:	Number of days treatment plant was operational in year y
Source of data:	Project proponents
Measurement procedures (if any):	Archive electronic for the duration of project plus 5 yrs
Any comment:	---

ID Number:	9
Parameter:	$HG_{BL,y}$
Data unit:	MJ
Description:	Heat used by baseline AWMS
Source of data:	Project proponents
Measurement procedures (if any):	Archive electronic for the duration of project plus 5 yrs
Any comment:	At start of project. Fuel purchase records to be cross checked with estimates. Estimation is based on three years data prior to start of the project.

ID Number:	10
Parameter:	$MS\%_{BL,j}$
Data unit:	Fraction
Description:	Fraction of manure handled in system j in the baseline
Source of data:	Project proponents
Measurement procedures (if any):	Archive electronically during project plus 5 years
Any comment:	---

ID Number:	11
Parameter:	GWP_{CH_4}
Data unit:	tCO_2e/tCH_4
Description:	Global warming potential for CH_4
Source of data:	IPCC
Measurement procedures (if any):	21 for the first commitment period. Shall be updated according to any future COP/MOP decisions.
Any comment:	

ID Number:	12
Parameter:	GWP_{N_2O}
Data unit:	tCO_2e/tN_2O
Description:	Global warming potential for N_2O
Source of data:	IPCC
Measurement procedures (if any):	310 for the first commitment period. Shall be updated according to any future COP/MOP decisions.
Any comment:	



ID Number:	13
Parameter:	D_{CH_4}
Data unit:	t/m^3
Description:	Density of methane
Source of data:	Technical literature
Measurement procedures (if any):	Archive electronically during project plus 5 years
Any comment:	0.00067 t/m^3 at room temperature 20°C and 1 atm pressure

ID Number:	14
Parameter:	MCF_d
Data unit:	---
Description:	Methane conversion factor for leakage calculation assumed to be equal 1
Source of data:	See Leakage section
Measurement procedures (if any):	Archive electronically during project plus 5 years
Any comment:	---

ID Number:	15
Parameter:	$CF_{N_2O-N,N}$
Data unit:	---
Description:	Conversion factor = 44/28
Source of data:	Technical literature
Measurement procedures (if any):	Archive electronically during project plus 5 years
Any comment:	---

Monitoring Methodology

In this methodology, monitoring comprises several activities.

The monitoring plan should include on site inspections for each individual farm included in the project boundary where the project activity is implemented for each verification period.

Baseline emissions:

- Diagrammatic representation of animal waste management system existing on the project site prior to project implementation;
- Parameters MCF , B_o , and R_{VS} for estimating methane emissions from AWMS in the baseline;
- EF_{N_2O} and R_N for estimating nitrogen emission from AWMS in the baseline;
- Ambient temperature at the AWMS site;
- Amount of electricity used for the operation of the AWMS in the baseline;
- Amount of fossil fuel used for the operation of the AWMS in the baseline;
- Biogas based electricity exported to the grid, needs to be monitored only if emissions reduction for electricity generation from biogas are claimed;
- Data and parameters for estimating heat and electricity emission factors.

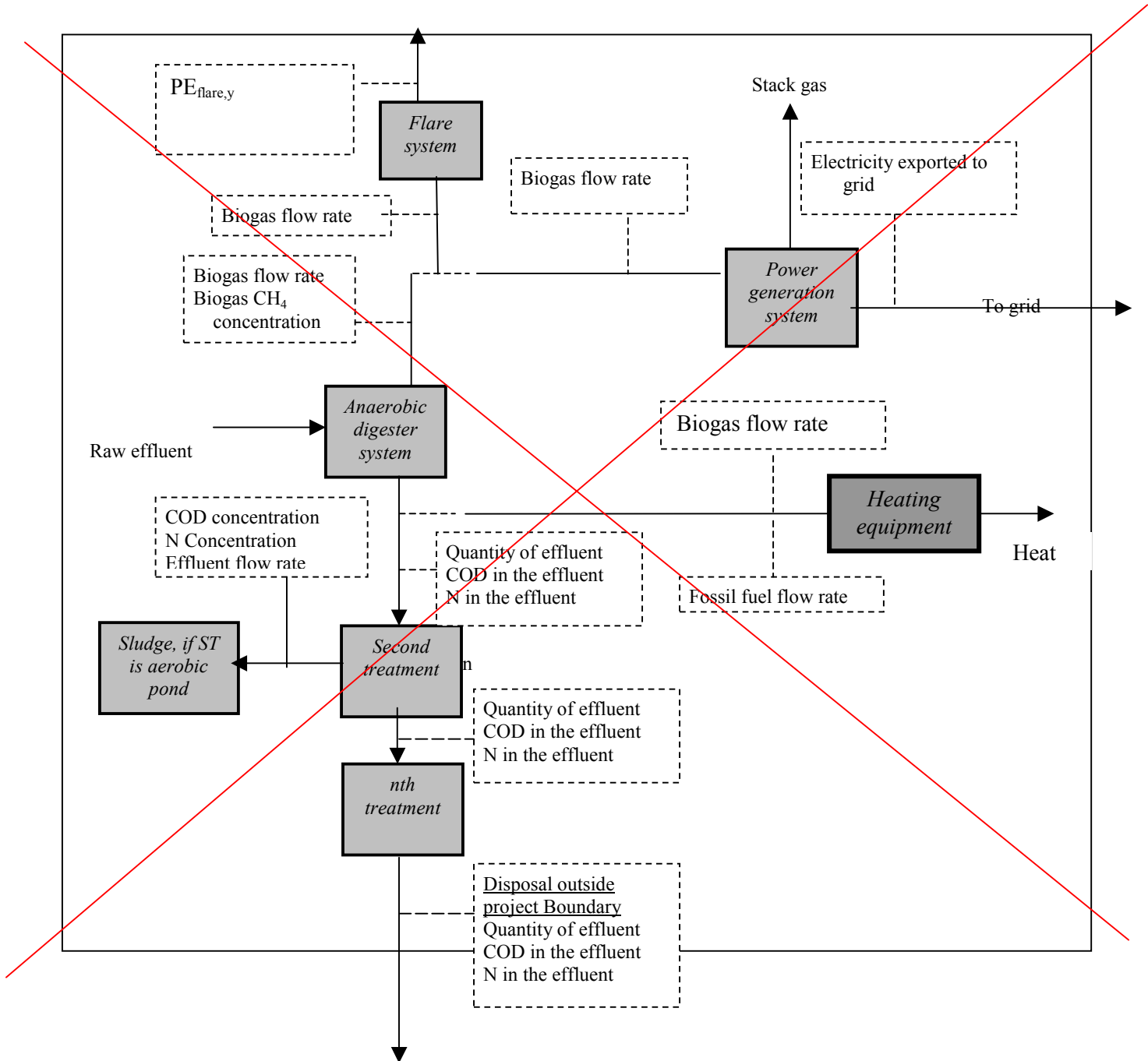
*Project emissions:*

- The livestock populations by different livestock types. This includes the number of heads of each population and the average animal weight in each population;
- Parameters MCF, B_{0s} , and R_{VS} for estimating methane emissions from AWMSs in the project case;
- EF_{N_2O} and R_N for estimating nitrogen emission from AWMS in the baseline;
- The default volatile solid excretion values or other parameters required for estimating the volatile solids. If dietary intake method is used, the feed intake of animals and its energy will be monitored;
- Leakage from anaerobic digester, if used. The default value is 15%, but in case project participants use a lower value, the appropriate measurement to support the lower value shall be monitored and reported;
- The default nitrogen excretion per animal or parameters required to estimate nitrogen excretion. If N intake method is used the amount of dry matter intake by livestock shall be monitored.
- Amount of electricity used in the project case. If electricity consumption is measured in the project, then project proponents may use the “Tool to calculate project emissions from electricity consumption”;
- Fuel consumption for generation of heat used in the project case. Calculated following the latest version of “Tool to calculate project or leakage CO₂ emissions from fossil fuel combustion”.
- Flow of biogas to the flare, heat generation, and electricity generation. In the case where biogas is just flared, one flow meter can be used provided that the meter used is calibrated periodically by an officially accredited entity;
- Concentration of methane in biogas at outlet of anaerobic digester, this shall be measured on wet basis;
- The parameters used for determining the project emissions from flaring of the residual gas stream in year y ($PE_{flare,y}$) should be monitored as per the “Tool to determine project emissions from flaring gases containing Methane”;
- Biogas leakage in project: through leaks in the pipeline during transportation of biogas.



Leakage:

- Nitrogen concentration and COD in waste water/sludge disposed outside the project boundary.



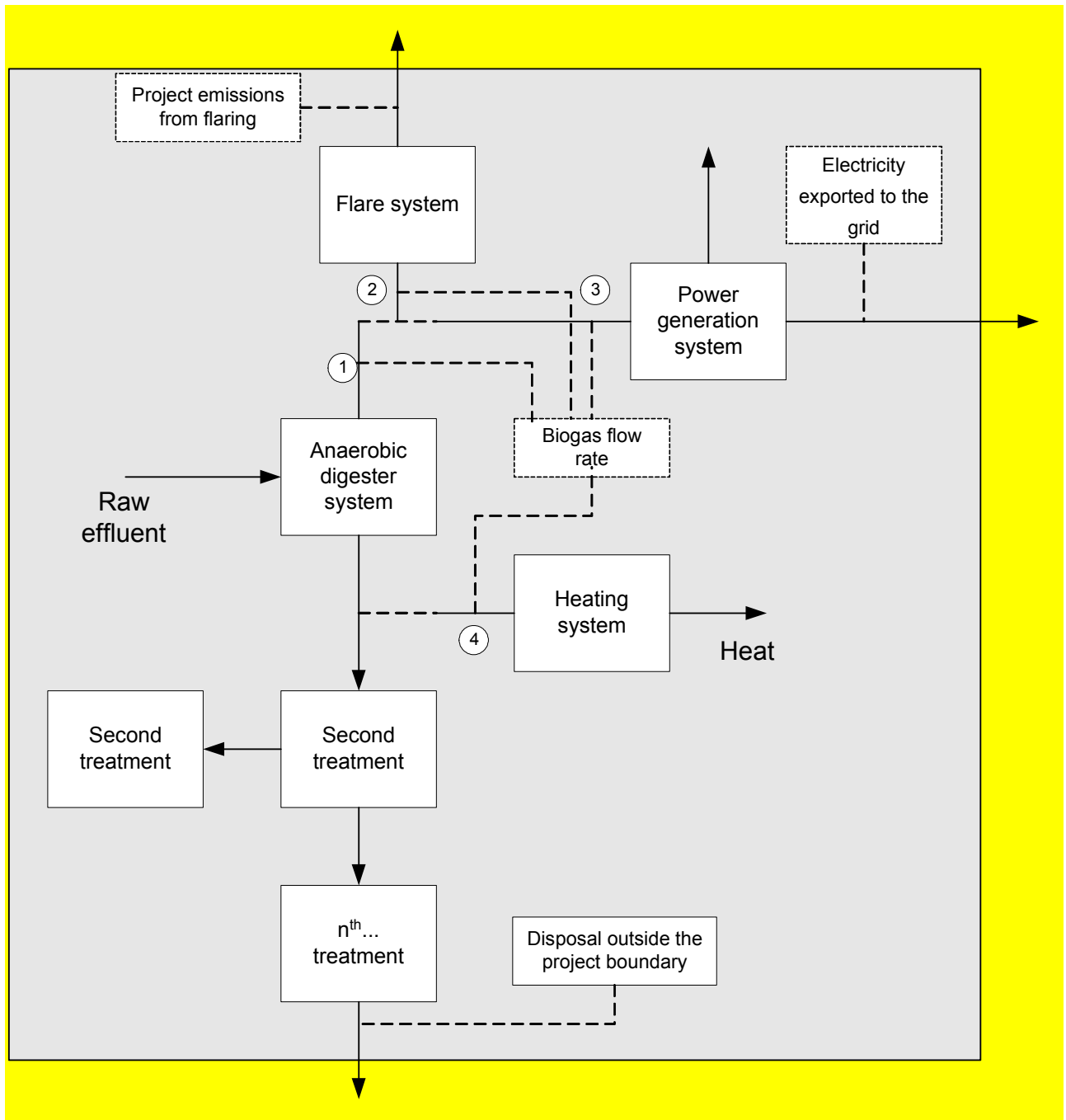


Figure 2: Flow diagram and biogas flow measurement points of project activity

**Data and parameters monitored**

Data / Parameter:	MCF
Data unit:	Fraction
Description:	Methane correction factor
Source of data:	IPCC 2006 Guidelines
Measurement procedures (if any):	Archive electronically during project plus 5 years
Monitoring frequency:	Annually
QA/QC procedures:	---
Any comment:	The factor MCF is taken from IPCC 2006 guidelines. If annual average temperature is lower than 10 °C and higher than 5 °C, Annual MCF should be estimated using linear interpolation assuming MCF=0 at annual average temperature of 5 °C.

Data / Parameter:	MCF _{sl}
Data unit:	Fraction
Description:	Methane correction factor
Source of data:	IPCC 2006 Guidelines
Measurement procedures (if any):	Archive electronically during project plus 5 years
Monitoring frequency:	Annually
QA/QC procedures:	---
Any comment:	The factor MCF is taken from IPCC 2006 guidelines. If annual average temperature is lower than 10 °C and higher than 5 °C, Annual MCF should be estimated using linear interpolation assuming MCF=0 at annual average temperature of 5 °C.

Data / Parameter:	B _{0,LT}
Data unit:	Fraction
Description:	Maximum methane production
Source of data:	Technical literature
Measurement procedures (if any):	Archive electronically during project plus 5 years
Monitoring frequency:	Annually
QA/QC procedures:	---
Any comment:	The value is taken from published sources. The parameter value should be updates on latest available public data source



Data / Parameter:	$VS_{LT,y}$
Data unit:	kg dry matter/animal/year
Description:	Volatile solid excretion per animal per day
Source of data:	Project proponents
Measurement procedures (if any):	Archive electronically during project plus 5 years
Monitoring frequency:	Annually, estimated or based on published information such as IPCC
QA/QC procedures:	---
Any comment:	If it is required to use developed country VS values, the following should be monitored: - Genetic source of the production operations livestock originate from an Annex I Party; - The formulated feed rations (FFR). If equation 4 is used to estimate the value, $VS_{default}$ (kg-dm/animal/day, Default average animal weight of a defined population in kg from where the data on $VS_{default}$ is sourced (IPCC 2006 or US-EPA, which ever is lower) shall be recorded and archived .

Data / Parameter:	$CEF_{Bl,elec,y}$
Data unit:	tCO ₂ /MWh
Description:	Emission factor of baseline electricity use
Source of data:	Refer to baseline methodology
Measurement procedures (if any):	Archive electronically during project plus 5 years
Monitoring frequency:	At start of project
QA/QC procedures:	---
Any comment:	Calculated as per procedure described in the baseline methodology

Data / Parameter:	CEF_{grid}
Data unit:	tCO ₂ /MWh
Description:	Emission factor of exported electricity
Source of data:	Refer to baseline methodology
Measurement procedures (if any):	Archive electronically during project plus 5 years
Monitoring frequency:	Annually
QA/QC procedures:	---
Any comment:	Calculated as per procedure described in the baseline methodology

Data / Parameter:	LF_{AD}
Data unit:	Fraction
Description:	Fraction of methane leakage from anaerobic digester
Source of data:	IPCC 2006 Guidelines
Measurement procedures (if any):	Archive electronically during project plus 5 years
Monitoring frequency:	Annually
QA/QC procedures:	---
Any comment:	IPCC default of 0.15 or less if documented evidence can be provided (to be checked by DOE)



Data / Parameter:	$R_{N,n}$
Data unit:	Fraction
Description:	Nitrogen degradation factor
Source of data:	Refer to Annex 1
Measurement procedures (if any):	Archive electronically during project plus 5 years
Monitoring frequency:	Annually
QA/QC procedures:	---
Any comment:	Estimated from Table provided in Annex 1. The most conservative value for the given technology must be used.

Data / Parameter:	Type
Data unit:	---
Description:	Type of barn and AWMS
Source of data:	Project proponents
Measurement procedures (if any):	Archive electronically during project plus 5 years
Monitoring frequency:	
QA/QC procedures:	---
Any comment:	Barn and AWMS layout and configuration

Data / Parameter:	CP
Data unit:	%
Description:	Crude protein percent
Source of data:	Project proponents
Measurement procedures (if any):	Archive electronically during project plus 5 years
Monitoring frequency:	Annually
QA/QC procedures:	---
Any comment:	---

Data / Parameter:	GE
Data unit:	MJ/d
Description:	Gross energy intake of the animal
Source of data:	Project proponents
Measurement procedures (if any):	Archive electronically during project plus 5 years
Monitoring frequency:	Annually
QA/QC procedures:	---
Any comment:	---



Data / Parameter:	T
Data unit:	°C
Description:	Annual Average ambient temperature at Project site
Source of data:	Project proponents
Measurement procedures (if any):	Archive electronically during project plus 5 years
Monitoring frequency:	Monthly
QA/QC procedures:	---
Any comment:	Used to select the annual MCF from IPCC 2006 guidelines

Data / Parameter:	EG _{d,y}
Data unit:	MWh
Description:	Electricity exported to grid
Source of data:	Project proponents
Measurement procedures (if any):	Archive electronically during project plus 5 years
Monitoring frequency:	Annual
QA/QC procedures:	Electricity meters will undergo maintenance/calibration subject to appropriate industry standards. The accuracy of the meter readings will be verified by receipts issued by the purchasing power company. Uncertainty of the meters to be obtained from the manufacturers. This uncertainty to be included in a conservative manner while calculating CERs and procedure for doing so should be described in the CDM-PDD.
Any comment:	---

Data / Parameter:	Regulations
Data unit:	---
Description:	Existence and enforcement of relevant regulation
Source of data:	Project proponents
Measurement procedures (if any):	---
Monitoring frequency:	At start of crediting period
QA/QC procedures:	Quality control for the existence and enforcement of relevant regulations and incentives is beyond the bounds of the project activity. Instead, the DOE will verify the evidence collected.
Any comment:	---

Data / Parameter:	N _{da}
Data unit:	Number
Description:	Number of days animal is alive in the farm in the year y
Source of data:	Project proponents
Measurement procedures (if any):	Archive electronically during project plus 5 years
Monitoring frequency:	Monthly
QA/QC procedures:	---
Any comment:	The PDD should describe the system on monitoring the number of livestock population. The consistency between the value and indirect information (records of sales, records of food purchases) should be assessed.



Data / Parameter:	N_p
Data unit:	Number
Description:	Number of animals produced annually of type LT for the year y
Source of data:	Project proponents
Measurement procedures (if any):	Archive electronically during project plus 5 years
Monitoring frequency:	Monthly
QA/QC procedures:	---
Any comment:	The PDD should describe the system on monitoring the number of livestock population. The consistency between the value and indirect information (records of sales, records of food purchases) should be assessed.

Data / Parameter:	W_{site}
Data unit:	kg
Description:	Weight of livestock
Source of data:	Project proponents
Measurement procedures (if any):	Archive electronically during project plus 5 years
Monitoring frequency:	Monthly
QA/QC procedures:	---
Any comment:	The PDD should describe the system on monitoring the weight of livestock

Data / Parameter:	F_{AD}
Data unit:	Fraction
Description:	Fraction of volatile solids directed to anaerobic digesters
Source of data:	Project proponents
Measurement procedures (if any):	Archive electronically during project plus 5 years
Monitoring frequency:	Annually
QA/QC procedures:	---
Any comment:	---

Data / Parameter:	F_{Aer}
Data unit:	Fraction
Description:	Fraction of volatile solids directed to aerobic treatment
Source of data:	Project proponents
Measurement procedures (if any):	Archive electronically during project plus 5 years
Monitoring frequency:	Annually
QA/QC procedures:	---
Any comment:	---



Data / Parameter:	V_f
Data unit:	m^3
Description:	Biogas flow
Source of data:	Project proponents
Measurement procedures (if any):	Archive electronically during project plus 5 years
Monitoring frequency:	Continuously by flow meter and reported cumulatively on weekly basis
QA/QC procedures:	Flow meters will undergo maintenance/calibration subject to appropriate industry standards. The frequency of calibration and control procedures would be different for each application. This maintenance/calibration practice should be clearly stated in the CDM-PDD.
Any comment:	The biogas flow will be measured at 4 points, as shown in the figure. But if the project participants can demonstrate that leakage in distribution pipeline is zero, it need be measured at any three points. The biogas flow to electricity or heat equipment in a moment can be considered destroyed, by monitoring that the equipment was working at this time.

Data / Parameter:	C_{CH_4}
Data unit:	Fraction
Description:	Methane fraction of biogas
Source of data:	Project proponents
Measurement procedures (if any):	Archive electronically during project plus 5 years. Shall be measured on wet basis.
Monitoring frequency:	To be decided by PPs
QA/QC procedures:	The project proponents shall define the variability of the concentration. They shall also define the error in estimate for different level of measurement frequency. The level of accuracy will be deducted from average concentration of measurement.
Any comment:	The project proponents shall define the variability of the concentration. They shall also define the error in estimate for different level of measurement frequency. The level of accuracy will be deducted from average concentration of measurement.

Data / Parameter:	$PE_{flare,y}$
Data unit:	tCO_{2e}
Description:	Project emissions from flaring of the residual gas stream in year y
Source of data:	
Measurement procedures (if any):	The parameters used for determining the project emissions from flaring of the residual gas stream in year y ($PE_{flare,y}$) should be monitored as per the “ <i>Tool to determine project emissions from flaring gases containing Methane</i> ”
Monitoring frequency:	
QA/QC procedures:	The parameters used for determining the project emissions from flaring of the residual gas stream in year y ($PE_{flare,y}$) should use the QA/QC procedures as per the “ <i>Tool to determine project emissions from flaring gases containing Methane</i> ”
Any comment:	---



Data / parameter:	$PE_{Elec,y}$
Data unit:	tCO ₂
Description:	Emissions from consumption of electricity in the project case in year <i>y</i> .
Source of data:	Calculated as per the “Tool to calculate project emissions from electricity consumption”. When using the tool $PE_{Elec,y} = PE_{EC,y}$.
Measurement procedures (if any):	As per the “Tool to calculate project emissions from electricity consumption”
Monitoring frequency:	As per the “Tool to calculate project emissions from electricity consumption”
QA/QC procedures:	As per the “Tool to calculate project emissions from electricity consumption”
Any comment:	---

Data / parameter:	$PE_{HEAT,i,y}$
Data unit:	tCO _{2e}
Description:	Project emissions from fossil fuel combustion in process <i>j</i> during the year <i>y</i>
Source of data:	Calculated as per the “Tool to calculate project or leakage CO ₂ emissions from fossil fuel combustion”. When using the tool $PE_{heat,i,y} = PE_{FC,i,y}$.
Measurement procedures (if any):	As per the “Tool to calculate project or leakage CO ₂ emissions from fossil fuel combustion”
Monitoring frequency:	As per the “Tool to calculate project or leakage CO ₂ emissions from fossil fuel combustion”
QA/QC procedures:	As per the “Tool to calculate project or leakage CO ₂ emissions from fossil fuel combustion”
Any comment:	---

Data / Parameter:	$CP_{i,y}$
Data unit:	MW
Description:	Rated capacity of electrical equipment <i>i</i> used for project activity in year <i>y</i>
Source of data:	Equipment at site
Measurement procedures (if any):	
Monitoring frequency:	Annually
QA/QC procedures:	---
Any comment:	This parameter is used in case the electricity consumption is not measured

Data / Parameter:	N_{DM}
Data unit:	kg N20-N/KG effluent
Description:	N concentration in disposed manure
Source of data:	Project proponents
Measurement procedures (if any):	Archive electronically during project plus 5 years
Monitoring frequency:	Every batch disposed
QA/QC procedures:	---
Any comment:	---



Data / Parameter:	Q_{DM}
Data unit:	kg
Description:	Mass of manure disposed outside project boundary
Source of data:	Project proponents
Measurement procedures (if any):	Archive electronically during project plus 5 years
Monitoring frequency:	Every batch disposed
QA/QC procedures:	---
Any comment:	---

Data / Parameter:	$MS\%_i$
Data unit:	Fraction
Description:	Fraction of manure handled in system j in project activity
Source of data:	Project proponents
Measurement procedures (if any):	Archive electronically during project plus 5 yrs
Monitoring frequency:	Annually
QA/QC procedures:	---
Any comment:	---

Data / Parameter:	$NEX_{LT,y}$
Data unit:	kg N/animal/year
Description:	Annual average nitrogen excretion per head of a defined livestock population in kg N/animal/year estimated as described in Annex 2
Source of data:	Refer to Annex 2
Measurement procedures (if any):	Archive electronically during project plus 5 yrs
Monitoring frequency:	Annually
QA/QC procedures:	---
Any comment:	---

Data / Parameter:	GE_{LT}
Data unit:	MJ/day
Description:	Daily average gross energy intake in MJ/day
Source of data:	Project proponents
Measurement procedures (if any):	Archive electronically during project plus 5 yrs
Monitoring frequency:	Daily
QA/QC procedures:	---
Any comment:	---



Data / Parameter:	DE _{LT}
Data unit:	%
Description:	Digestible energy of the feed in percent (IPCC 2006 defaults available)
Source of data:	---
Measurement procedures (if any):	Archive electronically during project plus 5 yrs
Monitoring frequency:	---
QA/QC procedures:	---
Any comment:	---

Data / Parameter:	UE
Data unit:	Fraction of GE
Description:	Urinary energy expressed as fraction of GE
Source of data:	---
Measurement procedures (if any):	Archive electronically during project plus 5 yrs
Monitoring frequency:	---
QA/QC procedures:	---
Any comment:	---

Data / Parameter:	ASH
Data unit:	Fraction of the dry matter feed intake
Description:	Ash content of the manure calculated as a fraction of the dry matter feed intake
Source of data:	---
Measurement procedures (if any):	Archive electronically during project plus 5 years
Monitoring frequency:	---
QA/QC procedures:	---
Any comment:	---

Data / Parameter:	ED _{LT}
Data unit:	MJ/kg
Description:	Energy density of the feed in MJ/kg fed to livestock type LT
Source of data:	
Measurement procedures (if any):	Archive electronically during project plus 5 years. The project proponent will record the composition of the feed to enable the DOE to verify the energy density of the feed.
Monitoring frequency:	---
QA/QC procedures:	---
Any comment:	---



Data / Parameter:	N_{AA}
Data unit:	
Description:	Daily stock of animals in the farm, discounting dead and discarded animals
Source of data:	Daily counting of alive animals in the farm, discounting dead animals and animals discarded from the productive process from the daily stock
Measurement procedures (if any):	Archive electronically during project plus 5 yrs
Monitoring frequency:	Daily
QA/QC procedures:	Project participant should provide a for the measurement in the PDD
Any comment:	The PDD should describe the system on monitoring stock of animals



Annex 1: Anaerobic Unit Process Performance

Table 8-10. Anaerobic Unit Process Performance

Anaerobic Treatment	HRT	COD	TS	VS	TN	P	K
	days	Percent Reduction					
Pull plug pits	4-30	—	0-30	0-30	0-20	0-20	0-15
Underfloor pit storage	30-180	—	30-40	20-30	5-20	5-15	5-15
Open top tank	30-180	—	—	—	25-30	10-20	10-20
Open pond	30-180	—	—	—	70-80	50-65	40-50
Heated digester effluent prior to storage	12-20	35-70	25-50	40-70	0	0	0
Covered first cell of two cell lagoon	30-90	70-90	75-95	80-90	25-35	50-80	30-50
One-cell lagoon	>365	70-90	75-95	75-85	60-80	50-70	30-50
Two-cell lagoon	210+	90-95	80-95	90-98	50-80	85-90	30-50

HRT=hydraulic retention time; COD=chemical oxygen demand; TS=total solids; VS=volatile solids; TN=total nitrogen; P=phosphorus; K= potassium; — =data not available.

Source: Moser and Martin, 1999

Annex 2: Procedure for estimating NEX

$$NEX = N_{intake} * (1 - N_{retention}) \quad (1)$$

Where:

N_{intake} The annual N intake per animal – kg N/animal-year
 $N_{retention}$ The portion of that N intake that is retained in the animal. (Default values are reported in Table 10.20 in IPCC 2006 guidelines, volume 4, chapter 10)

$$N_{intake} \text{ may be calculated using: } N_{intake} = \left(\frac{GE}{18.45} \right) * \left(\frac{CP/100}{6.25} \right) \quad (1a)$$

Where:

CP Crude percent of protein (percent)
 GE Gross energy intake of the animal, in enteric model, based on digestible energy, milk production, pregnancy, current weight, mature weight, rate of weight gain, and IPCC constants, MJ day⁻¹
18.45 Conversion factor for dietary GE per kg of dry matter (MJ/kg). This value is relatively constant across a wide range of forage and grain-based feeds commonly consumed by livestock
6.25 Conversion from kg of dietary protein to kg of dietary N, kg feed protein (kg N)⁻¹

In absence of availability of project specific information on Protein intake, which should be justified in the CDM-PDD, site-specific national or regional data should be used for the nitrogen excretion NEX, if available. In the absence of such data, default values from table 10.19 of the IPCC 2006, volume 4, chapter 10.) may be used and should be corrected for the animal weight at the project site in the following way:

$$NEX_{site} = \frac{W_{site}}{W_{default}} \cdot NEX_{IPCCdefault} \quad (2)$$

Where:

NEX_{site} Is the adjusted annual average nitrogen excretion per head of a defined livestock population in kg N/animal/year
 W_{site} Is the average animal weight of a defined population at the project site in kg
 $W_{default}$ Is the default average animal weight of a defined population in kg
 $NEX_{IPCCdefault}$ Is the default value (IPCC 2006 or US-EPA) for the nitrogen excretion per head of a defined livestock population in kg N/animal/year



Annex 3: Table 10.17 of IPCC 2006

TABLE 10.17 MCF VALUES BY TEMPERATURE FOR MANURE MANAGEMENT SYSTEMS																					
System ^a	MCFs by Average Annual Temperature (°C)																			Source and Comments	
	Cool					Temperate									Warm						
	≤ 10	11	12	13	14	15	16	17	18	19	20	21	22	23	24	25	26	27	≥ 28		
Pasture/Range/Paddock	1.0%					1.5%									2.0%					Judgement of IPCC Expert Group in combination with Hashimoto and Steed (1994).	
Daily Spread	0.1%					0.5%									1.0%					Hashimoto and Steed (1993).	
Solid Storage	2.0%					4.0%									5.0%					Judgement of IPCC Expert Group in combination with Amon, et. al (2001), which shows emissions of approximately 2% in winter and 4% in summer. Warm climate is based on judgement of IPCC Expert Group and Amon, et. al (1998).	
Dry Lot	1.0%					1.5%									2.0%					Judgement of IPCC Expert Group in combination with Hashimoto and Steed (1994).	
Liquid/Slurry	With natural crust cover	10%	11%	13%	14%	15%	17%	18%	20%	22%	24%	26%	29%	31%	34%	37%	41%	44%	48%	50%	Judgement of IPCC Expert Group in combination with Mangino et. al (2001) and Sommer (2000). The estimated reduction due to the crust cover (40%) is an annual average value based on a limited data set and can be highly variable dependent on temperature, rainfall, and composition. When slurry tanks are used as fed-batch storage/digesters, MCF should be calculated according to Formula 1.
	Without natural crust cover	17%	19%	20%	22%	25%	27%	29%	32%	35%	39%	42%	46%	50%	55%	60%	65%	71%	78%	80%	Judgement of IPCC Expert Group in combination with Mangino et. al (2001). When slurry tanks are used as fed-batch storage/digesters, MCF should be calculated according to Formula 1.



TABLE 10.17 (CONTINUED)																				
MCF VALUES BY TEMPERATURE FOR MANURE MANAGEMENT SYSTEMS																				
System ^a	MCFs by Average Annual Temperature (°C)																		Source and Comments	
	Cool					Temperate										Warm				
	≤ 10	11	12	13	14	15	16	17	18	19	20	21	22	23	24	25	26	27		≥ 28
Uncovered Anaerobic Lagoon		66%	68%	70%	71%	73%	74%	75%	76%	77%	77%	78%	78%	78%	79%	79%	79%	80%	80%	Judgement of IPCC Expert Group in combination with Mangino et. al (2001). Uncovered lagoon MCFs vary based on several factors, including temperature, retention time, and loss of volatile solids from the system (through removal of lagoon effluent and/or solids).
Pit Storage below animal confinements	< 1 month	3%					3%										30%			Judgement of IPCC Expert Group in combination with Moller, et. al (2004) and Zeeman (1994). Note that the ambient temperature, not the stable temperature is to be used for determining the climatic conditions. When pits used as fed-batch storage/digesters, MCF should be calculated according to Formula 1.
	> 1 month	17%	19%	20%	22%	25%	27%	29%	32%	35%	39%	42%	46%	50%	55%	60%	65%	71%	78%	80%



History of the document

Version	Date	Nature of Revision
04	EB 39, Annex 5, 16 May 2008	<ul style="list-style-type: none">• Inclusion of new formula to determine the annual average number of animals (N_{LT})• Reformat of the graphic in the monitoring section showing the points where the gas has to be measured
03	EB 35, Annex 9, 19 October 2007	Incorporation to the methodology of the following tools: <ul style="list-style-type: none">• Tool to calculate project or leakage CO₂ emissions from fossil fuel combustion• Tool to calculate project emissions from electricity consumption Addition of the formula to determine the annual average number of animals (N_{LT})
02	EB 28, Annex 12, 15 December 2006	<ul style="list-style-type: none">• Inclusion of the “Tool to determine project emissions from flaring gases containing Methane¹”• Replace of emissions Project emissions from flaring of the residual gas stream
01	EB 26, Annex 11, 29 September 2006	Initial adoption