



Annex 37

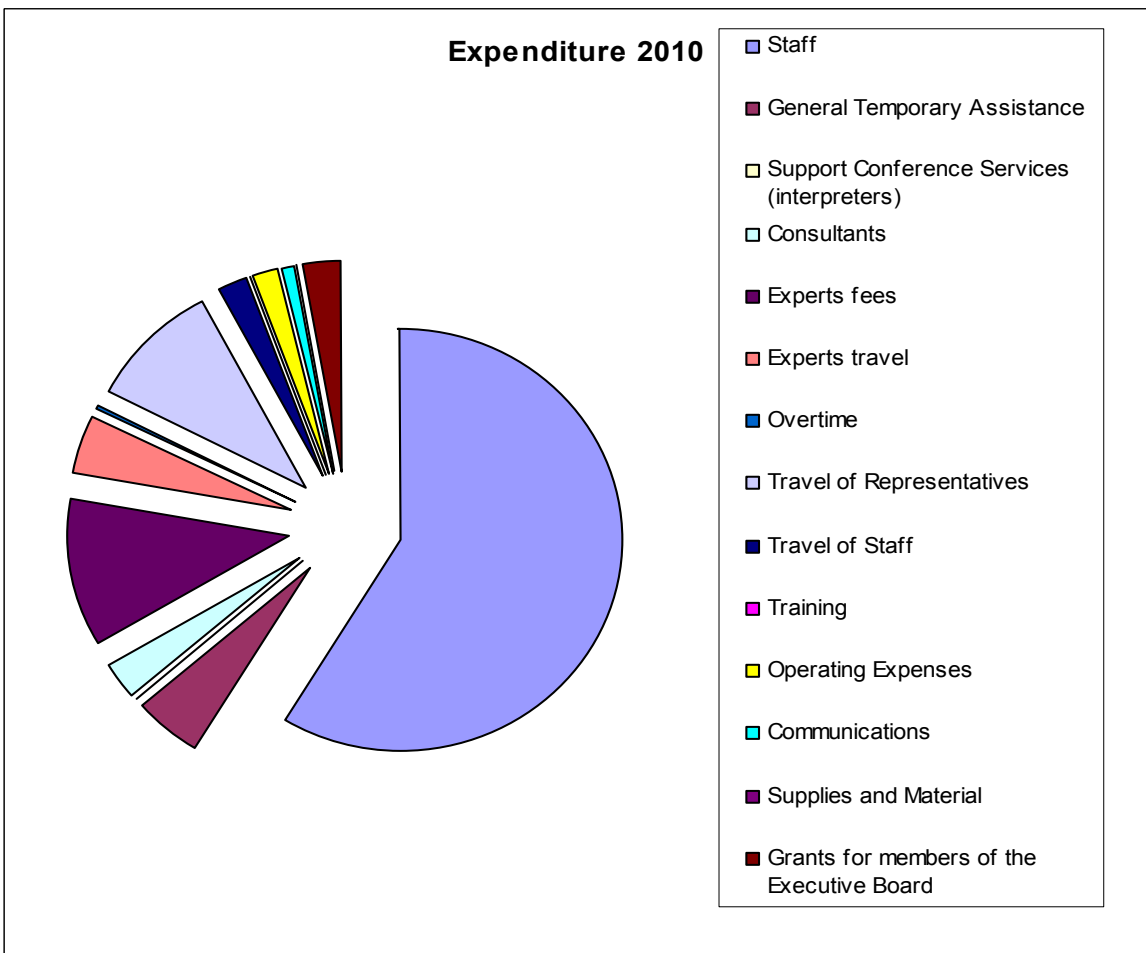
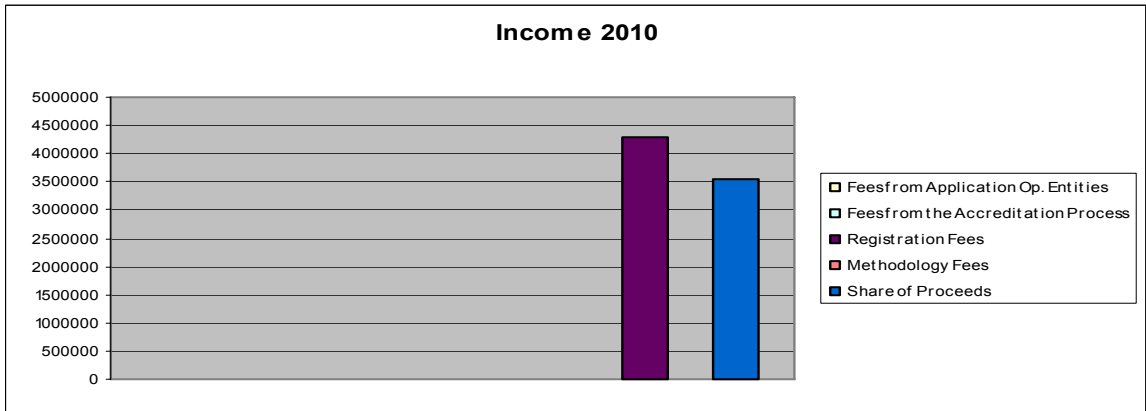
STATUS OF INCOME AND EXPENDITURE TO SUPPORT CDM ACTIVITIES
DURING THE 2010-2011 BIENNIUM (AS AT 23 MARCH 2010)***Table 1:** Income received in 2010 including carry-over from 2009 (in USD) as at 23 March 2010

Carry over figure from 2009		32,038,285
Fees from Application Op. Entities		0
Fees from the Accreditation Process		3,185
Registration Fees		4,301,418
Methodology Fees		11,910
Share of Proceeds		3,541,860
<i>Sub-Total (fees/SOPs)</i>		<i>7,858,373</i>
Total (fees/SOPs)		39,896,658

Table 2: SOP/Fee Expenditure in 2010 (in USD) as at 23 March 2010

Staff		3,002,135
General Temporary Assistance		263,151
Support Conference Services (interpreters)		0
Consultants		140,420
Experts fees		591,200
Experts travel		222,666
Overtime		6,277
Travel of Representatives		501,626
Travel of Staff		117,251
Training		2,756
Operating Expenses		104,135
Communications		32,397
Supplies and Material		0
Grants for members of the Executive Board		146,000
<i>Sub-total</i>		<i>5,130,014</i>
13% overheads		666,902
Total 2010		5,796,916

* Carry-over and expenditure figures are not final. Expenditure does not reflect "total cost of ownership" and other charges as no data is currently available.



**Table 3: Balance of income of SOP/fees still available (in USD) as at 23 March 2010**

Total revenue available		39,896,658
Less expenditure		5,796,916
Balance available		34,099,742

Note: Reserve of USD 45,000,000 and accrued interest of USD 3,099,055 from 2008-2009 are not included in the above table.

EB 53, Annex 37 26 March 2010	Decision Class: Operational Document Type: Information Note Business Function: Governance
----------------------------------	--