

CDM MAP 2010 | EB54, 24-28 May

**Presentation to EB54
On
The Draft CDM MAP**

John Kilani
Director,
SDM programme
UNFCCC

Thursday, 27 May 2010



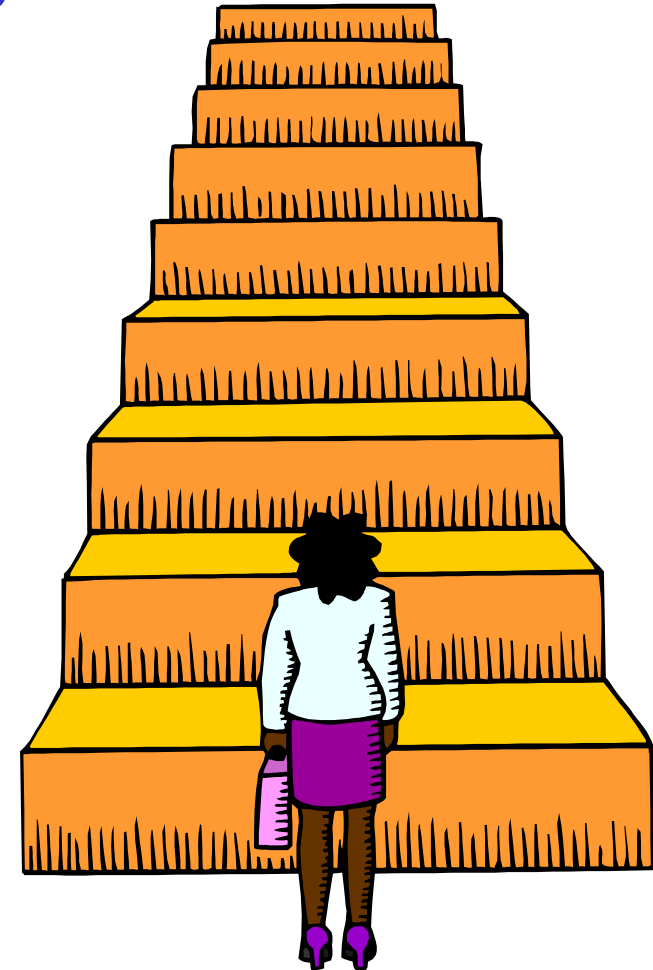
Draft CDM MAP 2010 | Context

- The next 8 months will very challenging.
- Building on the momentum of last year.
- Responding to requests from CMP5.
- High expectations from stakeholders.
 - Timely consideration of project submissions.
 - Strengthening relationship with stakeholders, in particular, DOEs.

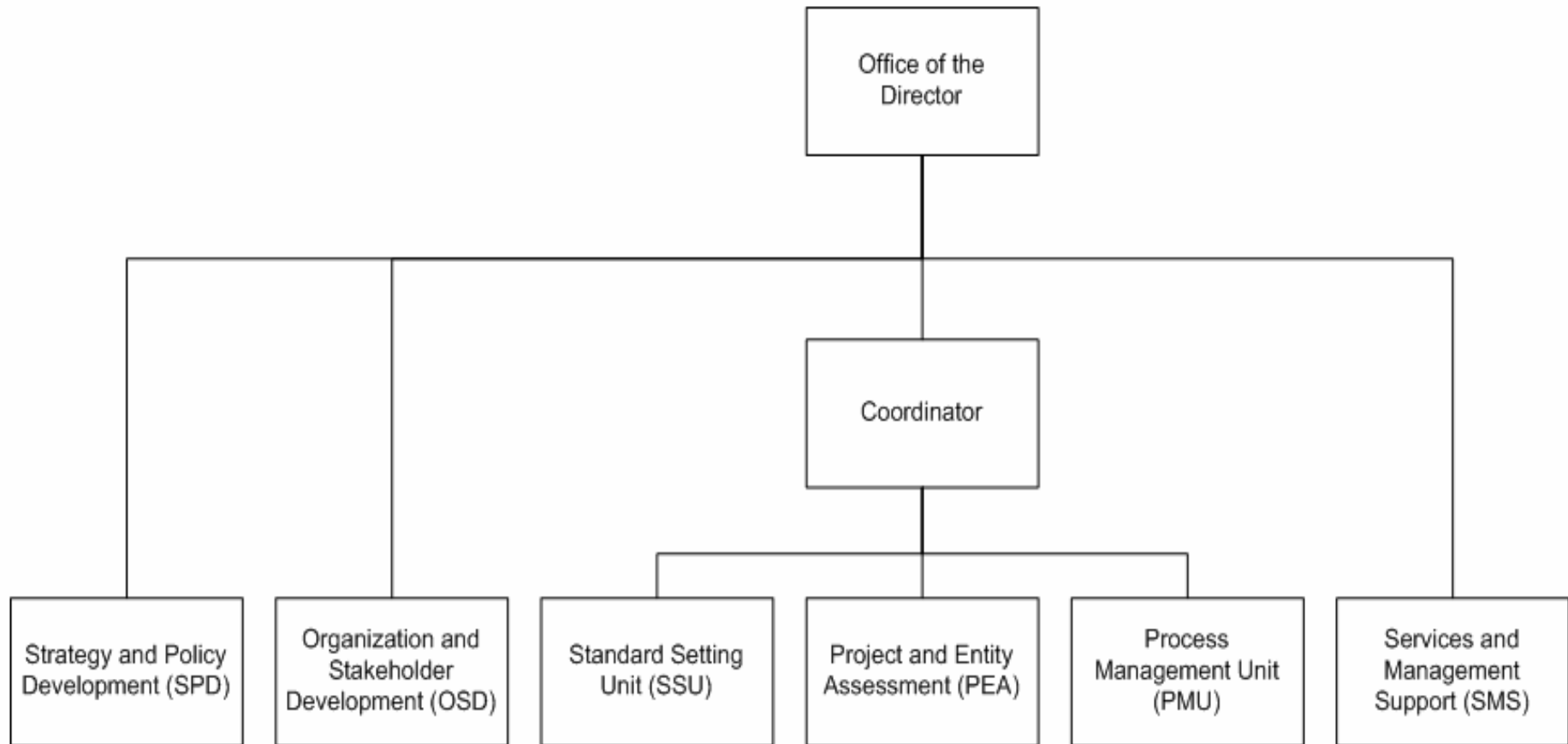


CDM MAP 2010 | Objectives

- To ensure that the EB, as the regulatory body, is supported effectively to deliver on the CMP mandates and to become more executive
- To allow the technical and process management expertise in the SDM teams to focus on the quality of their work
- To develop the skills of SDM staff and contribute to training of CDM stakeholders
- To enable stakeholders (DOEs, PPs) to understand the requirements of the Board
- To ensure that the EB and its support structure work collaboratively with DOEs to improve quality and performance



CDM MAP 2010 | Overview of SDM new Structure



CDM MAP 2010 | Four key aspects



- Alignment of the CDM and JI teams to leverage synergy between the work streams
- Aligning work according to functions rather than by topics and bodies
- Strengthening SDM's services and management support
- Strengthening support for developing the organization and stakeholders



CDM MAP 2010 | Coordination mechanisms



SDM Management Committee (SMC)

- Continue to support the Director
- Its planning and decision-making to be strengthened for more effective management
- Composition: Director (chair), Coordinator, Managers of SSU, PEA, PMU, OSD, SPD & SMS

Regulatory Bodies Committee (RBC)

- Responsible for managing the SDM's work for the regulatory Body
- Ensure appropriate forward planning and prioritization of activities
- Composition: Director, Coordinator, and Managers/Leaders of SSU, PEA, PMU (chair) and OSD

Operations Development Committee (ODC)

- Coordinate and supervise activities relating to improvements in operations
- Composition: OSD Lead (chair) and team leads in SSU, PEA and OSD



CDM MAP 2010 | Process followed



- The first draft CDM MAP developed for consideration at EB52 in February
- Development of workplan for each unit in the new structure
- Preparation of Appendix I to the draft CDM MAP document in line with workplans and comments from EB members
- Determination of level of resources required for the outputs in Appendix I



CDM MAP 2010 | Format

1. The 2010 MAP is designed based on 25 goal/objectives grouped according to the new 7 units. To each objective correspond targets, outputs and the human resources needed to achieve them and activities to be undertaken to reach the outputs.
2. The format of the 2010 MAPs will allow for a streamlined mechanism to monitor the achievement of the goal/objectives and associated targets, outputs and activities, and assess performance, facilitate reporting on a regular basis, and to take corrective actions in a dynamic manner.

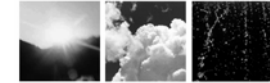


CDM MAP 2010 | Additional resources

Focal area	Professional staff (P)	General Service (G)	Total
Office of the Director	0	0	0
Strategy & Policy Dev Unit	0	0	0
Organization & Stakeholder Dev	6	3	9
Standard Setting Unit	1	0	1
Project & Entity Assessment	9	1	10
Process Management Unit	3	3	6
Services & Management Support	0	2	2
Total	19	9	28



CDM MAP 2010 | Budget Trend

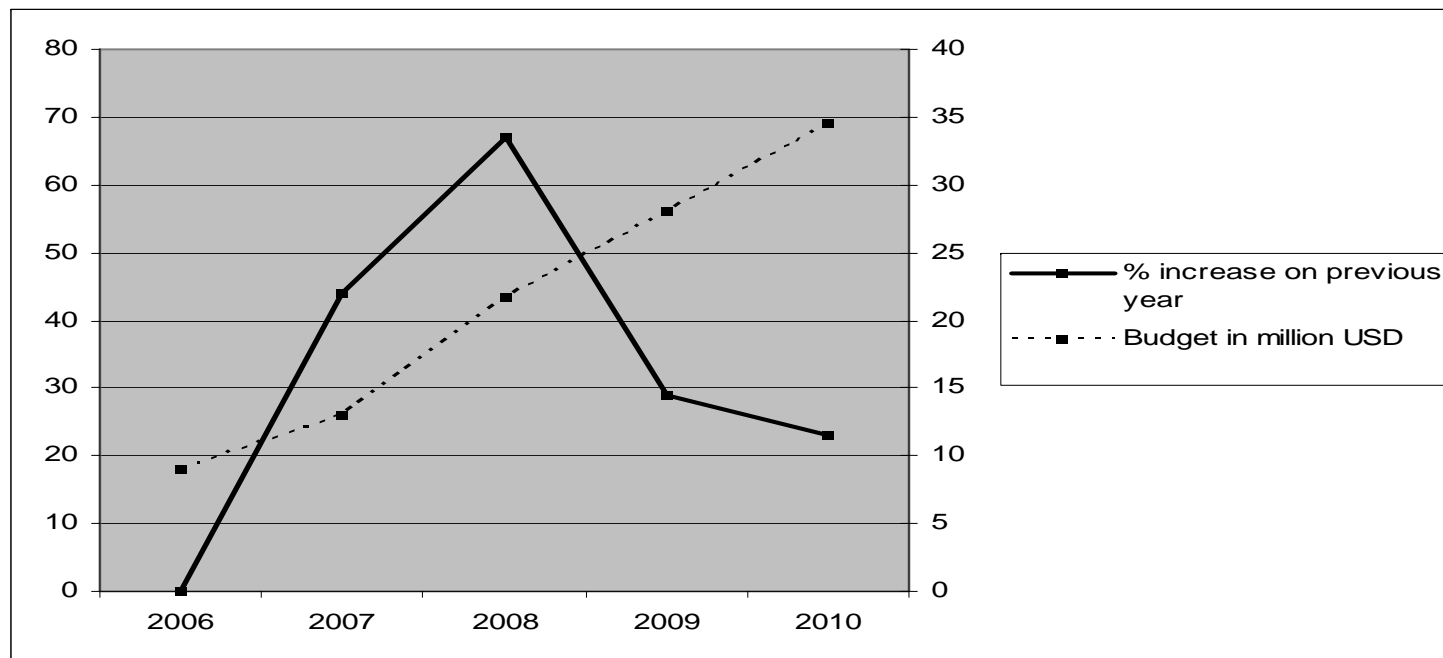


Budget trend (2006–2010)
(millions of United States dollars)

Year	2006	2007	2008	2009	2010*
Budget	9.0	13.0	21.7	28.1	34.5
% increase on previous year	-	44	67	29	23

* At EB52 the budget presented was USD 35.4 million

Budget shown as percentage increase against previous year



CDM MAP 2010 | Other highlights



Ways to assist teams in addressing short term fluctuations and backlogs.

Once resources approved at EB 52 are in place, estimated 1300 submissions can be processed during May-December

Additional resources 9 professional staff will be required to be in place as soon as possible to handle expected workload in 2011 – about 1900 cases.



This additional resources need to be in place by year end to handle the above anticipated number of cases in 2011.

Recruitment to fill vacant posts in CDM continues to be a high priority for the secretariat.



CDM MAP 2010 | EB54, 24-28 May 2007

Thank you

United Nations Framework Convention on Climate Change

