



Indicative simplified baseline and monitoring methodologies
for selected small-scale CDM project activity categories

Annex 25

GUIDELINES FOR DEMONSTRATING ADDITIONALITY OF RENEWABLE ENERGY PROJECTS <= 5 MW AND ENERGY EFFICIENCY PROJECTS WITH ENERGY SAVINGS <= 20 GWH PER YEAR, MICROSCALE PROJECT ACTIVITIES

(Version 02)

I. Background

1. The following paragraphs are quoted from decision 2/CMP.5 and 3/CMP.6- Further guidance relating to the clean development mechanism:

“24. Requests the Executive Board, starting at its next meeting, to further work and report to the Conference of the Parties serving as the meeting of the Parties to the Kyoto Protocol on the enhancement of objectivity and transparency in the approaches for demonstration and assessment of additionality and selection of the baseline scenario by means of the following activities:

(c) Establishment of simplified modalities for demonstrating additionality for project activities up to 5 megawatts that employ renewable energy as their primary technology and for energy efficiency project activities that aim to achieve energy savings at a scale of no more than 20 gigawatt hours per year;”

“38. welcomes the work of the CDM Executive Board on the establishment of simplified modalities for demonstrating additionality for project activities up to five megawatts that employ renewable energy as their primary technology and for energy efficiency project activities that aim to achieve energy savings at a scale of no more than 20 gigawatt hours per year.

39. requests the Board to continue to simplifying these modalities based on experience gained and to expand, as appropriate, their applicability to Type III projects that reduce emissions by less than 20,000 tonnes of carbon dioxide equivalent per annum and to report back to the Conference of the Parties serving as the meeting of the Parties to the Kyoto Protocol at its seventh session on the experience gained including the appropriateness of the threshold”

II. Guidelines

2. Project activities up to 5 megawatts that employ renewable energy as their primary technology¹ are additional if any one of the ~~below conditions~~ conditions below is ~~are~~ satisfied:²

- (a) The geographic location of the project activity is in one of the Least Developed Countries or the Small Island Countries (LDCs/SIDs) or in a special

¹ All technologies/measures included in approved Type I Small Scale CDM methodologies are eligible to be considered. Furthermore at its fifty-seventh meeting the Board clarified that all CDM project activities that meet the criteria specified in these guidelines are eligible to apply the guidelines irrespective of the scale of the approved CDM methodology applied to the project activity .

² Otherwise other means for demonstrating additionality shall be used (e.g. the tool “Tool for demonstration of additionality”, or attachment A of Appendix B of Modalities & Procedures of SSC CDM”)



Indicative simplified baseline and monitoring methodologies for selected small-scale CDM project activity categories

underdeveloped zone of the host country identified by the Government before 28 May 2010;

- (b) The project activity is an off grid activity supplying energy to households/communities (less than 12 hrs grid availability per 24 hrs day is also considered as ‘off grid’ for this assessment);
- (c) The project activity is **designed** for distributed energy generation **(not connected to a national or regional grid)**³ with both conditions (i) and (ii) satisfied ~~(see below)~~;
 - (i) Each of the independent subsystems/measures in the project activity is smaller than or equal to **1500750 kW** electrical⁴ installed capacity;
 - (ii) End users of the subsystems or measures are households/communities/SMEs.
- (d) The project activity employs specific renewable energy technologies/measures recommended by the host country DNA and approved by the Board to be additional in the host country (conditions apply: the total installed capacity of the technology/measure contributes less than or equal to 5% to national annual electricity generation).

3. Energy efficiency project activities⁵ that aim to achieve energy savings at a scale of no more than 20 gigawatt hours per year are **additional** if any **one** of the **conditions below** ~~of the below conditions~~ is satisfied:

- (a) The geographic location of the project activity is in LDCs/SIDs or special underdeveloped zones of the host country identified by the Government before 28 May 2010;
- (b) The project activity is an energy efficiency activity with both conditions (i) and (ii) satisfied ~~(see below)~~;
 - (i) Each of the independent subsystems/measures in the project activity achieves an estimated annual energy savings **of equal to or smaller than 600**⁶ megawatt hours; and
 - (ii) End users of the subsystems or measures are households/communities/SMEs.

4. Other project activities not included in paragraphs 2 or 3 above, i.e. Type III project activities⁷ that aim to achieve emissions reductions at a scale of no more than 20 ktCO₂e per year, are **additional** if any **one** of the following conditions is satisfied:

³ That means that projects applying AMS.I-D are not eligible.

⁴ Multiply by 3 to derive thermal units.

⁵ All technologies/measures included in approved Type II small scale CDM methodologies are eligible to be considered. Further the Board at its fifty-seventh meeting clarified that all CDM project activities that qualify the criteria specified in the guidelines are eligible to apply the guidelines irrespective of the scale of the approved CDM methodology applied to the project.

⁶ Multiply by 3 to derive thermal units.



Indicative simplified baseline and monitoring methodologies for selected small-scale CDM project activity categories

- (a) The geographic location of the project activity is a LDC/SID or special underdeveloped zone of the host country as identified by the Government before 28 May 2010;
- (b) The project activity is an emission reduction activity with both conditions (i) and (ii) satisfied (see below);
 - (i) Each of the independent subsystems/measures in the project activity achieves an estimated annual emission reduction equal to or less than 600 tCO₂e per year; and
 - (ii) End users of the subsystems or measures are households/communities/SMEs.

5. Project activities that meet the requirements specified in paragraph 2 or paragraph 3 or paragraph 4 above are termed ‘Microscale CDM project activities’.

6. ‘Project activity’ in paragraphs 2–4 means a small scale or large scale CDM project activity or a project activity under a programme of activities (CPA of a PoA).

7. In the case of bundled projects, ‘Project activity’ in paragraphs 2-4 refers to individual projects within the bundle and these guidelines are applied in conjunction with the “Guidelines on assessment of debundling for SSC project activities” (EB 54, annex 13) excluding paragraph 3 of section A⁸ of the latter guidelines.

8. Eligibility of project activities as microscale CDM project activities will be determined in accordance with the principles laid out in paragraph 3 and paragraph 4 of the “General Guidelines to SSC CDM methodologies” (version 16 or its update), i.e.:

- (a) Project activities remain under the thresholds defined above during each year of the crediting period and in cases where *ex ante* projected emissions reductions show an increase during the crediting period, project activities that go beyond the microscale limits in any year of the crediting period are not eligible;
- (b) Renewable energy projects that produce electrical, thermal and mechanical energy, and cogeneration projects are covered. Definitions provided for output capacity and guidelines provided for conversion from electrical to thermal units in paragraph 4 of the “General Guidelines to SSC CDM methodologies” (version 16 or its update) shall be used. Where applicable, additional guidelines provided in

⁷ All technologies/measures included in approved Type III small scale CDM methodologies are currently eligible to be considered, except for AMS-III.V “Decrease of coke consumption in blast furnace by installing dust/sludge recycling system in steel works”, AMS-III.P “Recovery and utilization of waste gas in refinery facilities”, AMS-III.Q “Waste Energy Recovery (gas/heat/pressure) Projects” and AMS-III.W “Methane capture and destruction in non-hydrocarbon mining activities”. In the latter cases further analysis is required.

⁸ That means that the following paragraph is not applicable “If a proposed small-scale project activity is deemed to be a debundled component in accordance with paragraph 2 above, but total size of such an activity combined with the previous registered small-scale CDM project activity does not exceed the limits for small-scale CDM project activities as set in paragraph 6 (c) of the decision 17/CP.7,³ the project activity can qualify to use simplified modalities and procedures for small-scale CDM project activities”.



Indicative simplified baseline and monitoring methodologies for selected small-scale CDM project activity categories

relevant methodologies shall be followed, e.g. eligibility of cogeneration projects as currently defined in AMS-I C;

- (c) A project activity with more than one component, where each component meets the microscale threshold, is eligible. The sum of the size of components of a project activity belonging to the same type (capacity for Type I, energy savings for Type II and emission reductions for Type III) shall not exceed the limits for microscale project activities (e.g. the limit for the methane recovery component is 20 ktCO₂e/yr and the limit for the electricity production component is 5 MW output capacity).

9. The Board at its fifty-seventh meeting clarified that “Guidelines on the demonstration and assessment of prior consideration of the CDM” apply to microscale project activities.

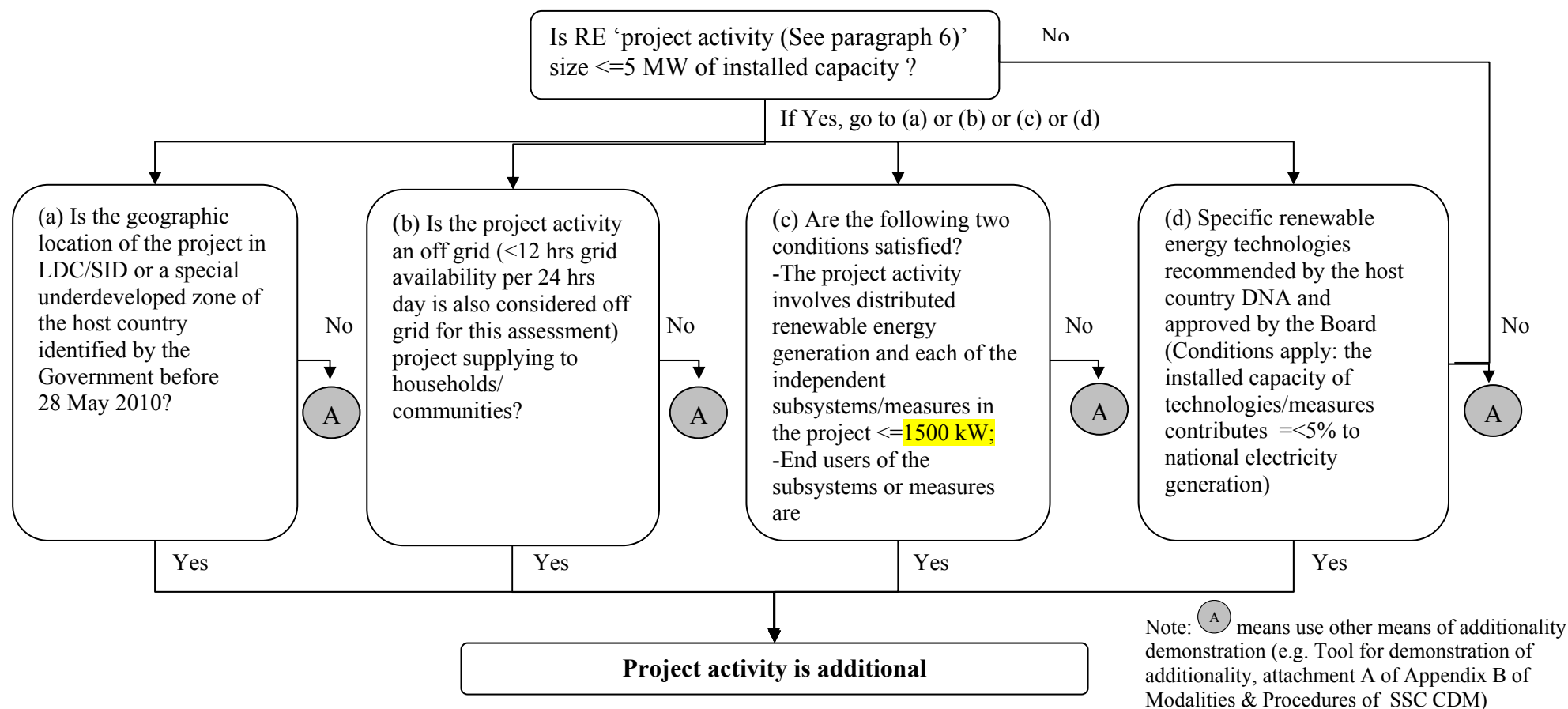
Indicative simplified baseline and monitoring methodologies
for selected small-scale CDM project activity categories

Figure 1: Microscale additionality test for RE project activities



Indicative simplified baseline and monitoring methodologies
for selected small-scale CDM project activity categories

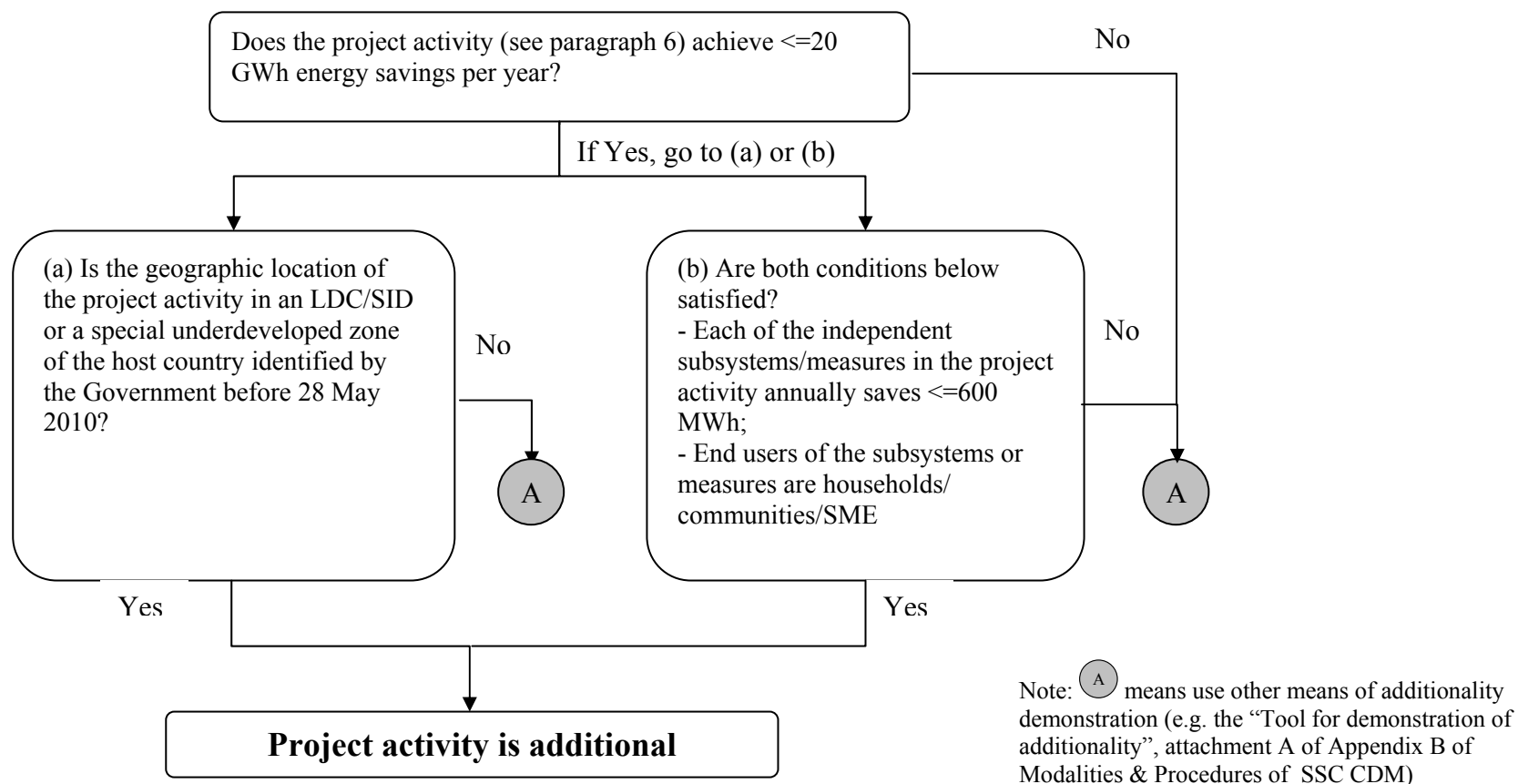


Figure 2: Microscale additionality test for EE project activities



Indicative simplified baseline and monitoring methodologies
for selected small-scale CDM project activity categories

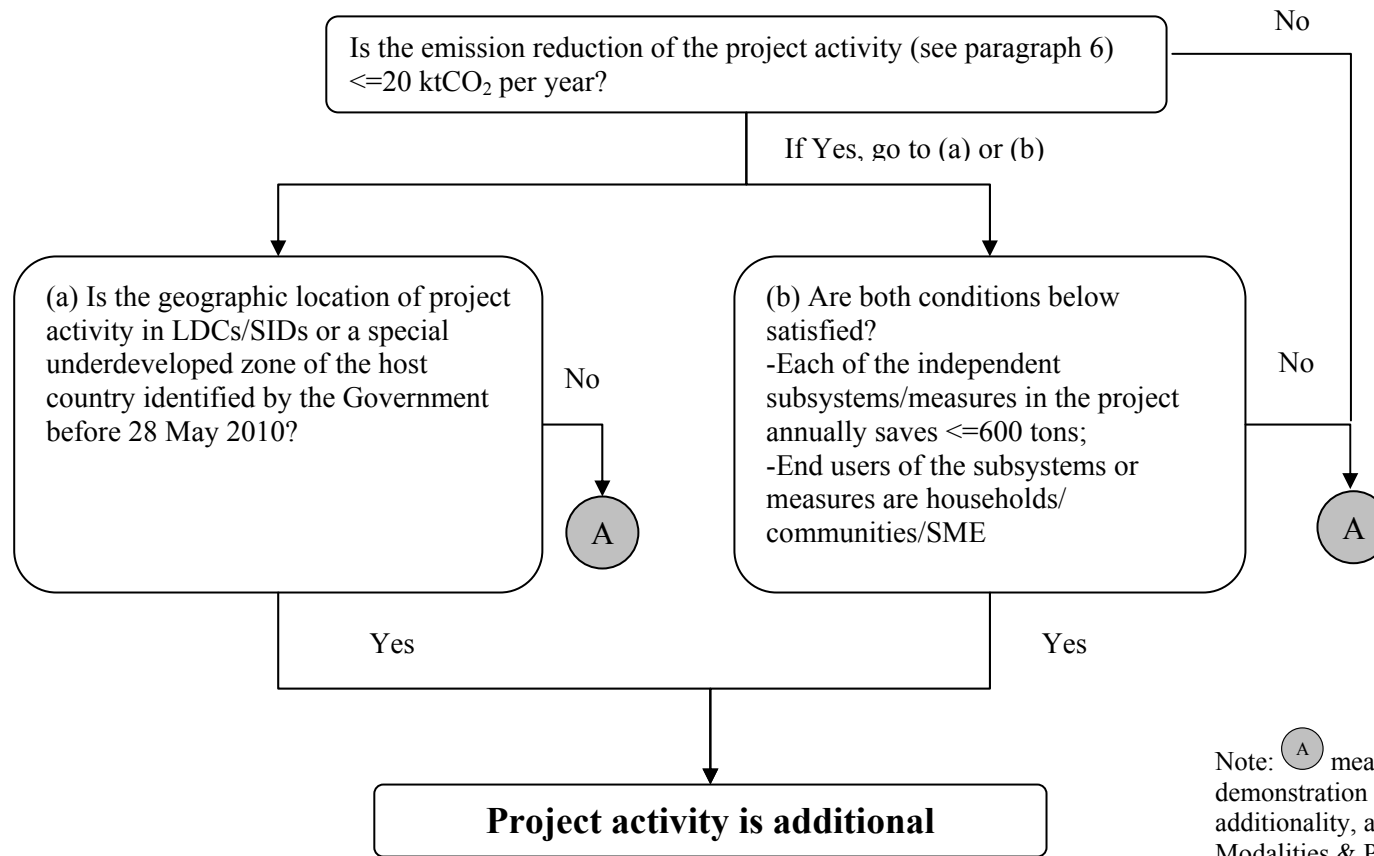


Figure 3: Microscale additionality test for project activities <= 20 ktCO₂/y



Indicative simplified baseline and monitoring methodologies
for selected small-scale CDM project activity categories

History of the document

Version	Date	Nature of revision
02	EB 60, Annex 25 15 April 2011	Inclusion of Type III projects, CPAs, project activities with more than one component.
01	EB 54, Annex 15 28 May 2010	Initial adoption.
Decision Class: Regulatory Document Type: Guideline Business Function: Methodology		