

Agenda item 3 b

Paragraph 8 of the addendum to the annotated agenda

INFORMATION NOTE ON ACM0013

CDM EB 62

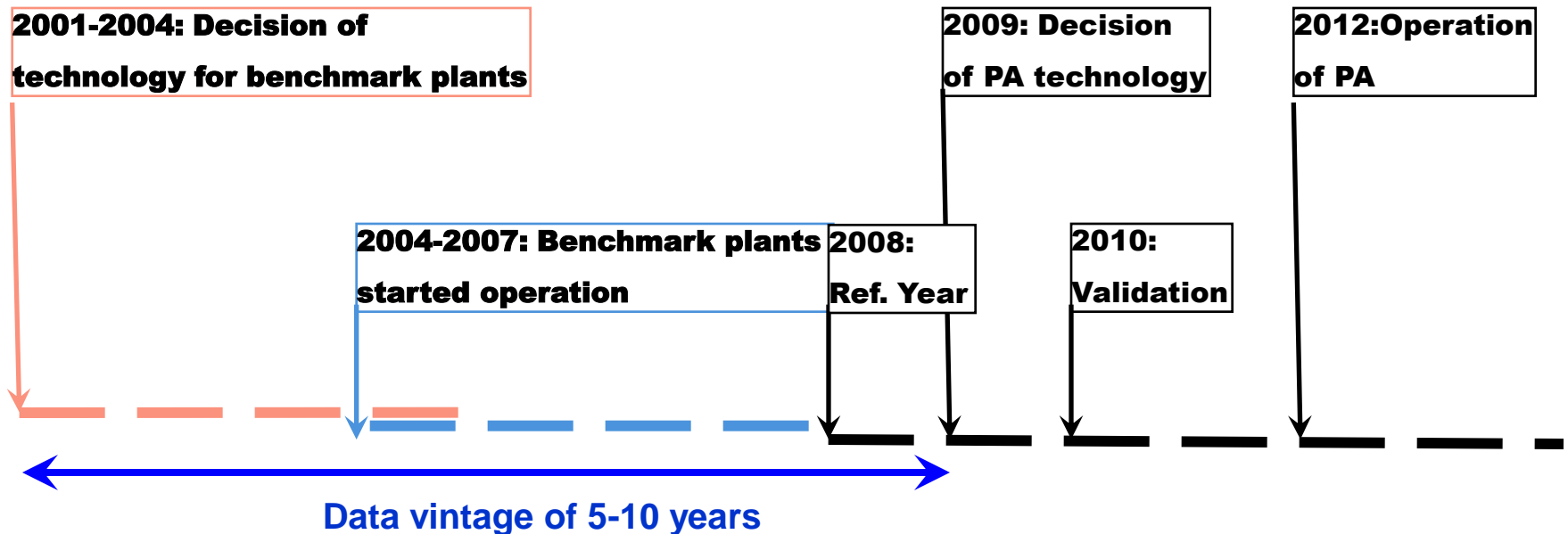
Marrakesh, Morocco, 11-15 July 2011



- **The Meth Panel identified that continued use of ACM0013 may lead to significant over-estimation of emission reductions**
- **The baseline emission factors is calculated as the minimum between**
 - Option 1: A baseline technology identified through an investment analysis as the technology with the lowest levelized cost of electricity production
 - Option 2: The average emission factor of the top 15% performer power plants commissioned in the five most recent years
- **Issue: autonomous technology improvement over time is not fully taken into account in Option 2)**
 - The efficiency of newly constructed fossil fuel fired power plants increases over time
 - “Under ideal conditions, modern coal-fired power plants are capable of achieving efficiency levels of more than 40%. This is about a 30% improvement on plants built in the 1950s and 1960s”. (IEA 2005)



- The project plant is compared with plants that were planned 5 – 10 years earlier
- These peer group plants may have lower efficiency than plants that are currently being planned



A review of PDDs revealed the following:

- The baseline efficiency values determined through the baseline selection procedure (Option 1) are rather low, while expected to be comparable to (or even higher than) the values derived from the top 15% plants (Option 2);
- The difference between project and baseline efficiency is often small. Therefore, an underestimation of the baseline efficiency can significantly impact overall emission reductions.
- For the projects applying Option 2 that are under validation, under review or registered, emission reductions would be overestimated by about 25% on average, if the baseline efficiency increases by 1% (e.g. from 38% to 39%) due to autonomous technological improvement



Meth Panel recommendations:

- Put the methodology on hold with immediate effect, while initiating a revision of the methodology;
- Initiate a revision of the methodology:
 - Option 1: improve the procedure for the identification of the baseline scenario;
 - Option 2: include the consideration of technology improvement and a more suitable definition of the data vintage.
- External expertise is required
- The Meth Panel could prepare a revised methodology by MP52 which could be considered by EB64

Agenda item III.b

Paragraph 2c of the addendum to the annotated agenda

NM333:

Avoidance of landfill gas emissions by passive aeration of landfills

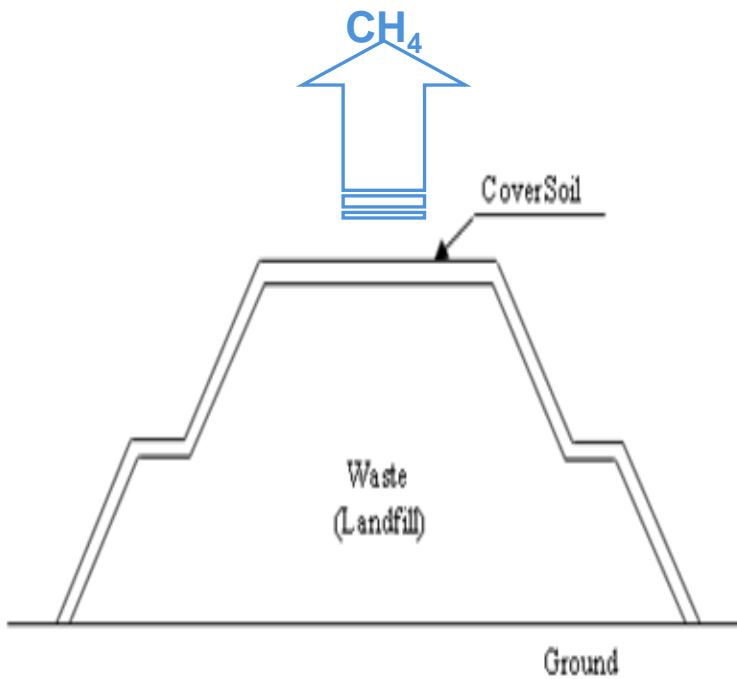
CDM EB 62

Marrakesh, Morocco, 11-15 July 2011



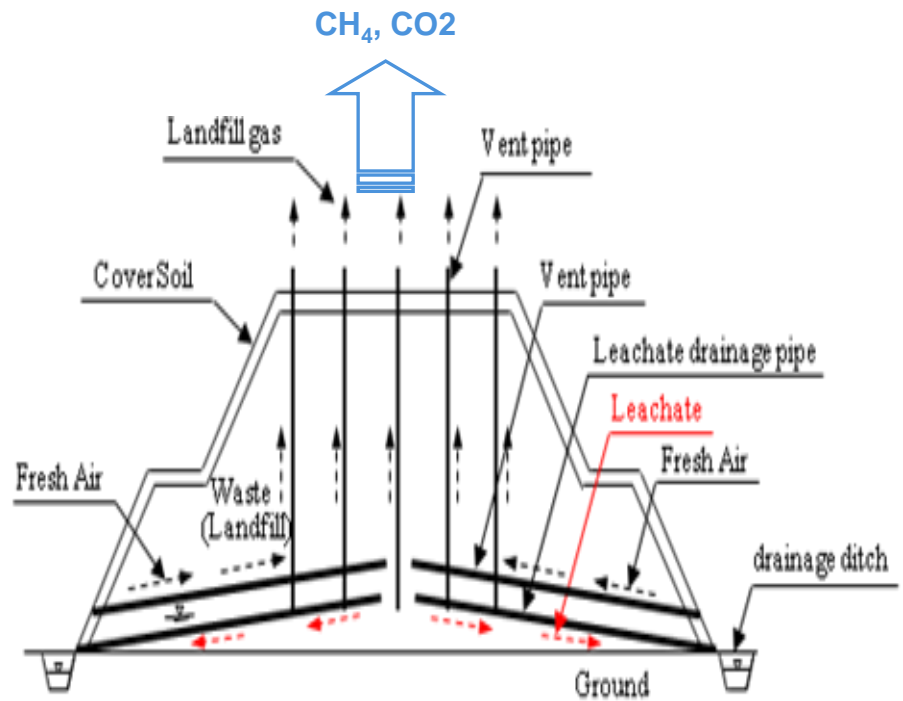
NM333: Avoidance of landfill gas emissions by passive aeration of landfills

BASELINE



CASE-1 Anaerobic condition
(Applicable waste disposal site)

PROJECT



CASE-2 Semi-aerobic condition
(Improved waste disposal site)



Applicability

- **Treatment of landfilled waste in closed landfills or closed landfill cells;**
- **If mandatory environmental regulations require the collection and flaring of landfill gas, the corresponding compliance rate is below 50% in the host country;**
- **The distance between adjacent vertical venting wells shall not be more than 40 metres, and the number of venting wells is more than one per 7,646 cubic metres of waste.**

Baseline

- **FOD model, adjusted based on a baseline campaign.**

Project

- **Measurements of venting wells and landfill surface.**
-

