

## Agenda item 3 e

Paragraph 36 of the annotated agenda

# UPDATE ON THE IMPLEMENTATION OF REGISTRATION AND ISSUANCE PROCEDURES

**CDM EB 62**

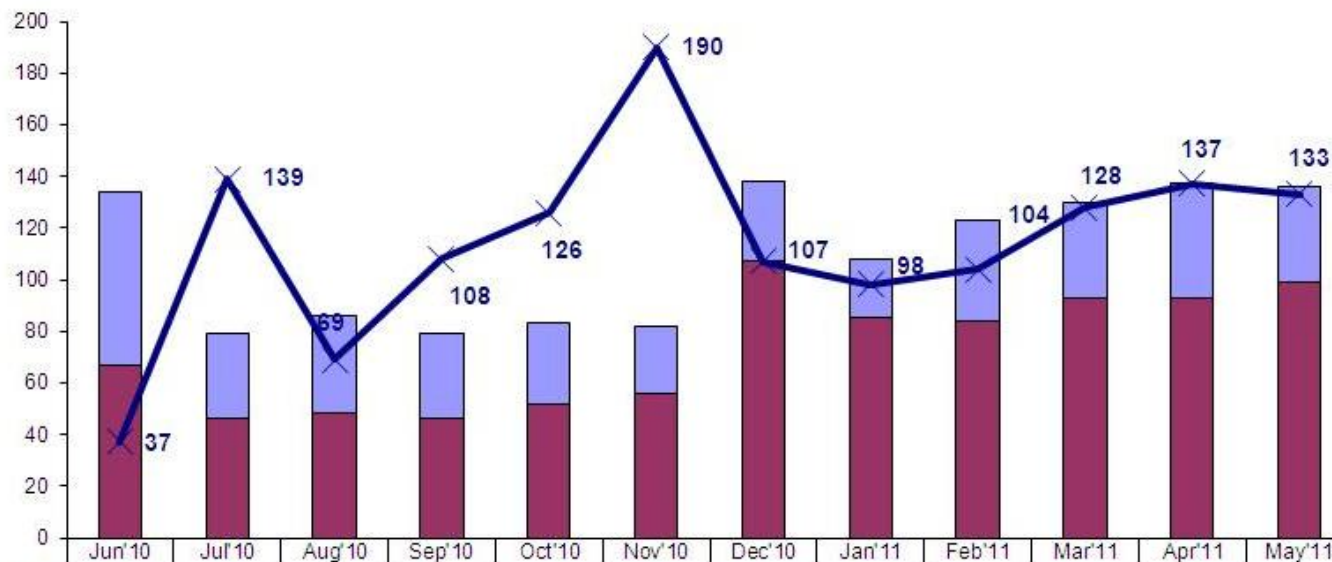
Marrakesh, Morocco, 11-15 July 2011



## Status of submissions - Registration

REQUESTS FOR REGISTRATION  
Submitted v processed requests

Number of requests



	Jun'10	Jul'10	Aug'10	Sep'10	Oct'10	Nov'10	Dec'10	Jan'11	Feb'11	Mar'11	Apr'11	May'11
Resubmissions	67	33	38	33	31	26	31	23	39	37	44	37
New Submissions	67	46	48	46	52	56	107	85	84	93	93	99
Processed	37	139	69	108	126	190	107	98	104	128	137	133

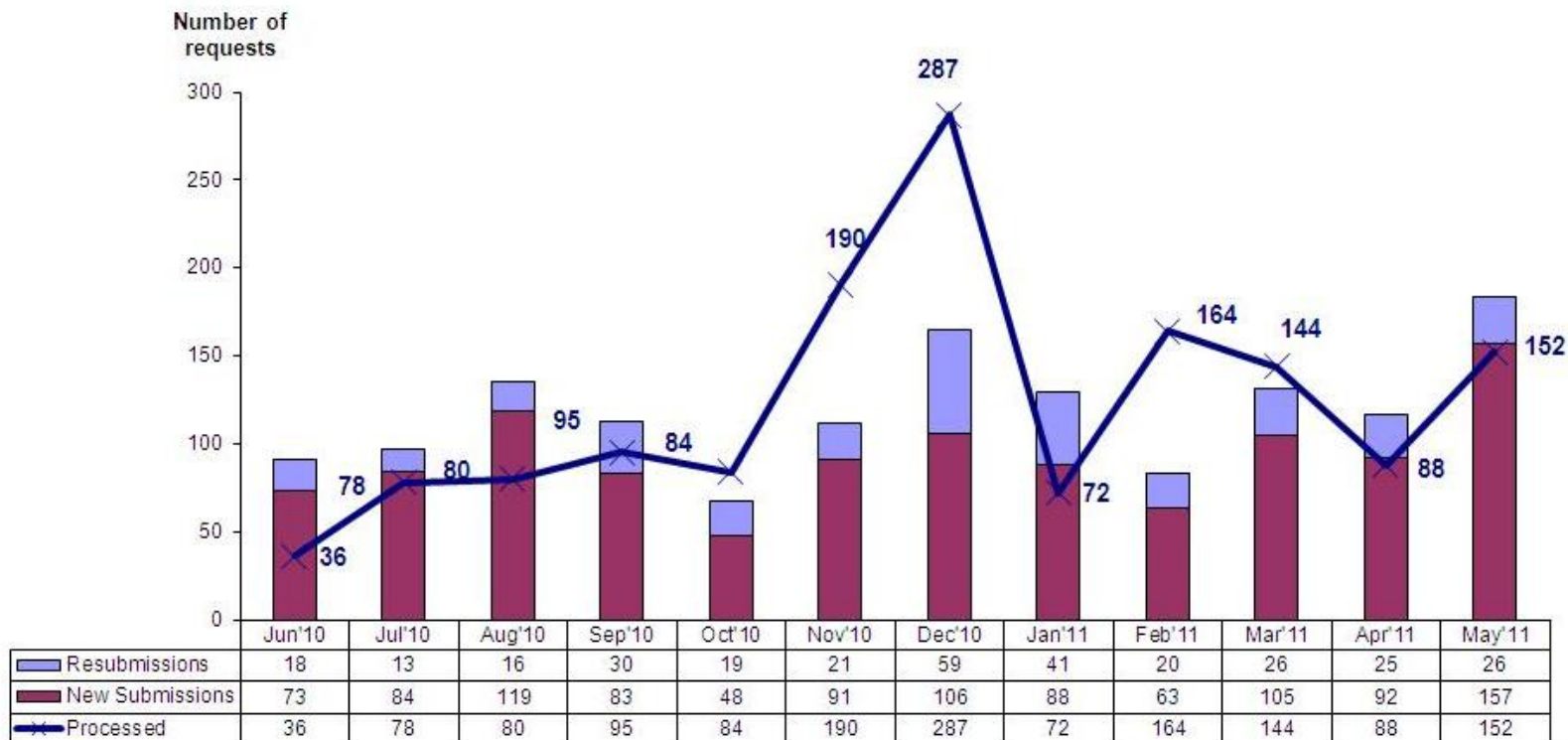
\* Processed cases indicates cases commencing completeness check process

June submission: 133  
June commencement: 135



## Status of submissions - Issuance

REQUESTS FOR ISSUANCE  
Submitted v processed requests



\* Processed cases indicates cases commencing completeness check process

June submission: 184  
June commencement: 199

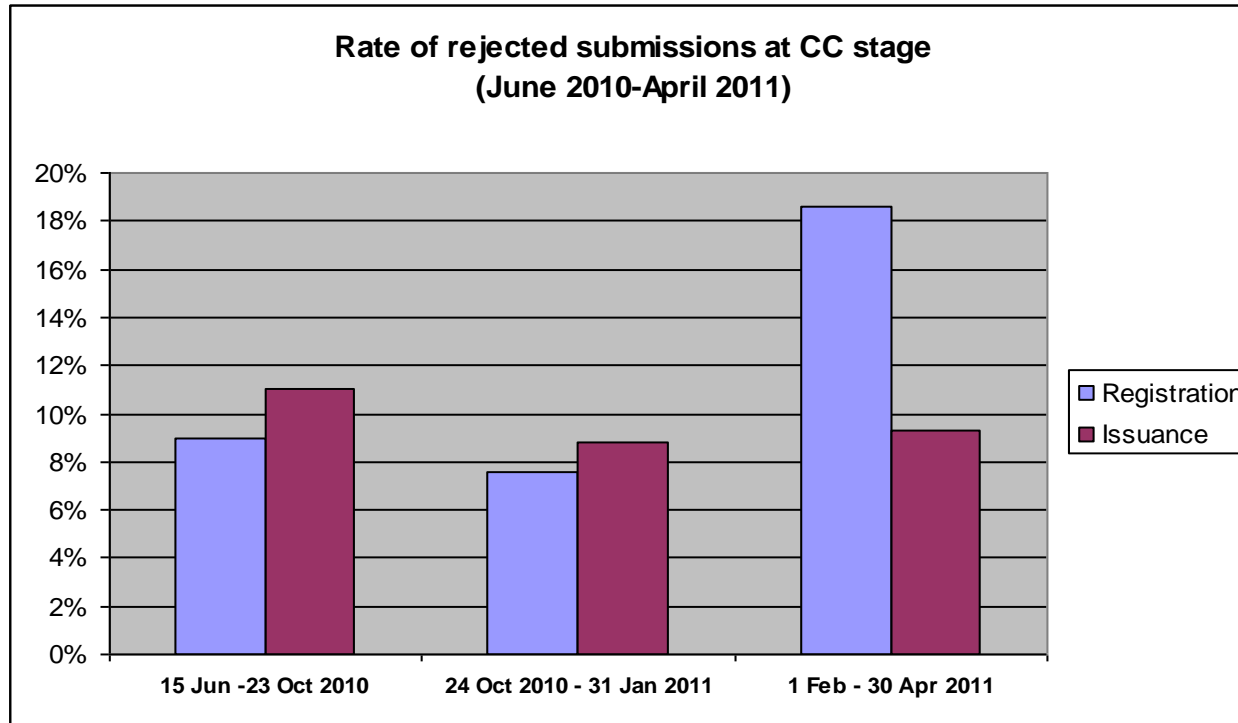


## Actions to address peak submissions

---

- Increase the pool of experts to assist in dealing with peak submissions:
  - 27 experts were trained and worked on-site for two weeks in December 2010
    - Assessing 270 submissions
    - Training focused on Issuance cases
  - Additional 9 new experts were trained and worked on-site along with 15 existing experts for one week in June 2011
    - Assessing 135 submissions
    - Training on Registration and Issuance cases
    - Training on review cases
- Increase the use of experts
  - 10-20% of submissions assigned to experts in early 2011, increased to 40-50% in July (issuance)
  - 20% of submissions assigned to experts as of July, increased to 30% (registration)

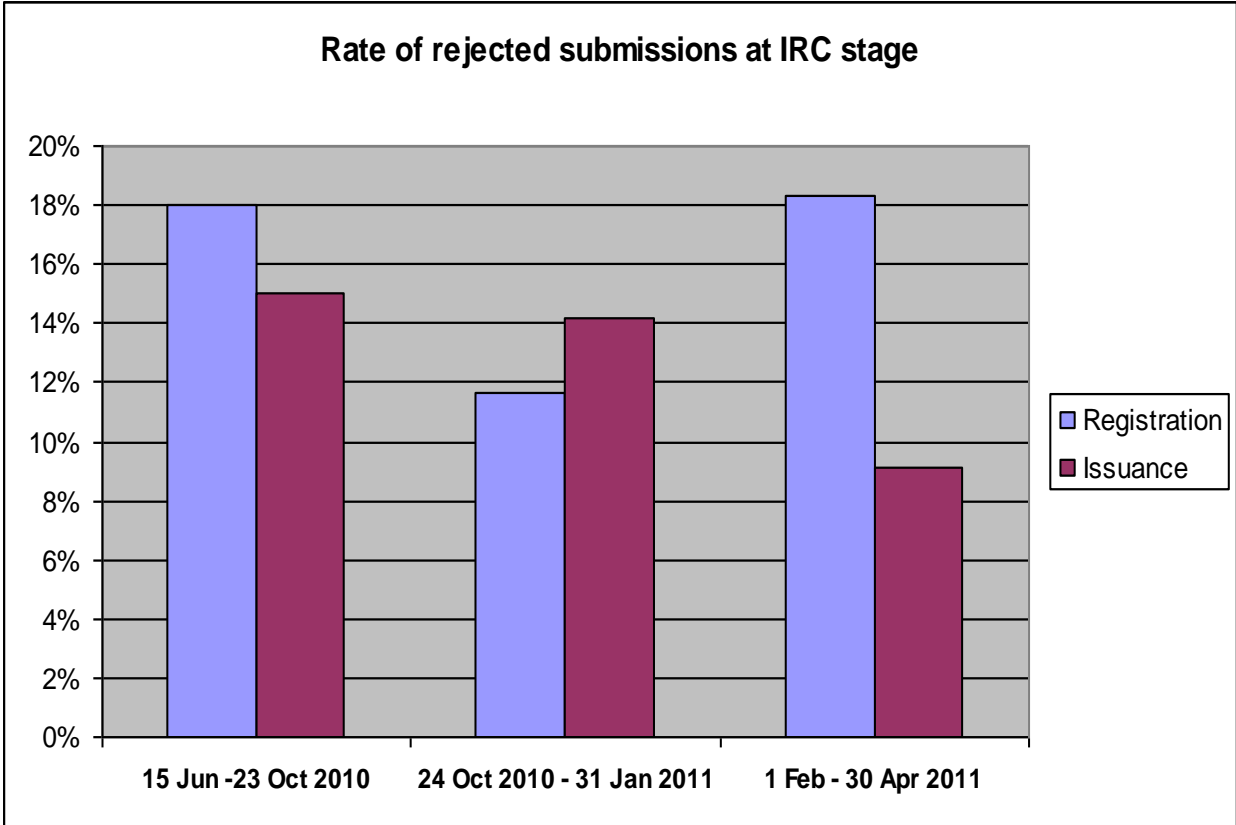
## Implementation of completeness checks



	Registration		Issuance	
	1 Feb - 30 Apr 2011	15 Jun-23 Oct 2010	1 Feb - 30 Apr 2011	15 Jun-23 Oct 2010
Incomplete submission	26%	16%	3%	9%
Incomplete information	28%	34%	18%	9%
Inconsistency	41%	28%	65%	67%
Other	4%	21%	15%	15%

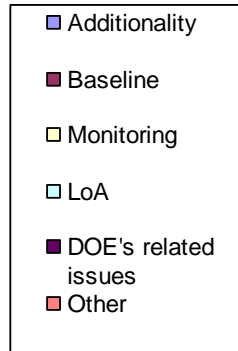
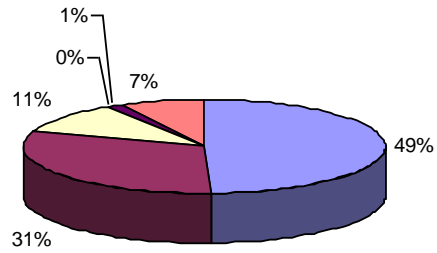


# Implementation of Information & Reporting checks



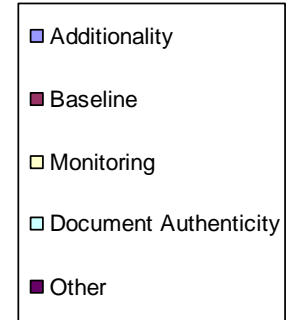
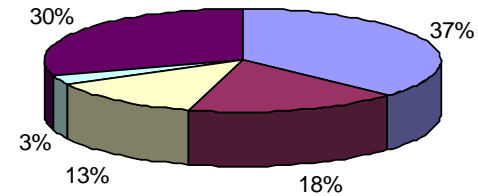
# Implementation of Information & Reporting checks – cont'd

**I&R Check failures - Registration**



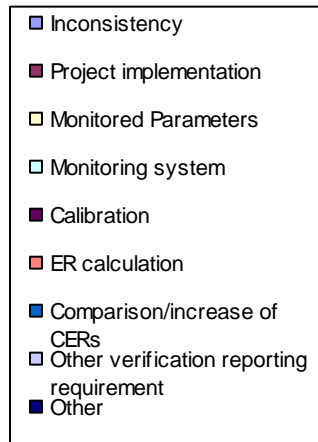
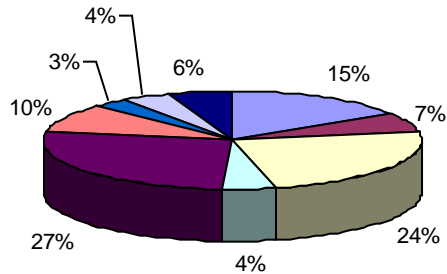
1 Feb – 30 Apr 2011

**I&R Check Failures - Registration**

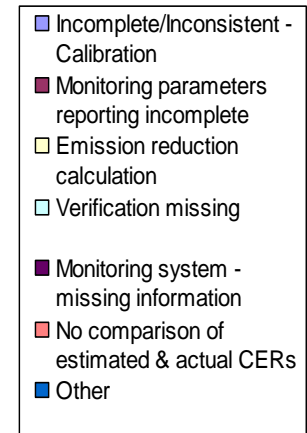
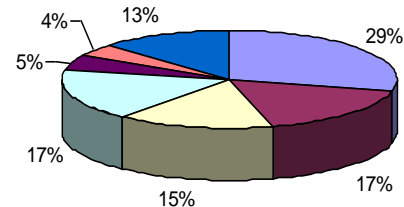


15 June – 23 Oct 2010

**I&R check failures - Issuance**



**I&R Check Failures - Issuance**

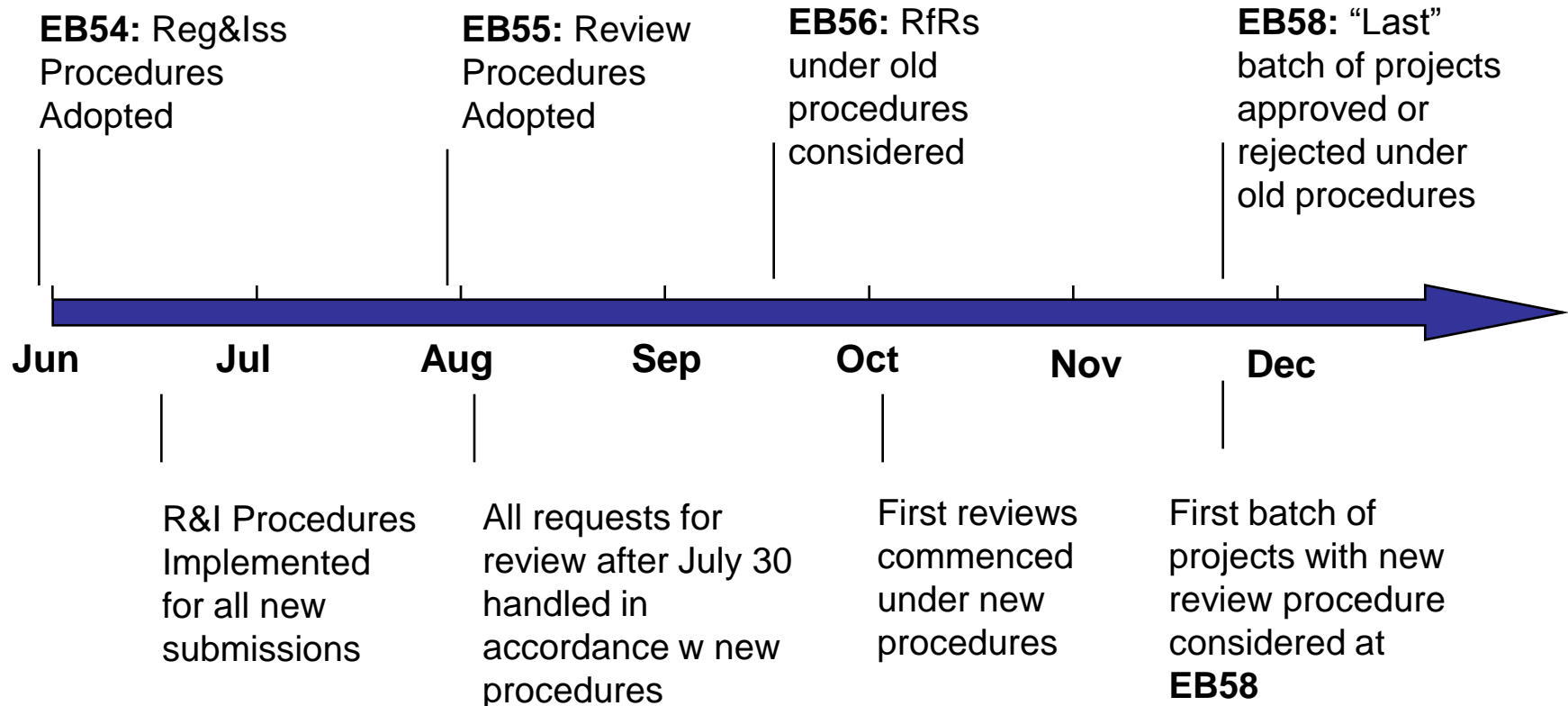


## Improvements to check lists

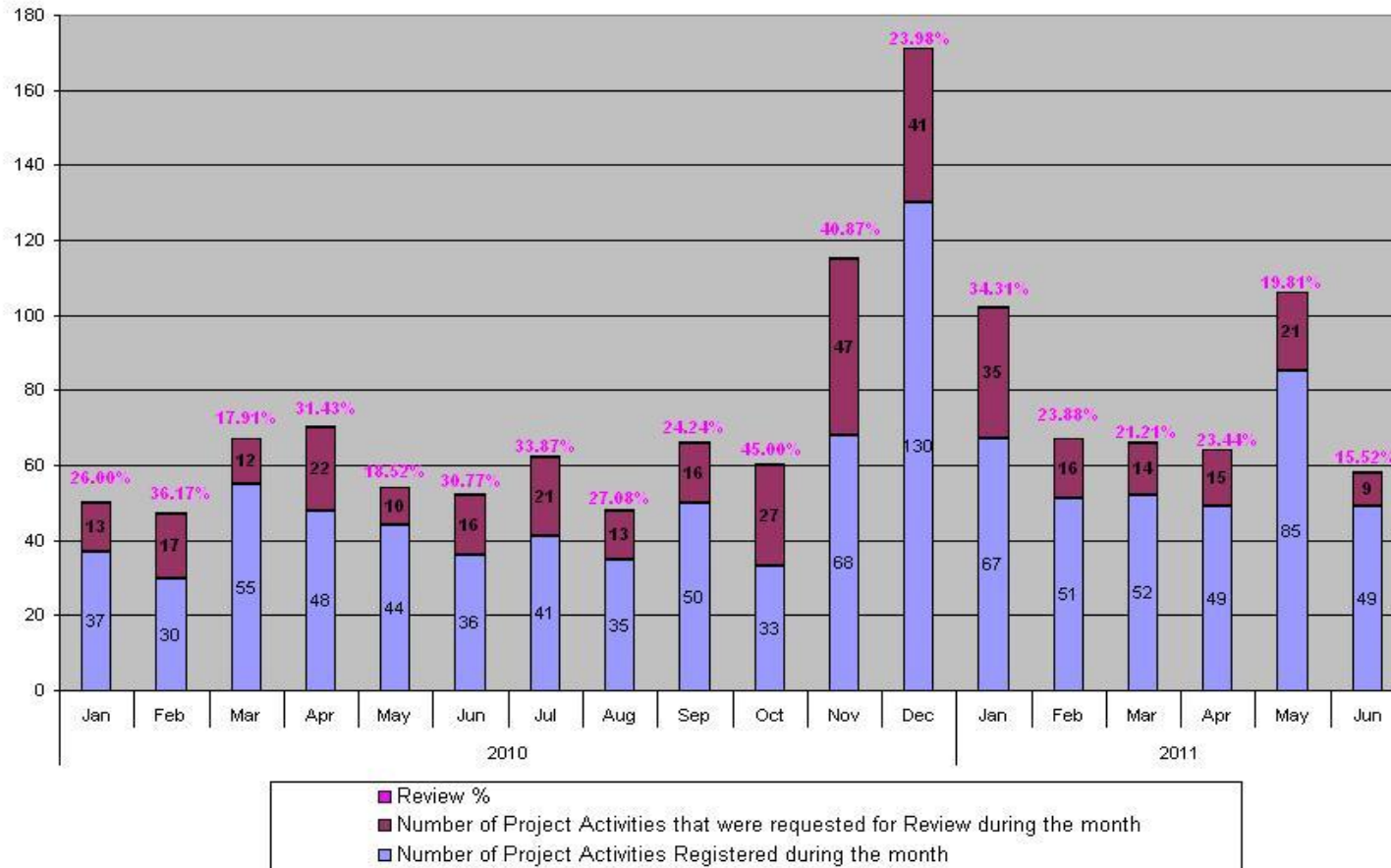
---

- First CC and IRC lists were published on 10 June 2010 following the adoption of the new Registration and Issuance procedures at EB54
- The lists were revised and made public on 3 June 2011, containing:
  - Improved and clarified questions – to ensure related requirements can be addressed objectively and to avoid rejection based on typographical errors
  - Updates from latest version of VVM (vers 1.2) adopted by the Board at EB55
  - Updates from requirements of Monitoring Report template adopted by the Board which became effective on 29 September 2010
- Effective as of 1 July 2011

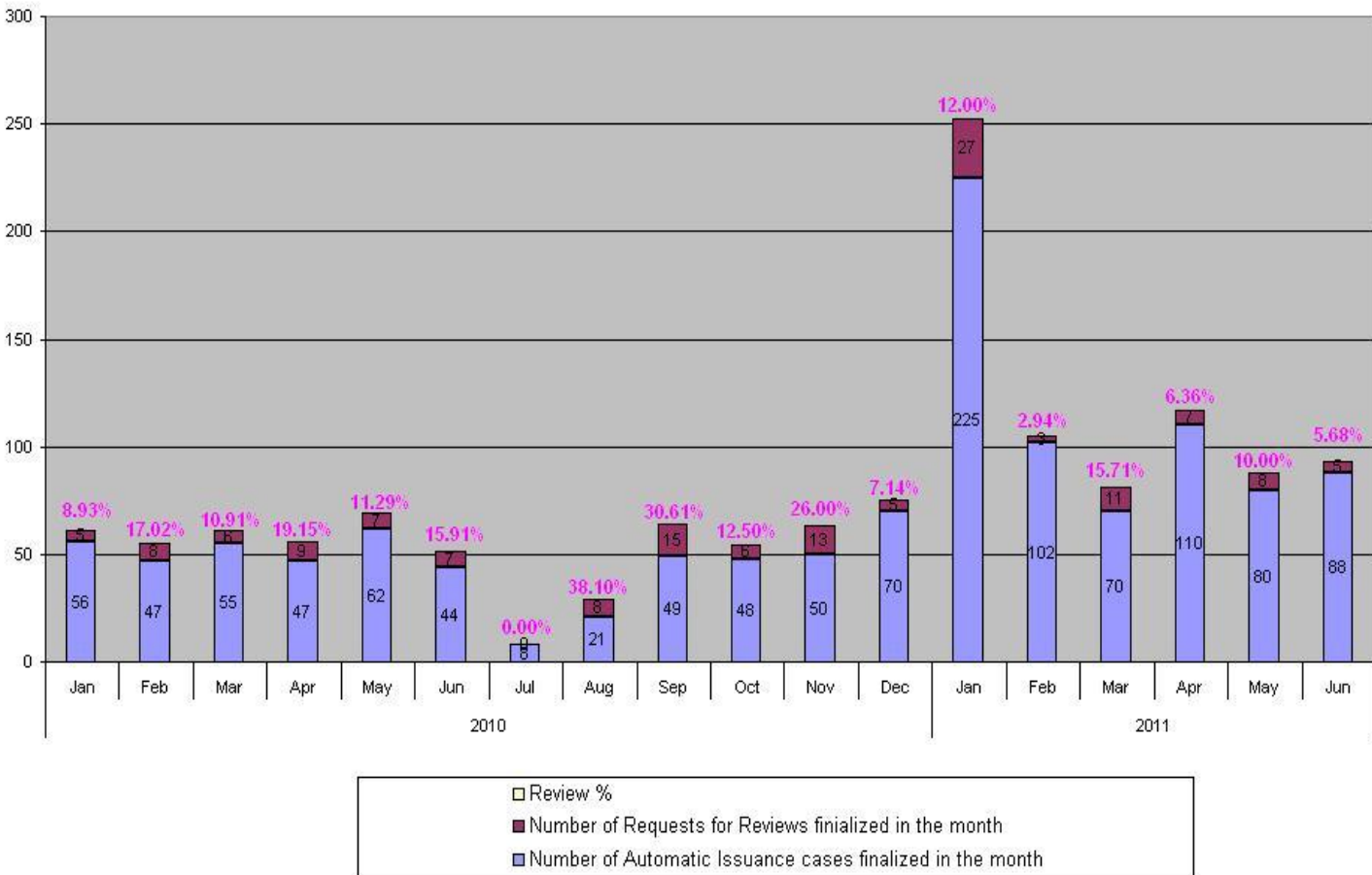
## Implementation of review procedures – summary of timelines



## Implementation of review procedures – Rate of review (Registration)



# Implementation of review procedures – Rate of review (Issuance)



## Implementation of review procedures – observed trend

---

- Declining rate of review was observed for Issuance from average 16.5% in 2010 to 8.8% in first half of 2011
- Declining rate of review was also observed for Registration from average 29.7% in 2010 to 23% in first half of 2011
- This is partly attributable to some issues were detected earlier during IRC checks (e.g. additionality – Registration, calibration – Issuance)

## Differing recommendations between secretariat and RIT members

EB	Total reviewed cases at EB meeting	Cases in disagreement	% disagreement
59	39	7	18
60	79	33	42
61	43	11	26
Average			29

Registration

EB	Total reviewed cases at EB meeting	Cases in disagreement	% disagreement
59	26	6	23
60	29	9	31
61	-	-	-
Average			27

Issuance

## Improvement of understanding of Board's guidance

---

- Secretariat organised an RIT Calibration workshop 16-17 June 2011 to facilitate dialogue and exchange of views on interpretation/application of Board's guidance to review cases
- Attended by 17 RIT members + secretariat staff members
- Case study discussion in break-out groups, training on review notes/rulings, RIT interface
- Key outcomes:
  - Improved common understanding on certain contentious issues: prior consideration, investment analysis, barrier analysis, project implementation, monitoring requirements
  - Agreed means of communication in the future