

Agenda item 4.2

Paragraph 53 of the annotated agenda

New post registration change process

CDM EB 65

Durban, South Africa, 20–25 November 2011



1. Background

- At EB 61, the Board provided guidance for the development, revision and consolidation of standards and procedures related to the CDM project cycle, including:
 - a) Merging process into the request for issuance procedure
 - **Certain post-registration changes to be merged into the request for issuance process**
 - **New procedure and associated standard for the process requiring prior approval before request for issuance**
 - b) Incorporation of risk-based approaches
- Draft CDM project cycle procedure (**PCP**) contains a restructured process for handling post-registration changes, while draft CDM project standard (**PS**) and validation and verification standard (**VVS**) contain corresponding standards

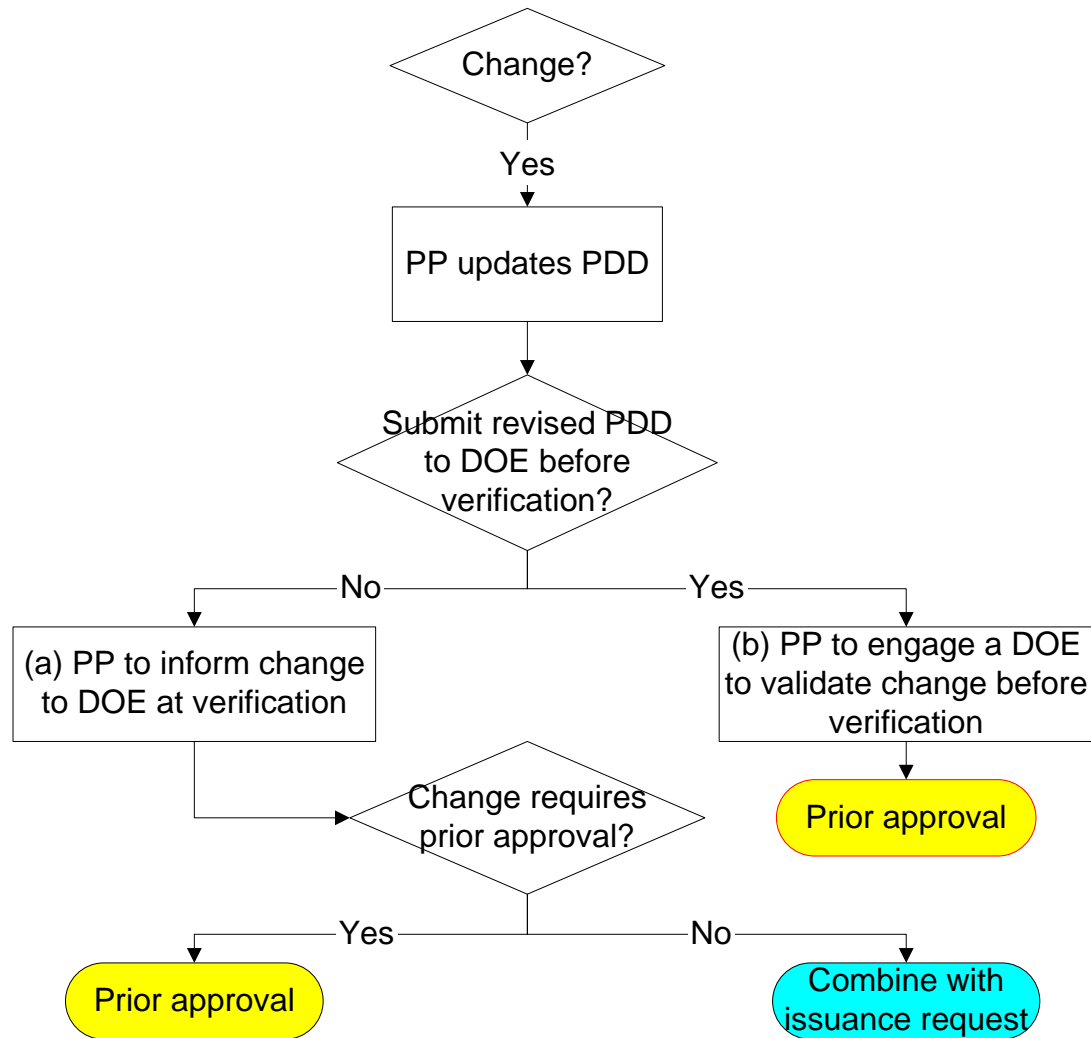


2. Types of changes

- a) Temporary deviation from monitoring plan or monitoring methodology
- b) Permanent changes:
 - i. Corrections
 - ii. Start date of crediting period
 - iii. Monitoring plan or monitoring methodology
 - iv. Project/programme design



2. New post-registration change process: two tracks



3. New post-registration change process: criteria

Changes that do NOT require prior approval by the Board (PS, appendix A)

1. Corrections (e.g. typo, location, name)
 2. Temporary deviations from monitoring plan or applied methodology:
 - PPs have not temporarily monitored parameters for baseline emissions, or are unable to produce evidence of such monitoring
 - Report the parameters as zero.
 - PPs have not temporarily monitored parameters for project emissions or are unable to produce evidence of such monitoring
 - Assume the source of emissions operated at maximum capacity for the full period of the missing data. (for consumption of electricity, add 10% to the estimate to account for transmission and distribution losses)
 3. Permanent changes from monitoring plan or applied methodology limiting to:
 - Monitoring equipment installed has a lower accuracy level than stipulated in the methodology but the equipment is under control
 - Calibration frequency, accuracy/type/model of meter(s)
 - Location of meter(s)
-



3. New post-registration change process: criteria (cont.)

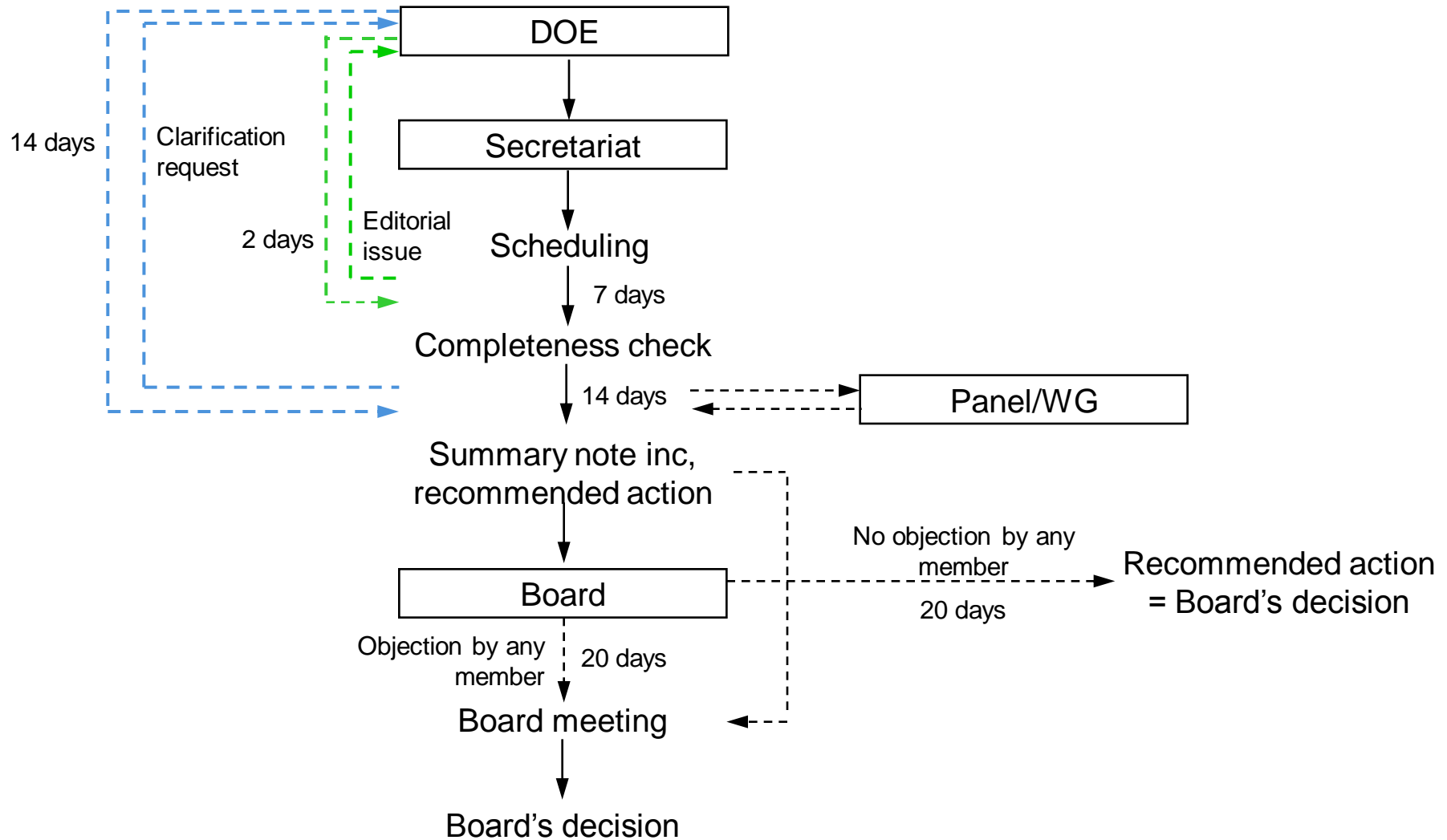
Changes that do NOT require prior approval by the Board (PS, appendix A)

3. Permanent changes from monitoring plan or applied methodology limiting to:
 - Monitoring equipment installed has a lower accuracy level than stipulated in the methodology but the equipment is under control
 - Calibration frequency, accuracy/type/model of meter(s)
 - Location of meter(s)
4. Changes to project design that do not adversely impact the additionality or project scale
5. Changes specific to A/R projects (listed in the “Guidelines on accounting of specified types of changes in A/R CDM project activities from the description in registered project design document

All other changes require prior approval by the Board



4. New post-registration change process: prior approval track



5. New post-registration change process: issuance request track

- Add documentation and information on the change in the request for issuance submission
- The change will be assessed together with the request for issuance

