

## Agenda item 4.2

Paragraph 57 of the annotated agenda

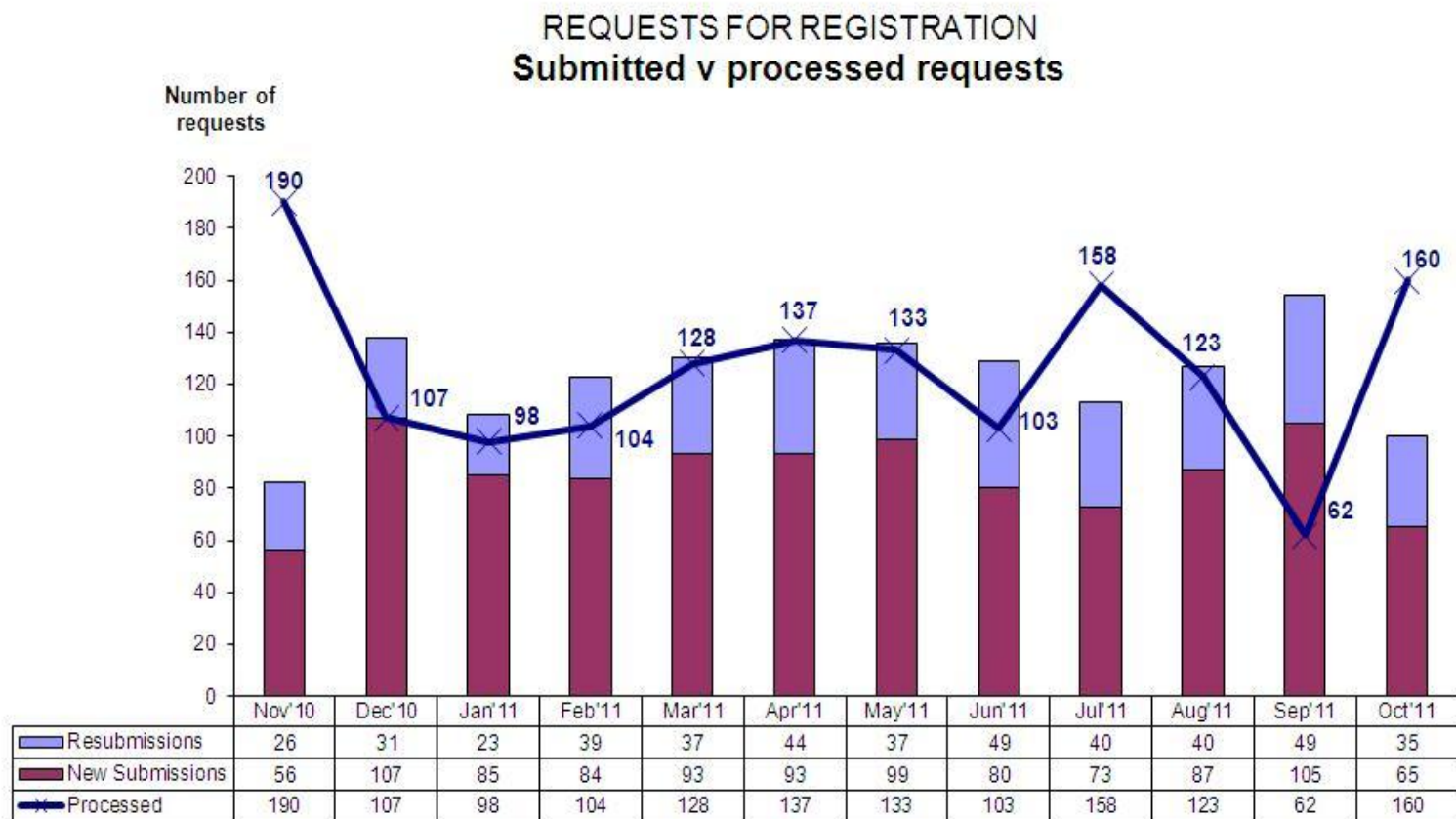
# UPDATE ON THE IMPLEMENTATION OF REGISTRATION AND ISSUANCE PROCEDURES

**CDM EB 65**

Durban, South Africa, 21-25 November, 2011



## Status of submissions - Registration



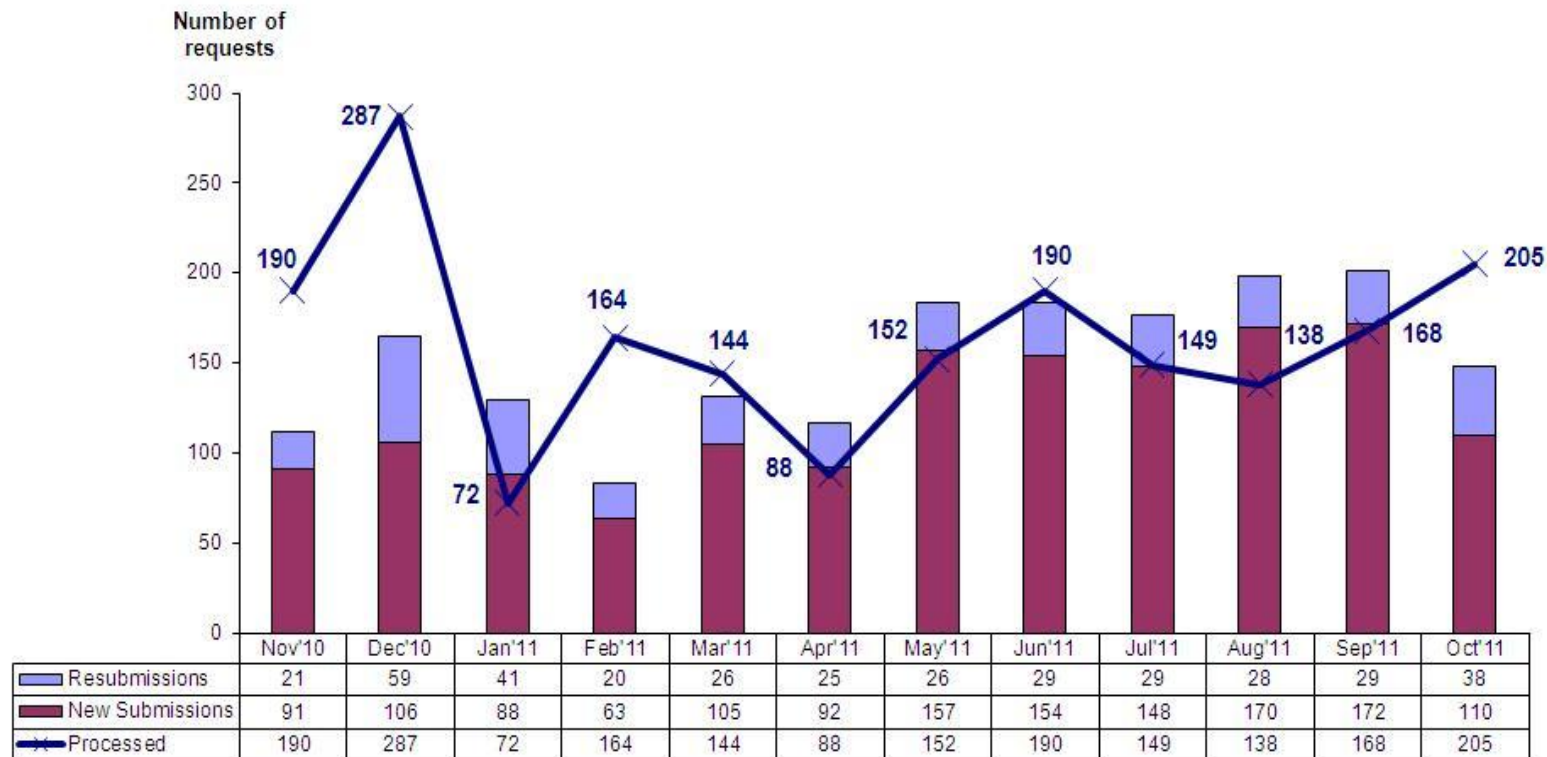
\* Processed cases indicates cases commencing completeness check process

\* Up to 15 Nov 2011



## Status of submissions - Registration

REQUESTS FOR ISSUANCE  
Submitted v processed requests



\* Processed cases indicates cases commencing completeness check process

\* Up to 15 Nov 2011



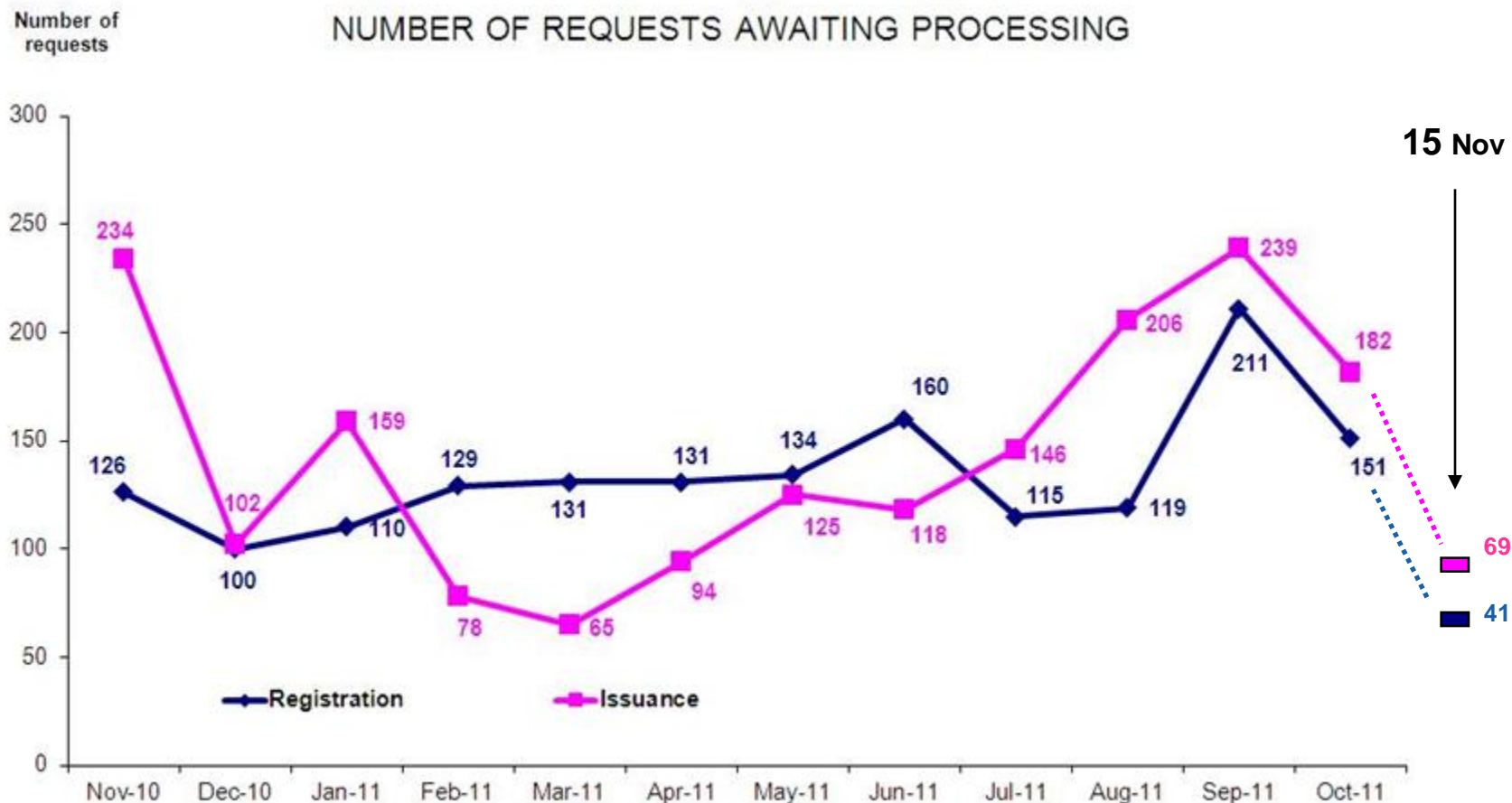
## Actions to address peak submissions

---

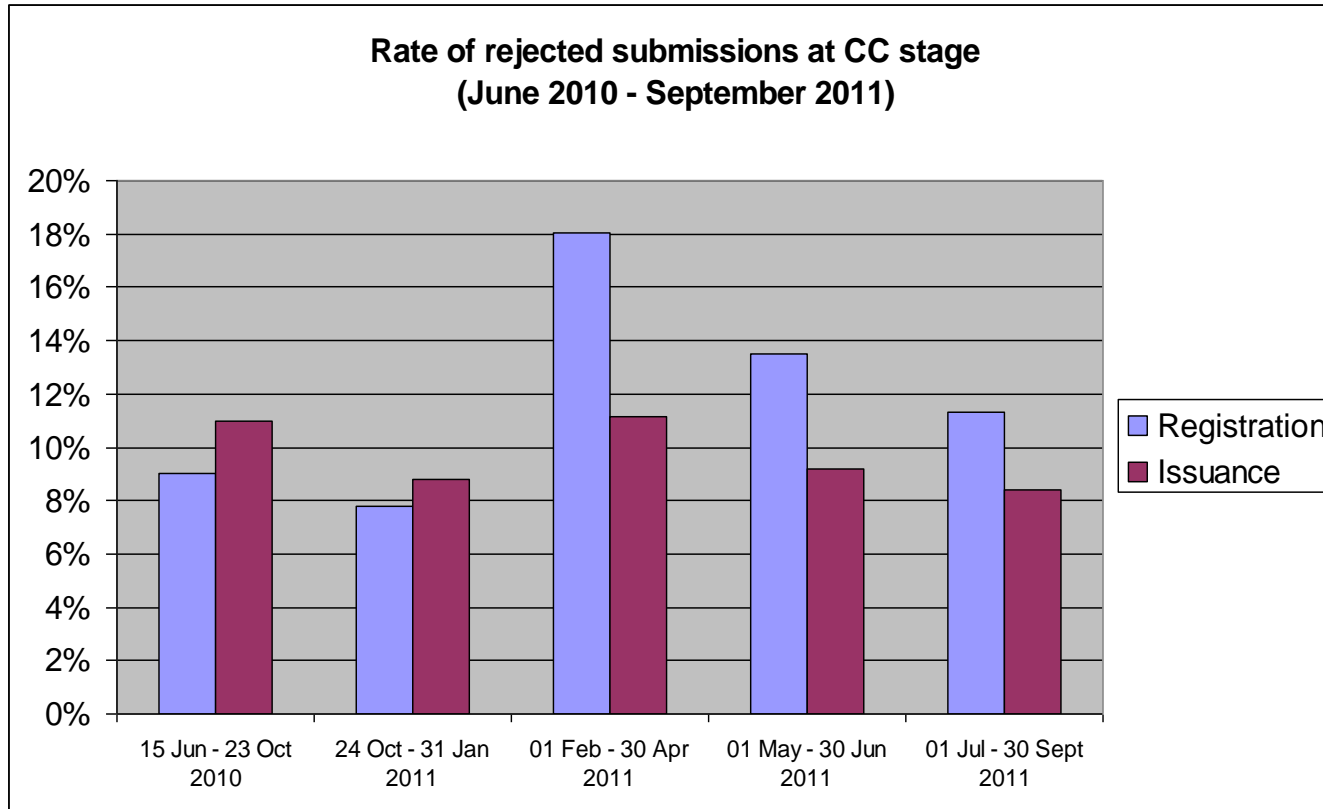
- “Non-OPA” (intensive) period of cases processing starting 18 October – 15 Nov
  - 40% increased load than usual for this period, taking into account available resources in house and experts (this exercise involves 21 out of 36 experts)
  - Alternative means to achieve relatively high throughputs as on-site project assessments (as done in Dec 2010 and June 2011)
  - 549 registration and issuance cases (including PoA requests) have been commenced during this period
  - Brought down the waiting time from 32 days to 13 days
  - As of 15 Nov cases pending to be processed :41 Registration cases (submissions as of from 2 Nov) & 69 Issuance cases (submission as of 3 Nov from)



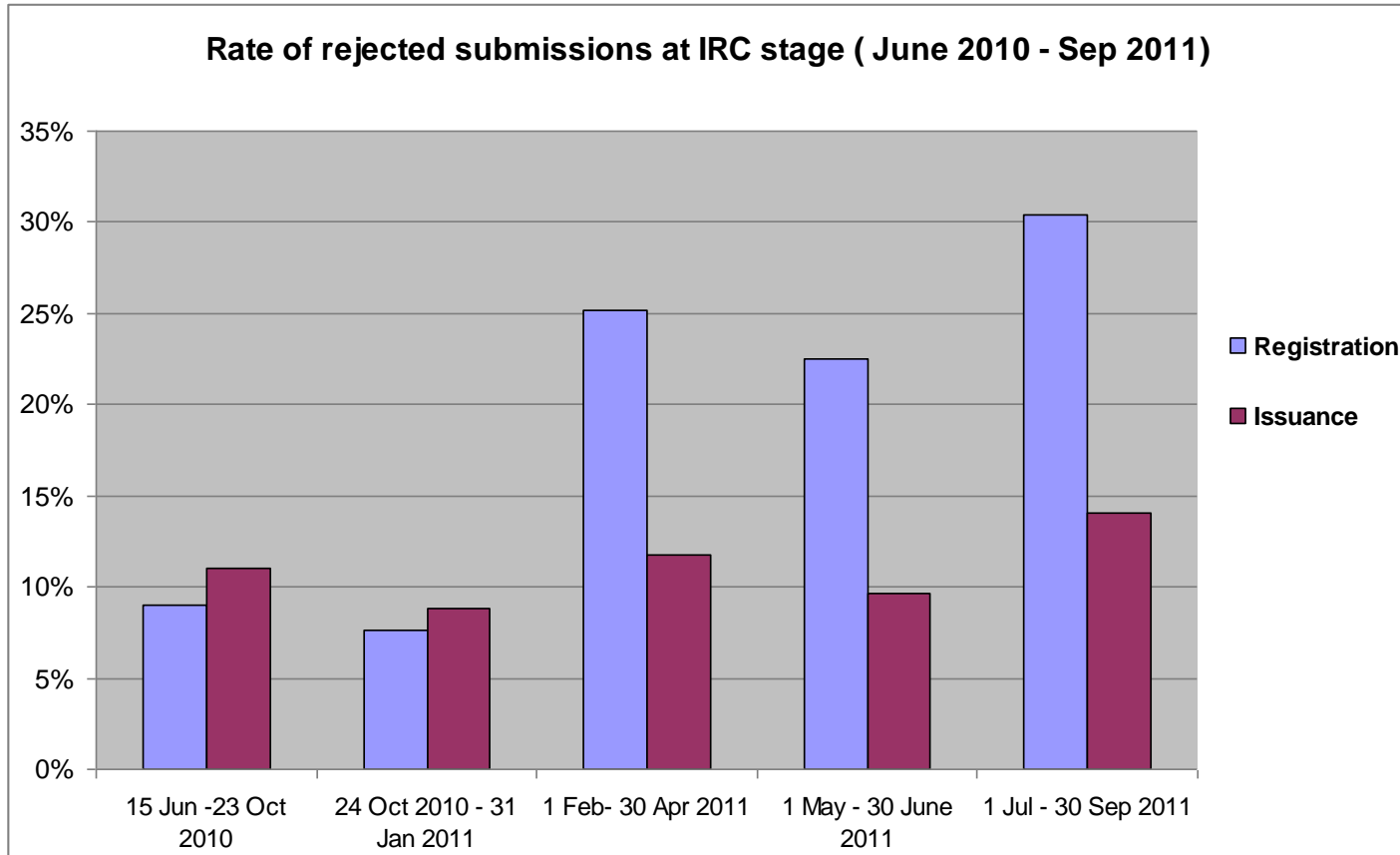
## Status of submissions – Awaiting commencement



## Implementation of completeness checks



## Implementation of Information & Reporting checks



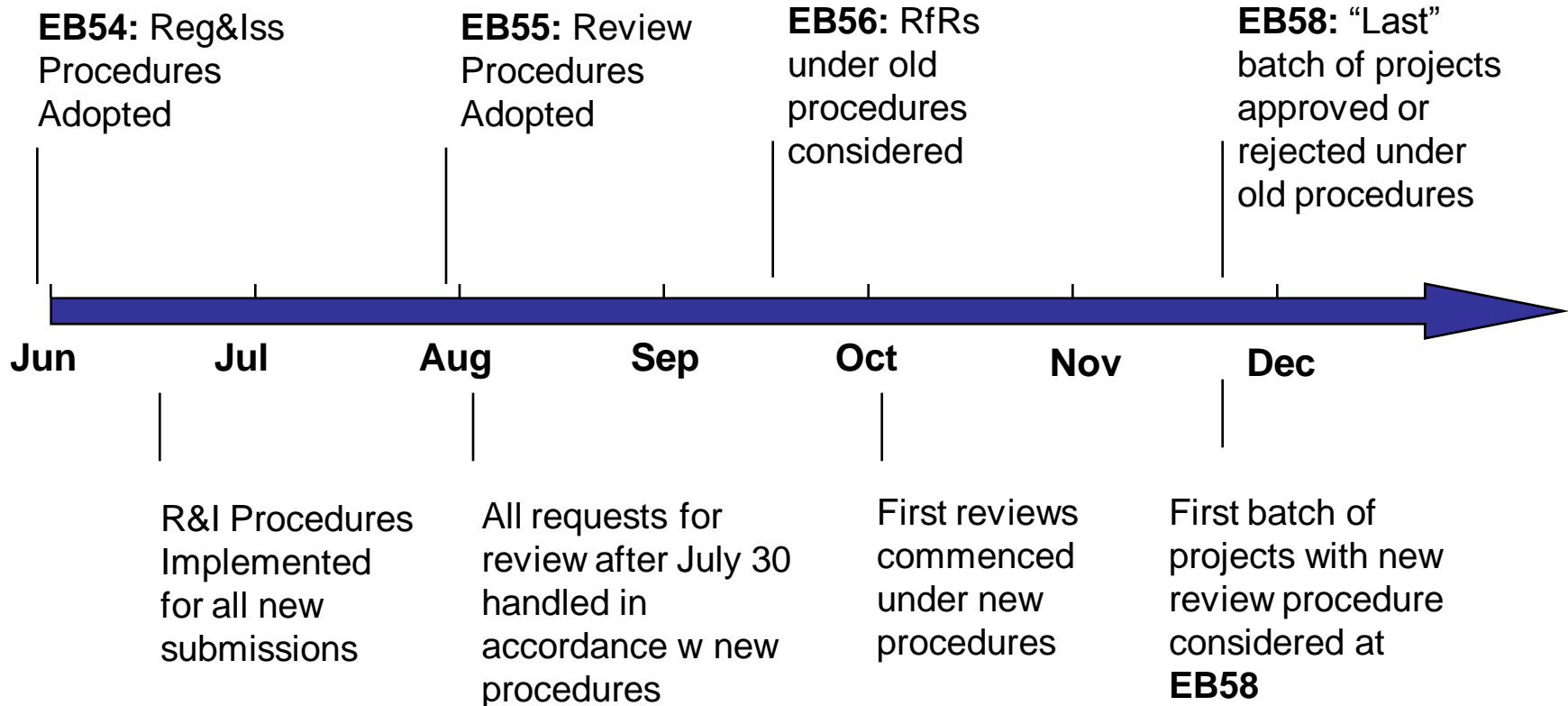
## Implementation of CC & IRC – observed trend

---

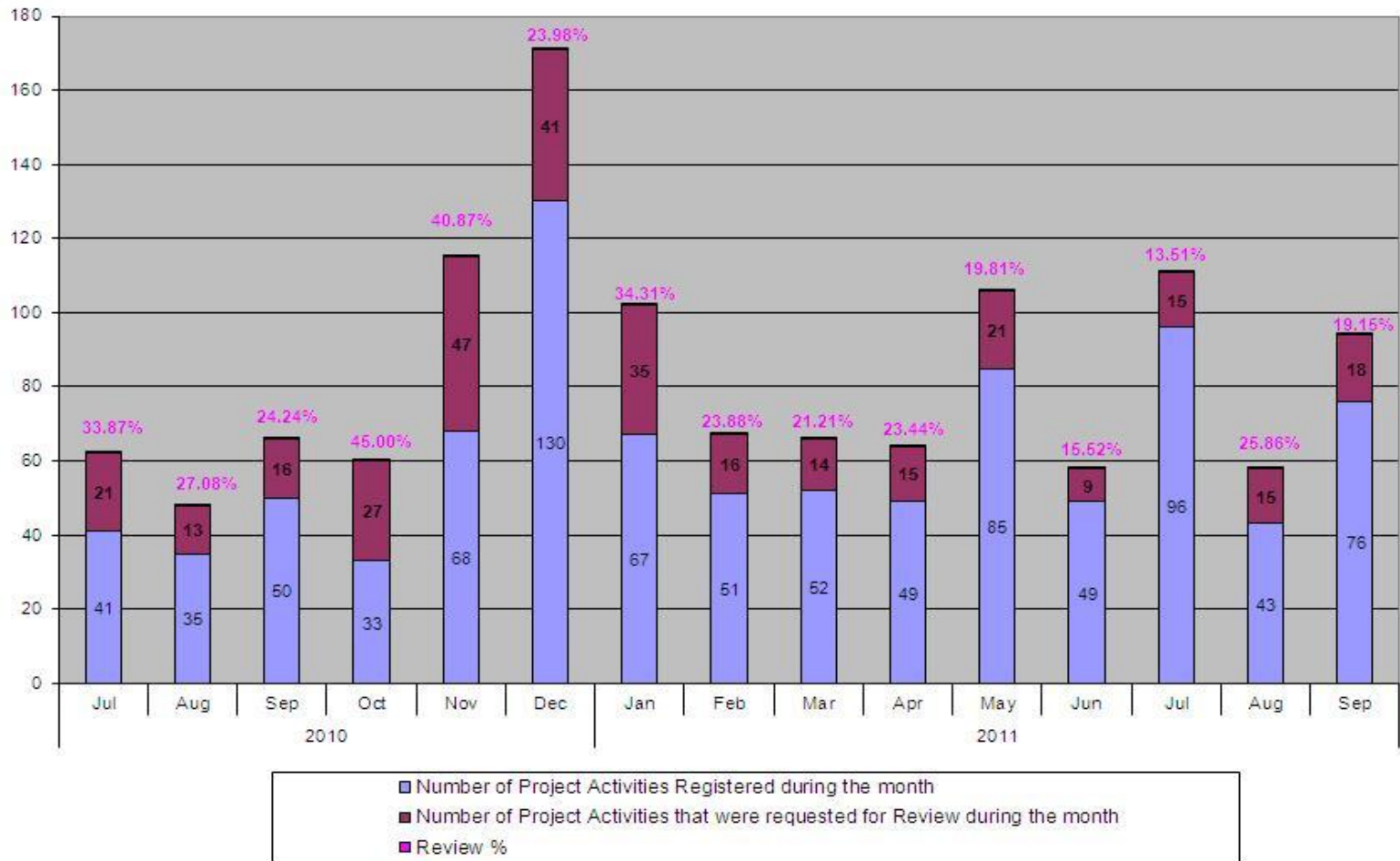
- Rate of returned submissions at the IRC stage in general increased - attributable to some issues that were detected earlier during IRC checks (e.g. additionality – Registration, calibration – Issuance)
- Composition of reasons for rejection at CC stage varies throughout the period:
  - Registration: increased incomplete submissions (15% in June 2010 to 24% in Sep 2011)
  - Issuance: increased inconsistency in submissions (67% in June 2010 to 82% in Sep 2011)
- Composition of reasons for rejection at IRC stage both for registration and issuance submissions do not significantly change throughout one year elapse time, i.e. almost 50% due to issues related to additionality (validation of input values) for Registration, and around 40% due to issues related to calibration and monitoring for Issuance
- CC & IRC check lists have been revised in May 2011 and regular reports on reasons for rejections have been made publicly available in the UNFCCC CDM website since the first reporting



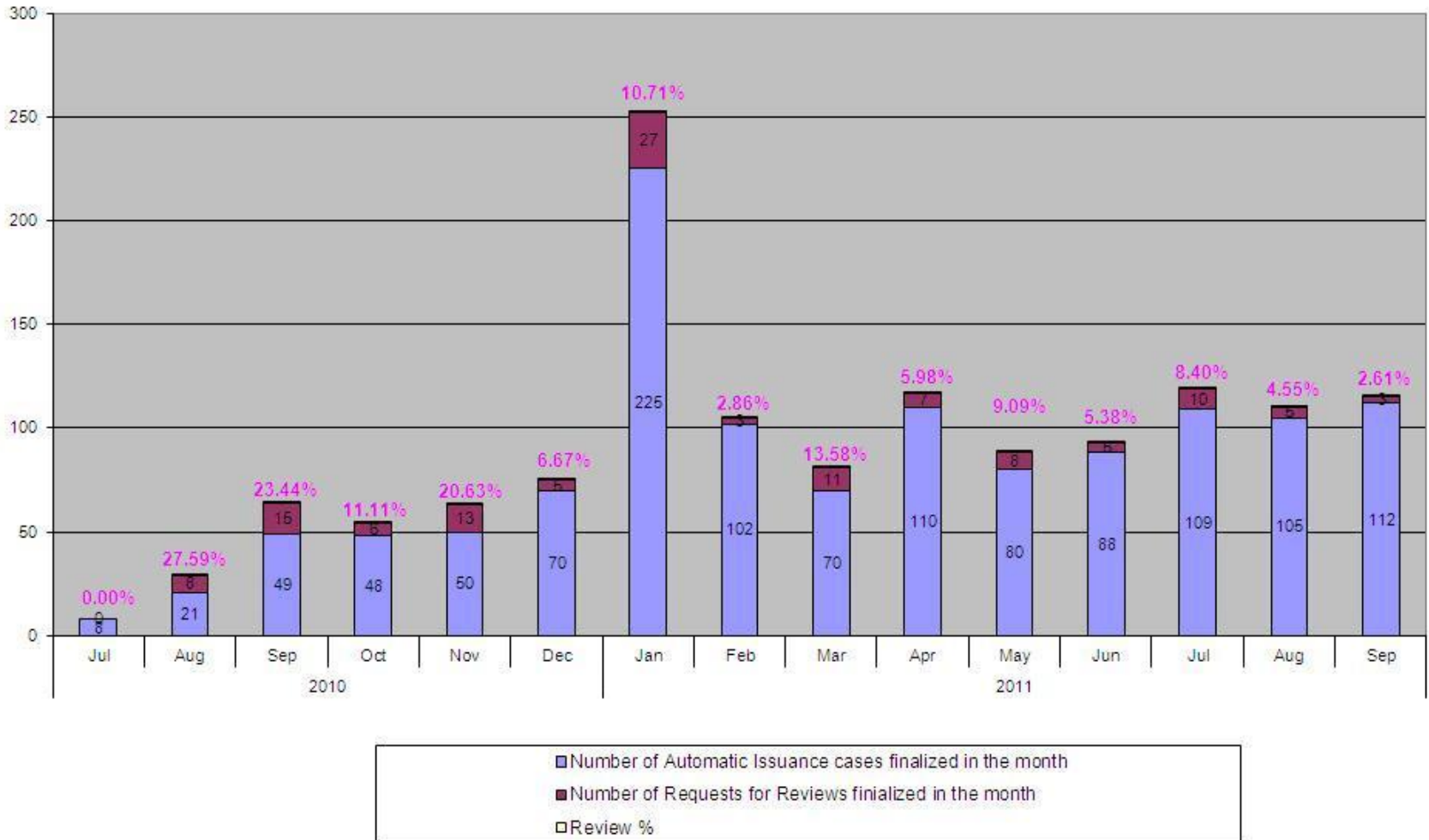
## Implementation of review procedures – summary of timelines



## Implementation of review procedures – Rate of review Registration



## Implementation of review procedures – Rate of review Issuance



## Implementation of review procedures - observed trend

---

- Continuing declining rate of review was observed for Issuance, from average 16.5% in 2010 to 7% by Sept 2011 (8.8% in July 2011)
- Declining rate of review was also observed for Registration, from average 29.7% in 2010 to 21.8% by Sept of 2011 (23 % in July 2011)



## Differing recommendations between secretariat and RIT members

### Registration

EB	Total review cases	Cases in disagreement	% disagreement
59	39	7	18
60	79	33	42
61	43	11	26
62	31	14	45
63	56	21	38
65	31	11	35
As of 015/11/11			
<b>Average</b>			<b>34</b>

### Issuance

EB	Total review cases	Cases in disagreement	% disagreement
59	26	6	23
60	33	9	27
61	15	0	0
62	10	2	20
63	8	2	25
65	15	1	6
As of 015/11/11			
<b>Average</b>			<b>17</b>



---

**THANK YOU!**

