

Agenda item 3 (b)

Switching Tracks in the JI Project Cycle

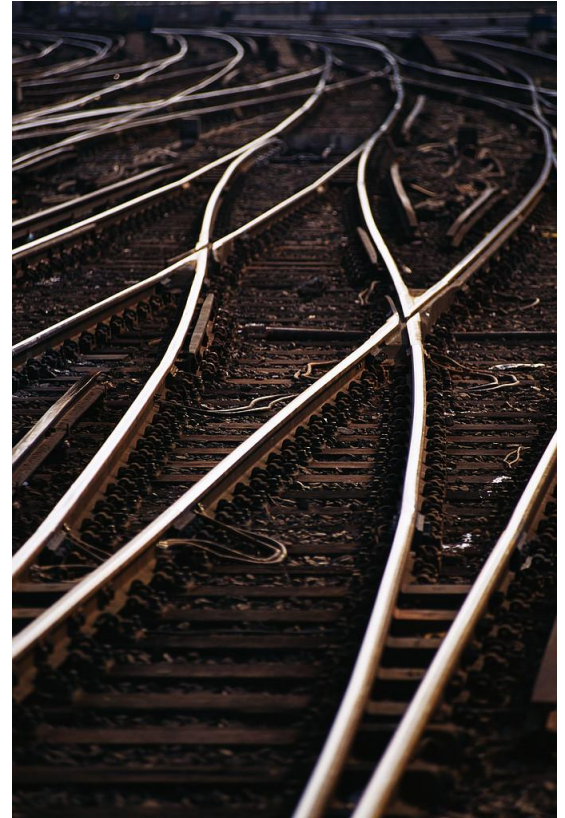
JISC 27

Durban, South Africa 24-25 November 2011



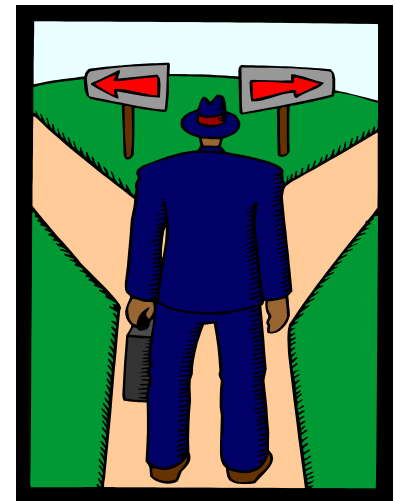
Overview

- **Background**
- **Track 1 vs Track 2 – Eligibility**
- **Track 1 vs Track 2 – Actors Involved**
- **Track 1 & Track 2 – Project Cycle**
- **Switching Tracks – 2 Options**
- **Track 1 → Track 2**
- **Track 2 → Track 1**



Background

- JISC discussed a request for clarification from BVC regarding the **actions for track switching** (from Track 1 to Track 2) under the JI project cycle
- In 2010, a request for clarification on **similar aspects** regarding track switching (from Track 2 to Track 1) was **responded by the secretariat**
- JISC requested the secretariat to make a presentation at JISC 27 **about switching tracks** in order to provide more clarity to all **interested stakeholders**



Track 1 vs. Track 2 – Eligibility

Track 1 (full eligibility)

- Party to the Kyoto Protocol
- Assigned amount calculated
- National registry in place for tracking assigned amount
- National system in place for estimating emissions/removals
- Submission of most recent required emissions inventory
- Accurate accounting of assigned amount and submission of info

Track 2 (partial eligibility)

- Party to the Kyoto Protocol
- Assigned amount calculated
- National registry in place for tracking assigned amount

Guided by the JISC

Managed by the host Party

A project participant may at any time switch tracks



Track 1 vs. Track 2 – Actors Involved

Track 1

- Project Participants
- Independent Entity
- Designated Focal Point
- Secretariat

**Host Party DFP
uploads documents**

Track 2

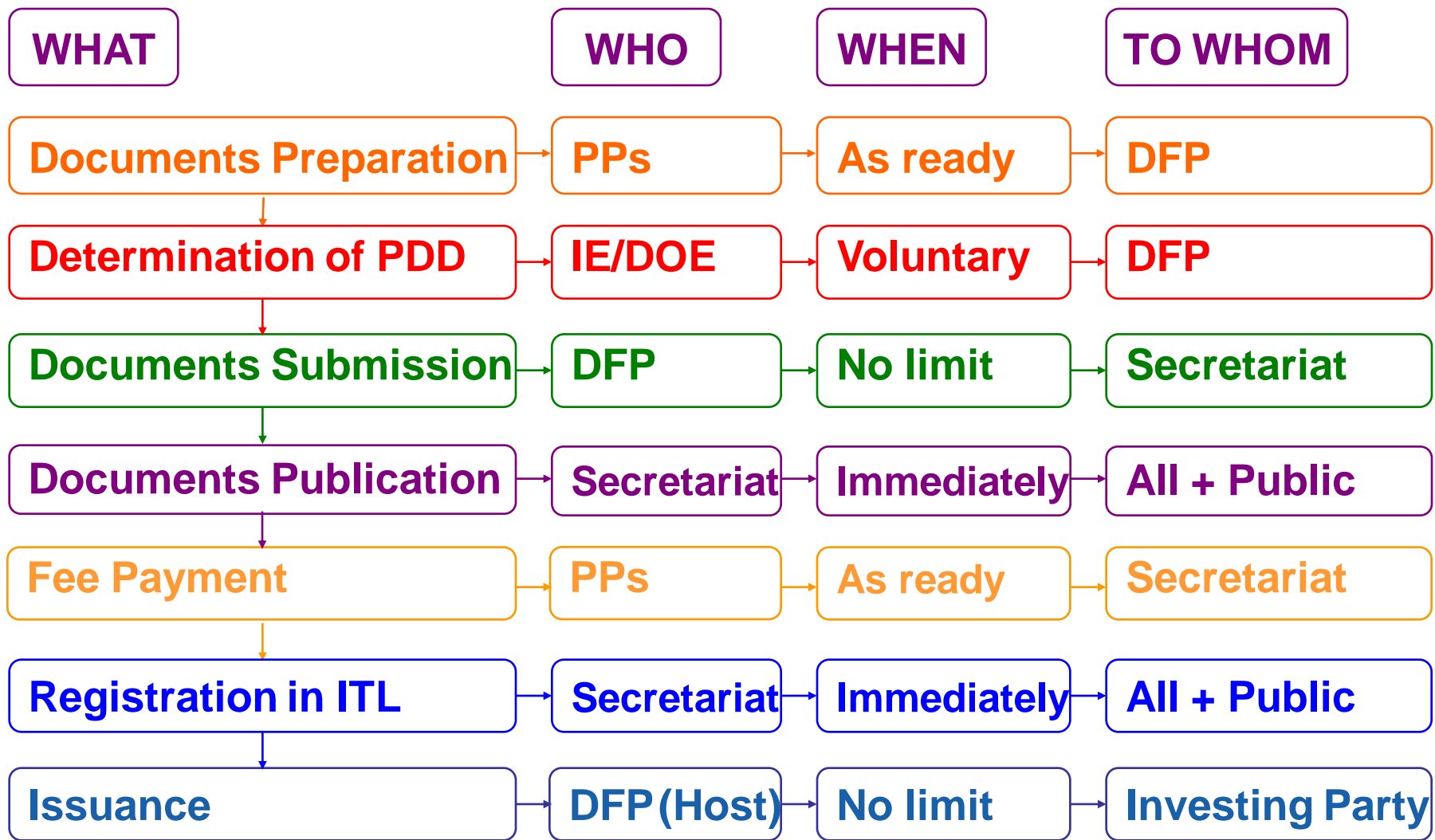
- Project Participants
- Accredited Independent Entity
- Designated Focal Point
- Experts
- JISC
- Secretariat

AIE uploads documents

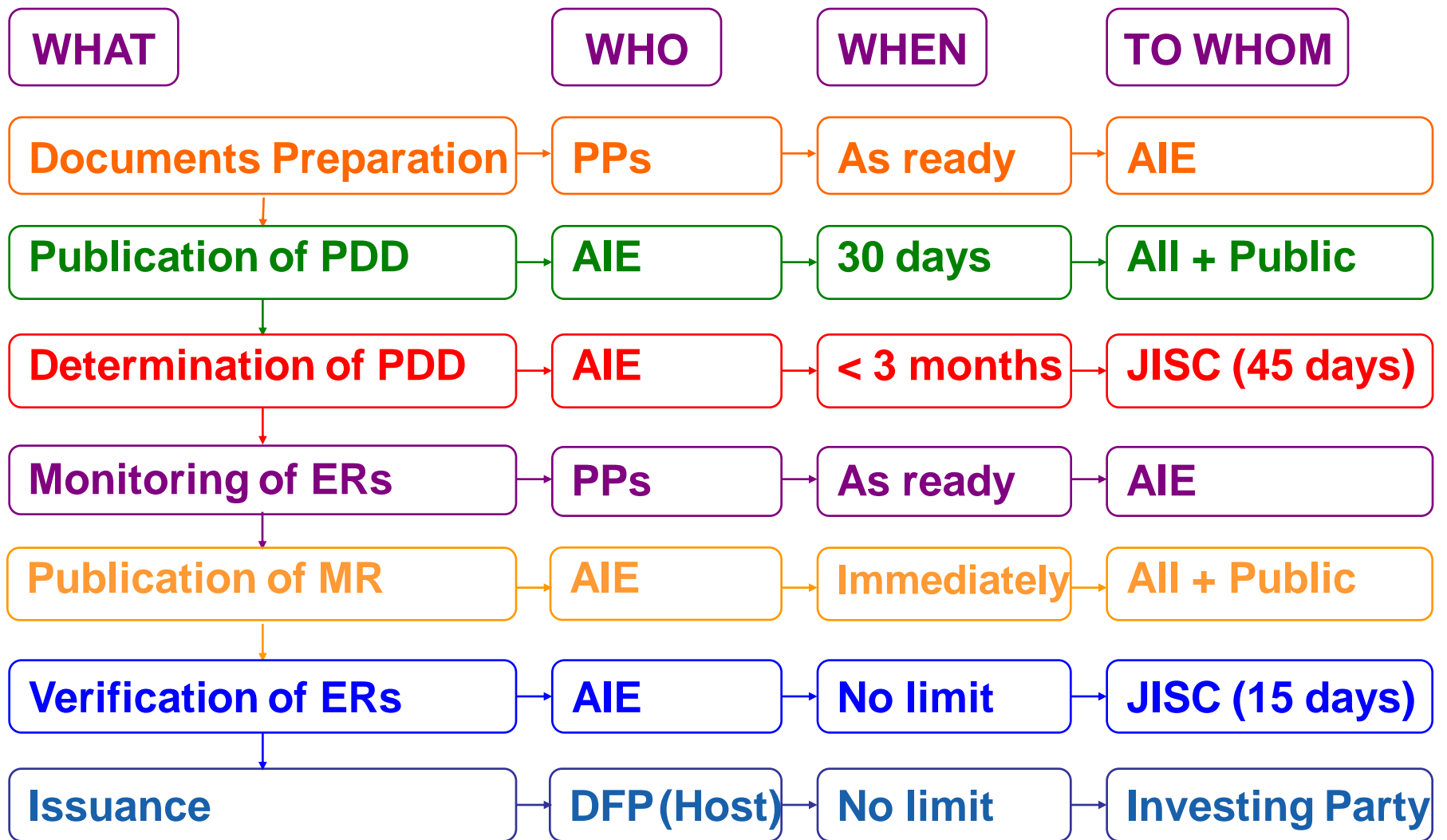
JI Infosystem - workflow



Track 1 Project Cycle



Track 2 Project Cycle



Switching Tracks Options

Track 1



Track 2

Track 1



Track 2



Requirements/Prerequisites:

- Occur only for **registered projects** (under Track 1 or Track 2)
- Projects have **unique registration numbers** (RU10000xx; RU20000xx)
- AIE or DFP **inform the secretariat** when switching
- AIE or DFP include **“Track 1”/“Track 2” in project title** when switching
- AIE or DFP provide **transparent information** on all JI projects



Switch from Track 1 to Track 2

- Project **registered under Track 1 by DFP** (Track 1 ID number reg. in ITL)
- PPs wish to **switch to Track 2**
- All guidelines, guidance, decisions, etc. under Track 2 **observed by all**
- JI Track 2 **project cycle steps** followed:
 - Publishing PDD for 30 days public comments (by AIE)
 - Determination of PDD by AIE
 - Submission of PDD + add. docs. for publishing (by AIE)
 - Payment of advanced fee (PPs)
 - JISC consideration of PDD determination for 45 days (+ possible review)
- PDD determination **deemed final by JISC** (Track 2 ID number reg. in ITL)



Switch from Track 2 to Track 1

- PDD determination **deemed final by JISC** (Track 2 ID number reg. in ITL)
- PPs wish to **switch to Track 1**
- All JI Track 1 related regulations of the host Party **observed by PPs**
- JI Track 1 **project cycle steps** followed:
 - Submitting info & docs. for publishing (by host Party DFP)
 - Publication of info & docs on the website (JI Infosystem)
 - Payment of Track 1 registration fee (PPs)
 - Confirmation of fee payment (secretariat)
- Project **registered under Track 1** (Track 1 ID number reg. in ITL)



Thank you

